

REV	DESCRIPTION	DATE	REV	DESCRIPTION	DATE	REV	DESCRIPTION	DATE
0	Initial Submission	26/09/22	4	Including Minor Ancillary Facility for MSB PC taking over	29/06/2023	8	Update with DPHI & ER Comments	13/09/2024
1	Added Plant Offloading Locations	18/05/23	5	Including Heritage Garden Bed at Wiley Park Station City Side	15/12/2023			
2	General Updates: Plant Parking, Heritage Bridges & Contamination Areas	18/05/23	6	Including TNSW CA56 and Ancillary Facility for SWM3	12/08/2024			
3	Including Station Bracket Scope and possession plant parking at Canterbury	23/06/2023	7	Update for DPHI & ER Comments	29/08/2024			



JOHN  
HOLLAND

SITE OVERVIEW

SWMC  
ENVIRONMENTAL CONTROL MAP

Cover Sheet

A3

CEMF Section 3.5c - ECM Requirement Checklist:	Check	How the CEMF requirement is addressed																																			
i. Is a progressive document depicting a current representation of the site.	<input checked="" type="checkbox"/>	Revision 08 is the base revision that forms Appendix K. The ECM is a live document and will be updated as required. Appendix K will be updated on a 6 monthly basis. The newest revision of the ECM will be available on the project website from the time it is signed off by the Environmental Manager or Delegate.																																			
ii. Indicates which environmental procedures, environmental approvals, or licences are applicable.	<input checked="" type="checkbox"/>	<p>This ECM has been prepared for CSSI 8256, SWM3 Scope of Work. It should be used in conjunction with; 1. The EPL 21147 Premise Map Boundary: <a href="https://sydenhamstationupgrade.com/sydenhamstationupgrade/">https://sydenhamstationupgrade.com/sydenhamstationupgrade/</a></p> <p>2. ERSED Plans prepared for specific work area and specific work scope, including Ancillary Facilities on a risk-based approach.</p> <p>The ECM is used to inform;</p> <div>1. New Area Checklists2. Excavation Permits3. Possession Packs4. Work Packs5. Ancillary Facilities</div>																																			
iii. Illustrates the site showing significant structures, work areas and boundaries.	<input checked="" type="checkbox"/>	<p>The significant structures and boundaries are featured as follows;</p> <div>1. Project Area (Project Boundary)2. Plant Community Types (PCTs) also referred to as Threatened Ecological Communities (TEC)3. Heritage curtilages (captured as highest tier of status per station)4. Heritage conservation areas &amp; structures5. Archaeological Management Zones (AMZs)6. Potential Archaeological Deposits (PADs)7. Plant parking8. Waterways &amp; large culverts (stormwater inlets captured in ERSED Plans)9. EPL Water Discharge Points (Environmental Managers Approval Required)10. Contamination Potential11. Educational/medical/childcare centres and places of worship are differentiated from Residential Sensitive Receivers</div> <p>Note: the above features are generally constant/unchanging. Highly variable features such as ERSED controls, bunds, spill kits, concrete washouts, refuelling areas/bunds, flow lines, stormwater inlets are captured in specific site/activity ERSED Plans.</p>																																			
iv. Illustrates environmental control measures and environmentally sensitive receivers.	<input checked="" type="checkbox"/>	<p>The whole surrounding area of the 14km corridor is considered an environmental sensitive receiver, predominantly residential. Accordingly residential receivers have not been illustrated on the ECM. Environmentally Sensitive receivers such as educational/medical/childcare centres and places of worship have been differentiated from the residential sensitive receivers.</p> <p>ERSED Plans are prepared for specific work area and specific work scope and feature all applicable environmental controls.</p>																																			
v. Is endorsed by the Principal Contractors Environmental Manager or delegate.	<input checked="" type="checkbox"/>	<p>JHLORJV Environmental Manager</p> <table><tr><th colspan="5">Latest Version Signed by Environment Manager and General Superintendent (or delegate)</th></tr><tr><th>Rev No.</th><th>Name</th><th>Date</th><th>Enviro Signature</th><th>Supervisor Signature</th></tr><tr><td>08</td><td>Lucas Dobrolot</td><td>18/09/24</td><td><i>L. Dobrolot</i></td><td></td></tr><tr><td>08</td><td>Cory Gray</td><td>18/09/24</td><td></td><td><i>C. Gray</i></td></tr><tr><td></td><td></td><td></td><td></td><td></td></tr><tr><td></td><td></td><td></td><td></td><td></td></tr><tr><td></td><td></td><td></td><td></td><td></td></tr></table> <p>Rev 08 is the base version in Appendix K of the CEMP</p>	Latest Version Signed by Environment Manager and General Superintendent (or delegate)					Rev No.	Name	Date	Enviro Signature	Supervisor Signature	08	Lucas Dobrolot	18/09/24	<i>L. Dobrolot</i>		08	Cory Gray	18/09/24		<i>C. Gray</i>															
Latest Version Signed by Environment Manager and General Superintendent (or delegate)																																					
Rev No.	Name	Date	Enviro Signature	Supervisor Signature																																	
08	Lucas Dobrolot	18/09/24	<i>L. Dobrolot</i>																																		
08	Cory Gray	18/09/24		<i>C. Gray</i>																																	
vi. Relevant workers will be trained in the requirements of and will sign off the procedures prior to commencing works on the specific site and / or activity.	<input checked="" type="checkbox"/>	<p>The ECM is a practical working document used and referred to in the following procedures prior to commencing works on specific site locations and activities;</p> <div><ul style="list-style-type: none"><li>Daily Prestart (all workers)</li><li>Each worksite has a Daily STARRT Card identifying environmental controls/risks/mitigations</li><li>Possession/Work Pack</li><li>Excavation Permits</li><li>Ancillary Facility Checklists</li></ul></div> <p>Each of the above procedures are signed off by the relevant workers</p>																																			

Notes applicable to all areas:

- 1. Report any visual or olfactory (smells) signs of contamination – stop works in immediate vicinity if contamination is suspected
- 2. Report any unexpected heritage finds – know the limits of the AMZ; particularly at the following stations
  - a. Marrickville
  - b. Canterbury
  - c. Belmore
  - d. Lakemba
- 3. Avoid areas that are **Threatened Ecological Communities** TEC (including overhang branch & roots damage). No-go zones to be setup at per notes in this plan
- 4. **ATF panels are to be installed around tree drip line as a tree protection zone (TPZ). DO NOT Park plant, equipment & materials under tree drip lines.**
- 5. Ensure any erosion and sediment controls are installed as per the relevant ERSED Plan/Spot location
- 6. Use a watercart to suppress dust as required
- 7. Call street sweeper as required
- 8. Ensure a spill kit is available at each work front
- 9. Be aware of the ‘close’ proximity of residents to work areas
- 10. Project Boundary is the limit of construction activities
- 11. Plant offloading outside the site boundary are limited to areas shown (short durations prior to and after possessions).
- 12. Possession plant parking for Canterbury Compound is shown in **Appendix 1**

Hours of Operation:

Unless permitted by Project Environment Manager, construction works and activities must:

- (a) only be undertaken between the hours of 0700 and 1800 Monday to Friday; and
- (b) only be undertaken between the hours of 0800 and 1800 Saturday; and
- (c) not be undertaken on Sundays or Public Holidays.

Station Bracket scope includes installation of bracket to station structures at the following stations:

- Marrickville Station - Dulwich Hill Station - Hurlstone Station
- Canterbury Station - Belmore Station - Lakemba Station
- Wiley Park Station - Campsie Station - Punchbowl Station

The design of the station brackets was prepared by DesignInc specifically to minimise any impacts upon the significant heritage fabric of the railway station buildings. In the context of the overall works, the brackets will have no physical impact and a negligible visual impact upon the railway station buildings.

The station bracket impact has been assessed in a Memorandum (Appendix F of the SWMC Construction Heritage Management Plan) which provided by Sydney Metro.

REV	DESCRIPTION	DATE	RE V	DESCRIPTION	DATE	RE V	DESCRIPTION	DATE
0	Initial Submission	26/09/22	4	Including Minor Ancillary Facility for MSB PC taking over	29/06/2023	8	Update with DPHI & ER Comments	13/09/2024
1	Added Plant Offloading Locations	18/05/23	5	Including Heritage Garden Bed at Wiley Park Station City Side	15/12/2023			
2	General Updates: Plant Parking, Heritage Bridges & Contamination Areas	18/05/23	6	Including TNSW CAS6 and Ancillary Facility for SWM3	12/08/2024			
3	Including Station Bracket Scope and possession plant parking at Canterbury	23/06/2023	7	Update for DPHI & ER Comments	29/08/2024			





SITE OVERVIEW

SWMC  
ENVIRONMENTAL CONTROL MAP

Cover SheetA3



# LEGEND

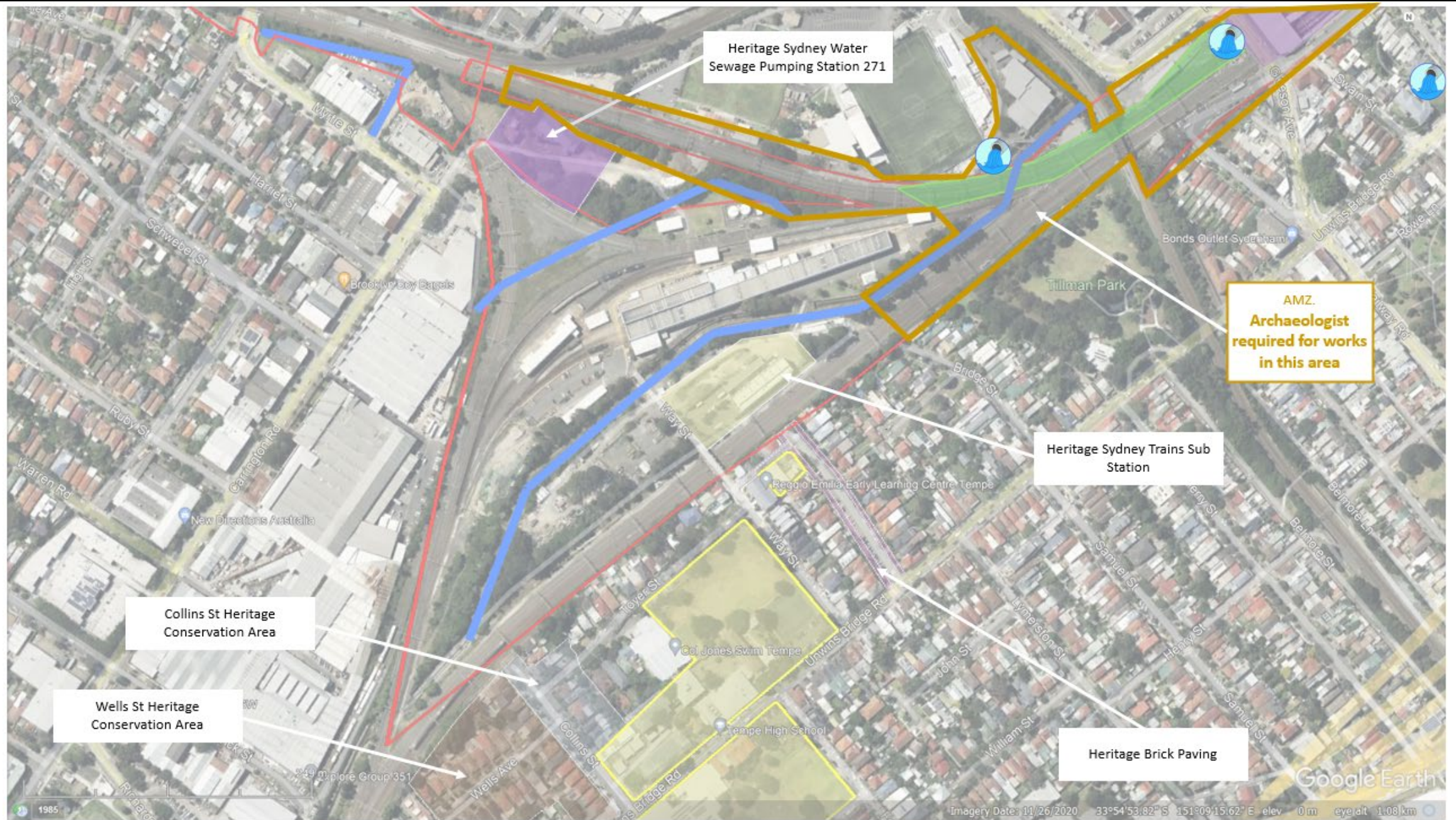
<span style="color: red;">—</span> Project Boundary	<span style="color: red;">■</span> Medical Centre	<span style="color: orange;">P</span> Plant Parking Offload	<span style="color: blue;">☀</span> Access point - monitor for mud track
<span style="color: blue;">→</span> Open Channel	<span style="color: yellow;">■</span> Child Care Centre	<span style="color: orange;">AMZ</span> Archaeological Management Zone	<span style="color: blue;">⊙</span> EPL Water discharge point
<span style="color: brown;">■</span> Education Centre	<span style="color: green;">■</span> Place of Worship	<span style="color: green;">🌱</span> Threatened Ecological Community	<span style="color: blue;">🚰</span> Spill kit & chemical storage area

REV.	DESCRIPTION	DATE
6	Including TNSW CA56 and AF for SWM3	15/12/23
7	Update for DPHI & ER comments	29/08/24
8	Updated as per DPHI & ER comments	13/09/24



**JOHN HOLLAND**

ILLAWARRA & VICTORIA ROAD  
SWMC  
ENVIRONMENTAL CONTROL MAP



# LEGEND

<span style="color: red;">—</span> Project Boundary	<span style="background-color: red; color: white;">P</span> Medical Centre	<span style="background-color: yellow; border: 1px solid black;">P</span> Plant Parking Offload
<span style="color: blue;">—</span> Open Channel	<span style="background-color: purple; color: white;">AMZ</span> Child Care Centre	<span style="background-color: yellow; border: 1px solid black;">AMZ</span> Archaeological Management Zone
<span style="background-color: yellow; border: 1px solid black;">—</span> Education Centre	<span style="background-color: green; color: white;">—</span> Place of Worship	<span style="background-color: green; color: white;">—</span> Threatened Ecological Community

<span style="color: blue;">—</span> Access point - monitor for mud track
<span style="color: blue;">—</span> EPL Water discharge point
<span style="color: blue;">—</span> Spill kit & chemical storage area

REV.	DESCRIPTION	DATE
6	Including TNSW CA56 and AF for SWM3	15/12/23
7	Update for DPHI & ER comments	29/08/24
8	Updated as per DPHI & ER comments	13/09/24

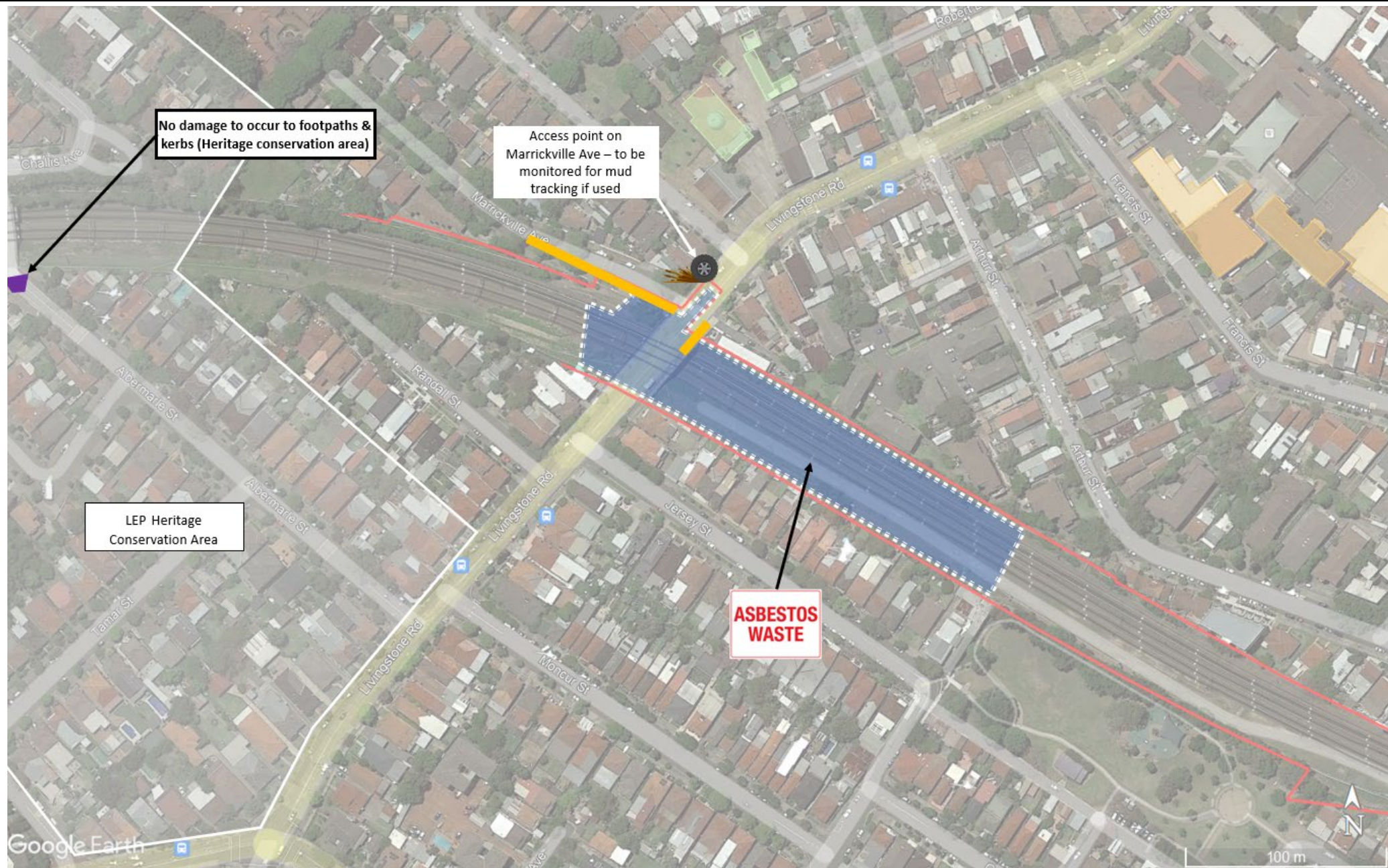




LEGEND

- Project Boundary
- Medical Centre
- Open Channel
- Education Centre
- Plant Parking Offload
- Archaeological Management Zone
- Place of Worship
- Threatened Ecological Community
- Access point - monitor for mud track
- EPL Water discharge point
- Spill kit & chemical storage area

REV.	DESCRIPTION	DATE
6	Including TNSW CA56 and AF for SWM3	15/12/23
7	Update for DPHI & ER comments	29/08/24
8	Updated as per DPHI & ER comments	13/09/24



# LEGEND

<span style="color: red;">—</span> Project Boundary	<span style="background-color: red; color: white;">P</span> Medical Centre	<span style="background-color: yellow; border: 1px solid black;">AM2</span> Plant Parking Offload
<span style="color: blue;">→</span> Open Channel	<span style="background-color: purple; color: white;">P</span> Child Care Centre	<span style="background-color: yellow; border: 1px solid black;">AM2</span> Archaeological Management Zone
<span style="background-color: orange; color: white;">P</span> Education Centre	<span style="background-color: green; color: white;">P</span> Place of Worship	<span style="background-color: green; color: white;">P</span> Threatened Ecological Community

<span style="color: blue;">P</span> Access point - monitor for mud track
<span style="color: blue;">P</span> EPL Water discharge point
<span style="color: blue;">P</span> Spill kit & chemical storage area

REV.	DESCRIPTION	DATE
6	Including TINSW CA56 and AF for SWM3	15/12/23
7	Update for DPHI & ER comments	29/08/24
8	Updated as per DPHI & ER comments	13/09/24



**JOHN HOLLAND**

LIVINGSTONE ROAD BRIDGE  
SWMC  
ENVIRONMENTAL CONTROL MAP



LEGEND

- Project Boundary
- Open Channel
- Education Centre
- Medical Centre
- Child Care Centre
- Place of Worship
- Plant Parking Offload
- Archaeological Management Zone
- Threatened Ecological Community
- Access point - monitor for mud track
- EPL Water discharge point
- Spill kit & chemical storage area

REV.	DESCRIPTION	DATE
6	Including TINSW CA56 and AF for SWM3	15/12/23
7	Update for DPHI & ER comments	29/08/24
8	Updated as per DPHI & ER comments	13/09/24



Sandstone edging to be protected during construction



LEGEND

- Project Boundary
- Open Channel
- Education Centre
- Medical Centre
- Child Care Centre
- Place of Worship
- Plant Parking Offload
- Archaeological Management Zone
- Threatened Ecological Community
- Access point - monitor for mud track
- EPL Water discharge point
- Spill kit & chemical storage area

REV.	DESCRIPTION	DATE
6	Including TNSW CA56 and AF for SWM3	15/12/23
7	Update for DPHI & ER comments	29/08/24
8	Updated as per DPHI & ER comments	13/09/24





#### LEGEND

	Project Boundary		Medical Centre		Plant Parking Offload		Archaeological Management Zone		Access point - monitor for mud track
	Open Channel		Child Care Centre		EPL Water discharge point		Threatened Ecological Community		Spill kit & chemical storage area
	Education Centre		Place of Worship						

REV.	DESCRIPTION	DATE
6	Including TINSW CA56 and AF for SWM3	15/12/23
7	Update for DPHI & ER comments	29/08/24
8	Updated as per DPHI & ER comments	13/09/24





#### LEGEND

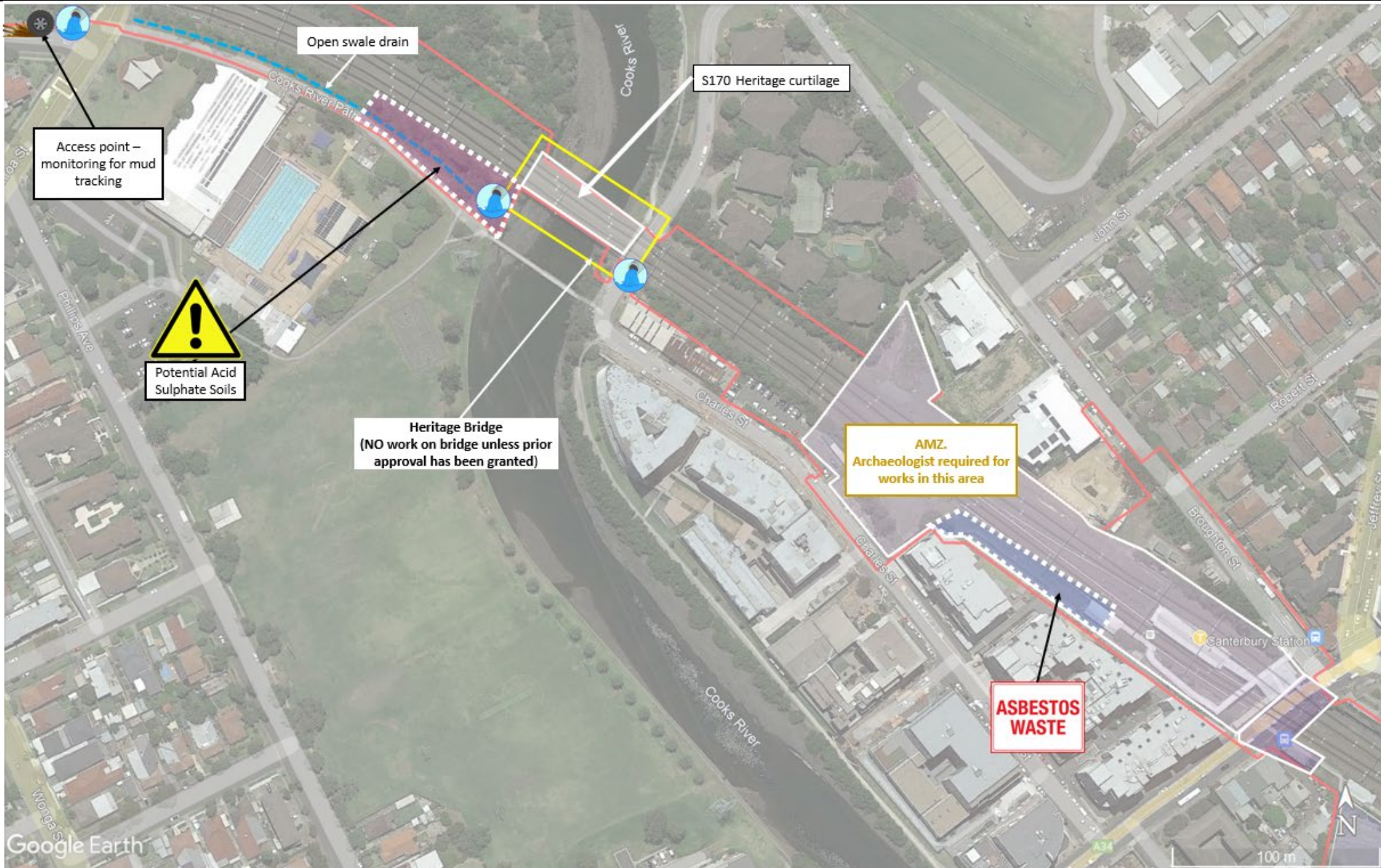
	Project Boundary		Medical Centre		Plant Parking Offload
	Open Channel		Child Care Centre		Archaeological Management Zone
	Education Centre		Place of Worship		Threatened Ecological Community
					Access point - monitor for mud track
					EPL Water discharge point
					Spill kit & chemical storage area

REV.	DESCRIPTION	DATE
6	Including TINSW CA56 and AF for SWM3	15/12/23
7	Update for DPHI & ER comments	29/08/24
8	Updated as per DPHI & ER comments	13/09/24

LAING O'ROURKE

JOHN HOLLAND

MELFORD ST & CHURCH ST  
CANTERBURY COMPOUND - SWMC  
ENVIRONMENTAL CONTROL MAP



# LEGEND

<span style="color: red;">—</span> Project Boundary	<span style="color: red;">■</span> Medical Centre	<span style="color: yellow;">P</span> Plant Parking Offload	<span style="color: blue;">★</span> Access point - monitor for mud track
<span style="color: blue;">- - -</span> Open Channel	<span style="color: purple;">■</span> Child Care Centre	<span style="color: yellow;">AMZ</span> Archaeological Management Zone	<span style="color: blue;">●</span> EPL Water discharge point
<span style="color: brown;">■</span> Education Centre	<span style="color: green;">■</span> Place of Worship	<span style="color: green;">🌱</span> Threatened Ecological Community	<span style="color: yellow;">🧰</span> Spill kit & chemical storage area

REV.	DESCRIPTION	DATE
6	Including TNSW CA56 and AF for SWM3	15/12/23
7	Update for DPHI & ER comments	29/08/24
8	Updated as per DPHI & ER comments	13/09/24



**JOHN  
HOLLAND**

CANTERBURY STATION & COOKS RIVER  
CANTERBURY - SWMC  
ENVIRONMENTAL CONTROL MAP



LEGEND

- Project Boundary
- Open Channel
- Education Centre
- Medical Centre
- Child Care Centre
- Place of Worship
- Plant Parking Offload
- Archaeological Management Zone
- Threatened Ecological Community
- Access point - monitor for mud track
- EPL Water discharge point
- Spill kit & chemical storage area

REV.	DESCRIPTION	DATE
6	Including TNSW CA56 and AF for SWM3	15/12/23
7	Update for DPHI & ER comments	29/08/24
8	Updated as per DPHI & ER comments	13/09/24

LAING O'ROURKE

JOHN HOLLAND



LEGEND

- Project Boundary
- Open Channel
- Education Centre
- Medical Centre
- Child Care Centre
- Place of Worship
- Plant Parking Offload
- Archaeological Management Zone
- Threatened Ecological Community
- Access point - monitor for mud track
- EPL Water discharge point
- Spill kit & chemical storage area

REV.	DESCRIPTION	DATE
6	Including TNSW CA56 and AF for SWM3	15/12/23
7	Update for DPHI & ER comments	29/08/24
8	Updated as per DPHI & ER comments	13/09/24



# LEGEND

<span style="color: red;">—</span> Project Boundary	<span style="background-color: red; color: white;"> </span> Medical Centre	<span style="background-color: yellow; border: 1px solid black; border-radius: 50%; padding: 2px;">P</span> Plant Parking Offload	<span style="background-color: yellow; border: 1px solid black; border-radius: 50%; padding: 2px;">AM2</span> Archaeological Management Zone	<span style="color: blue;">—</span> Open Channel	<span style="background-color: purple; color: white;"> </span> Child Care Centre	<span style="color: blue;">●</span> Access point - monitor for mud track	<span style="color: blue;">●</span> EPL Water discharge point
<span style="background-color: yellow;"> </span> Education Centre	<span style="background-color: green; color: white;"> </span> Place of Worship	<span style="color: green;">—</span> Threatened Ecological Community	<span style="color: green;">●</span> Spill kit & chemical storage area				

REV.	DESCRIPTION	DATE
6	Including TNSW CA56 and AF for SWM3	15/12/23
7	Update for DPHI & ER comments	29/08/24
8	Updated as per DPHI & ER comments	13/09/24



**JOHN  
HOLLAND**

LOCH ST & BELMORET  
CAMPSIE - SWMC  
ENVIRONMENTAL CONTROL MAP





LEGEND

- Project Boundary

Open Channel

Education Centre

Medical Centre

Child Care Centre

Place of Worship

Plant Parking Offload

Archaeological Management Zone

Threatened Ecological Community

Access point - monitor for mud track

EPL Water discharge point

Spill kit & chemical storage area
- | REV. | DESCRIPTION                         | DATE     |
|------|-------------------------------------|----------|
| 6    | Including TNSW CA56 and AF for SWM3 | 15/12/23 |
| 7    | Update for DPHI & ER comments       | 29/08/24 |
| 8    | Updated as per DPHI & ER comments   | 13/09/24 |
- LAING O'ROURKE

JOHN HOLLAND
- BELMORE STATION  
BELMORE - SWMC  
ENVIRONMENTAL CONTROL MAP

Page 14 of 23

A3



LEGEND

- Project Boundary
- Open Channel
- Education Centre
- Medical Centre
- Child Care Centre
- Place of Worship
- Plant Parking Offload
- Archaeological Management Zone
- Threatened Ecological Community
- Access point - monitor for mud track
- EPL Water discharge point
- Spill kit & chemical storage area

REV.	DESCRIPTION	DATE
6	Including TNSW CA56 and AF for SWM3	15/12/23
7	Update for DPHI & ER comments	29/08/24
8	Updated as per DPHI & ER comments	13/09/24

LAING O'ROURKE

JOHN HOLLAND



Sandstone edging to be removed, stored and relocated in the same area as part landscape design.



LEGEND

- Project Boundary
- Open Channel
- Education Centre
- Medical Centre
- Child Care Centre
- Place of Worship
- Plant Parking Offload
- Archaeological Management Zone
- Threatened Ecological Community
- Access point - monitor for mud track
- EPL Water discharge point
- Spill kit & chemical storage area

REV.	DESCRIPTION	DATE
6	Including TNSW CA56 and AF for SWM3	15/12/23
7	Update for DPHI & ER comments	29/08/24
8	Updated as per DPHI & ER comments	13/09/24

LAING O'ROURKE

JOHN HOLLAND



# LEGEND

<span style="color: red;">—</span> Project Boundary	<span style="background-color: red; color: white;">P</span> Medical Centre	<span style="background-color: yellow; border: 1px solid black;">P</span> Plant Parking Offload
<span style="color: blue;">—</span> Open Channel	<span style="background-color: purple; color: white;">AM2</span> Child Care Centre	<span style="background-color: yellow; border: 1px solid black;">AM2</span> Archaeological Management Zone
<span style="background-color: orange; color: black;">—</span> Education Centre	<span style="background-color: green; color: white;">P</span> Place of Worship	<span style="background-color: yellow; border: 1px solid black;">P</span> Threatened Ecological Community

<span style="color: blue;">P</span> Access point - monitor for mud track
<span style="color: blue;">P</span> EPL Water discharge point
<span style="color: blue;">P</span> Spill kit & chemical storage area

REV.	DESCRIPTION	DATE
6	Including TINSW CA56 and AF for SWM3	15/12/23
7	Update for DPHI & ER comments	29/08/24
8	Updated as per DPHI & ER comments	13/09/24



**JOHN HOLLAND**

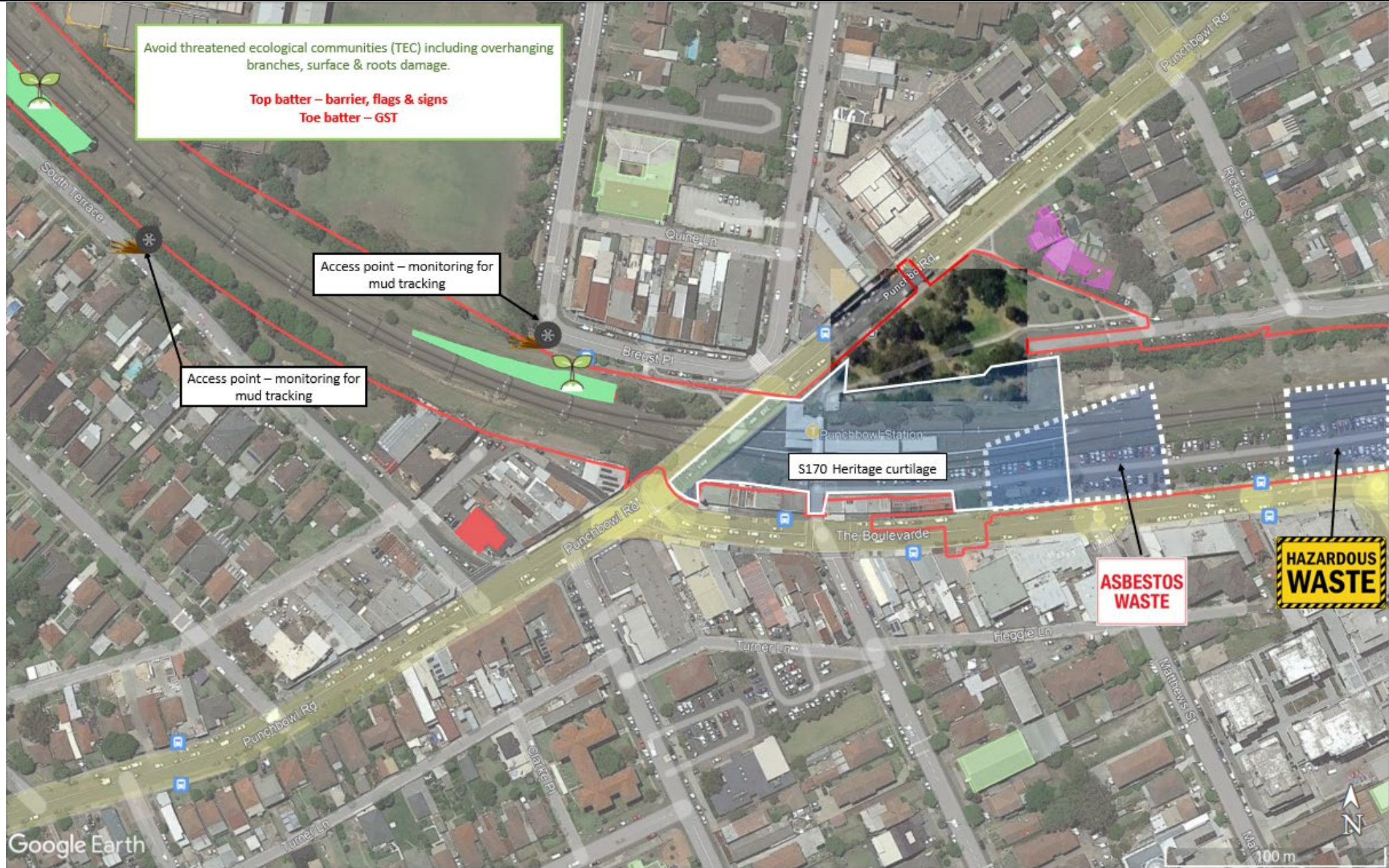
WILEY PARK STATION  
WILEY PARK - SWMC  
ENVIRONMENTAL CONTROL MAP



LEGEND

- Project Boundary
- Open Channel
- Medical Centre
- Child Care Centre
- Education Centre
- Place of Worship
- Plant Parking Offload
- Archaeological Management Zone
- Threatened Ecological Community
- Access point - monitor for mud track
- EPL Water discharge point
- Spill kit & chemical storage area

REV.	DESCRIPTION	DATE
6	Including TNSW CA56 and AF for SWM3	15/12/23
7	Update for DPHI & ER comments	29/08/24
8	Updated as per DPHI & ER comments	13/09/24



Avoid threatened ecological communities (TEC) including overhanging branches, surface & roots damage.

**Top batter – barrier, flags & signs**  
**Toe batter – GST**

Access point – monitoring for mud tracking

Access point – monitoring for mud tracking

S170 Heritage curtilage

ASBESTOS WASTE

HAZARDOUS WASTE

#### LEGEND

- Project Boundary
- Medical Centre
- Child Care Centre
- Place of Worship
- Plant Parking Offload
- Archaeological Management Zone
- Threatened Ecological Community
- Access point - monitor for mud track
- EPL Water discharge point
- Spill kit & chemical storage area

REV.	DESCRIPTION	DATE
6	Including TINSW CA56 and AF for SWM3	15/12/23
7	Update for DPHI & ER comments	29/08/24
8	Updated as per DPHI & ER comments	13/09/24





# LEGEND

	Project Boundary		Medical Centre		Plant Parking Offload		Access point - monitor for mud track
	Open Channel		Child Care Centre		Archaeological Management Zone		EPL Water discharge point
	Education Centre		Place of Worship		Threatened Ecological Community		Spill kit & chemical storage area

REV.	DESCRIPTION	DATE
6	Including TNSW CA56 and AF for SWM3	15/12/23
7	Update for DPHI & ER comments	29/08/24
8	Updated as per DPHI & ER comments	13/09/24





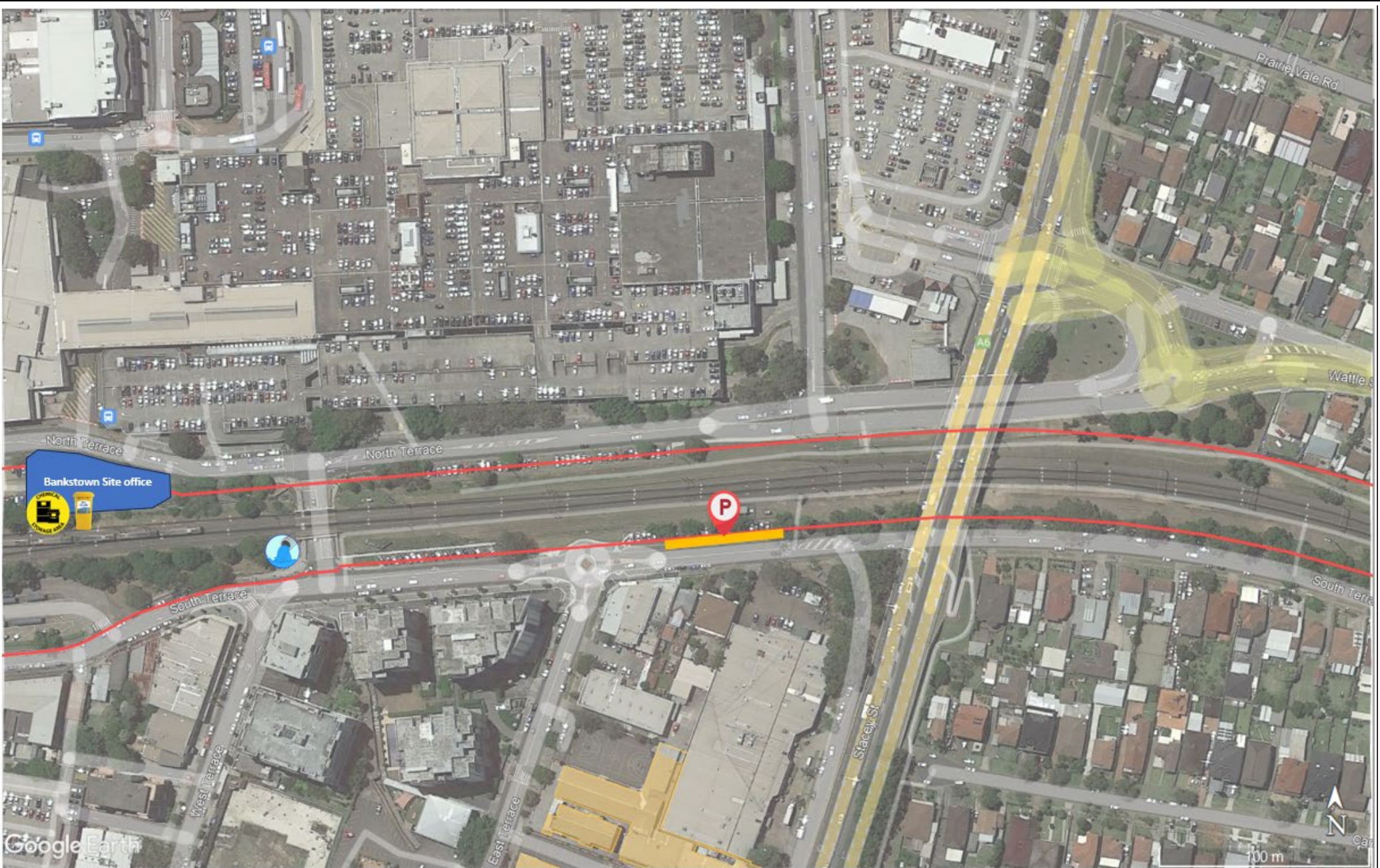
# LEGEND

<span style="color: red;">—</span> Project Boundary	<span style="background-color: red; color: white;">P</span> Medical Centre	<span style="background-color: yellow; border: 1px solid black;">P</span> Plant Parking Offload
<span style="color: blue;">→</span> Open Channel	<span style="background-color: purple; color: white;">AM2</span> Child Care Centre	<span style="background-color: yellow; border: 1px solid black;">AM2</span> Archaeological Management Zone
<span style="background-color: brown; color: white;">■</span> Education Centre	<span style="background-color: green; color: white;">■</span> Place of Worship	<span style="background-color: green; color: white;">■</span> Threatened Ecological Community

<span style="color: blue;">●</span> Access point - monitor for mud track
<span style="color: blue;">●</span> EPL Water discharge point
<span style="background-color: yellow; border: 1px solid black;">■</span> Spill kit & chemical storage area

REV.	DESCRIPTION	DATE
6	Including TNSW CA56 and AF for SWM3	15/12/23
7	Update for DPHI & ER comments	29/08/24
8	Updated as per DPHI & ER comments	13/09/24





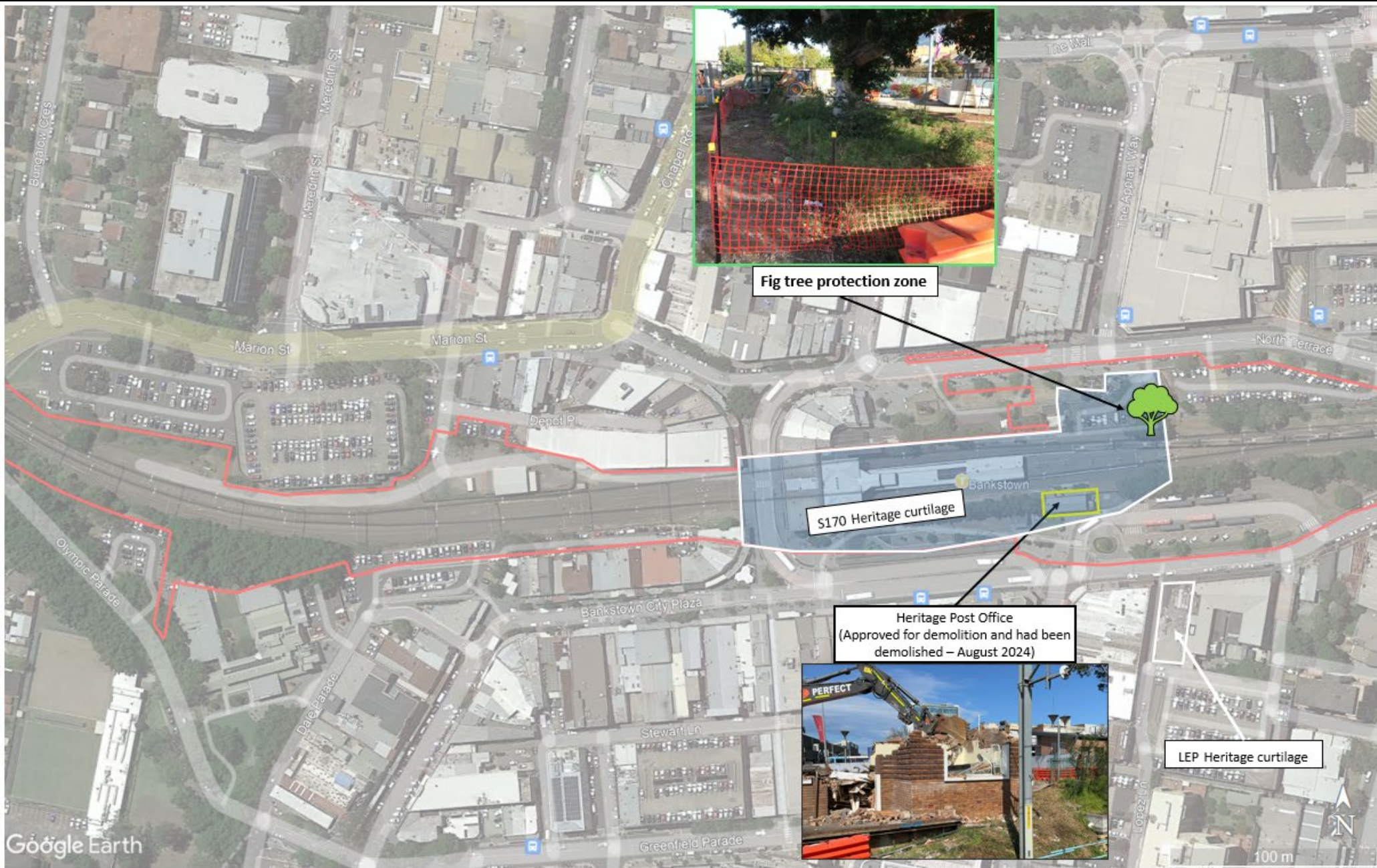
LEGEND

- Project Boundary
- Open Channel
- Education Centre
- Medical Centre
- Child Care Centre
- Place of Worship
- Plant Parking Offload
- Archaeological Management Zone
- Threatened Ecological Community
- Access point - monitor for mud track
- EPL Water discharge point
- Spill kit & chemical storage area

REV.	DESCRIPTION	DATE
6	Including TNSW CA56 and AF for SWM3	15/12/23
7	Update for DPHI & ER comments	29/08/24
8	Updated as per DPHI & ER comments	13/09/24

LAING O'ROURKE

JOHN HOLLAND



LEGEND

- Project Boundary

Open Channel

Education Centre

Medical Centre

Child Care Centre

Place of Worship

P

Plant Parking Offload

AM2

Archaeological Management Zone

Threatened Ecological Community

Access point - monitor for mud track

EPL Water discharge point

Spill kit & chemical storage area
- | REV. | DESCRIPTION                          | DATE     |
|------|--------------------------------------|----------|
| 6    | Including TINSW CA56 and AF for SWM3 | 15/12/23 |
| 7    | Update for DPHI & ER comments        | 29/08/24 |
| 8    | Updated as per DPHI & ER comments    | 13/09/24 |
- LAING O'ROURKE

JOHN HOLLAND
- BANKSTOWN STATION

BANKSTOWN - SWMC

ENVIRONMENTAL CONTROL MAP


Page 23 of 23


A3

# APPENDIX 1

## Possession plant parking for Canterbury Compound

REV	DESCRIPTION	DATE	RE V	DESCRIPTION	DATE	RE V	DESCRIPTION	DATE
0	Initial Submission	26/09/22	4	Including Minor Ancillary Facility for MSB PC taking over	29/06/2023	8	Update with DPHI & ER Comments	13/09/2024
1	Added Plant Offloading Locations	18/05/23	5	Including Heritage Garden Bed at Wiley Park Station City Side	15/12/2023			
2	General Updates: Plant Parking, Heritage Bridges & Contamination Areas	18/05/23	6	Including TNSW CAS6 and Ancillary Facility for SWM3	12/08/2024			
3	Including Station Bracket Scope and possession plant parking at Canterbury	23/06/2023	7	Update for DPHI & ER Comments	29/08/2024			





SWMC

ENVIRONMENTAL CONTROL MAP

Cover Sheet

A3



#### LEGEND

- |   |                        |   |                              |
|---|------------------------|---|------------------------------|
|  | Project Boundary       |  | Plant Exiting Route          |
|  | Plant Parking Location |  | Pedestrian Route to Compound |



**JOHN HOLLAND**

#### Appendix 1 – Possession Plant Parking



Canterbury - SWMC  
ENVIRONMENTAL CONTROL MAP

# APPENDIX 2

## SWM3 MAF

Ancillary Facility	Status	Ancillary Facility	Status
A16 Sydney Steel Road Laydown	EIS Approved (TfNSW CA56)	A16 Campsie Station Ancillary Facility	EIS Approved (Indicative construction compound C9)
A16 Murray Road Laydown	EIS Approved (TfNSW CA56)	A16 Belmore Station Ancillary Facility	EIS Approved (Indicative construction compound C10)
A19 Way Street Substation Ancillary Facility and Laydown	Proposed to demob from October 2024 (TfNSW CA56)	A16 Belmore Bridge Road Ancillary Facility	EIS Approved (Indicative construction compound C13)
A19 Marrickville Station Ancillary Facility	Proposed to demob from August 2025	A16 Lakemba Station Ancillary Facility	EIS Approved (Indicative construction compound C16)
A19 Dulwich Hill Station Ancillary Facility	Proposed to demob from August 2025	A16 Wiley Park Station Ancillary Facility	EIS Approved (Indicative construction compound C17)
A16 Hurlstone Park Station Ancillary Facility	EIS Approved (Indicative construction compound C4)	A19 Punchbowl Station Ancillary Facility	Proposed to demob from August 2025
A16 Canterbury Station Ancillary Facility	EIS Approved (Indicative construction compound C6)		

REV	DESCRIPTION	DATE	REV	DESCRIPTION	DATE	REV	DESCRIPTION	DATE
0	Initial Submission	26/09/22	4	Including Minor Ancillary Facility for MSB PC taking over	29/06/2023	8	Update with DPHI & ER Comments	13/09/2024
1	Added Plant Offloading Locations	18/05/23	5	Including Heritage Garden Bed at Wiley Park Station City Side	15/12/2023			
2	General Updates: Plant Parking, Heritage Bridges & Contamination Areas	18/05/23	6	Including TfNSW CA56 and Ancillary Facility for SWM3	12/08/2024			
3	Including Station Bracket Scope and possession plant parking at Canterbury	23/06/2023	7	Update for DPHI & ER Comments	29/08/2024			

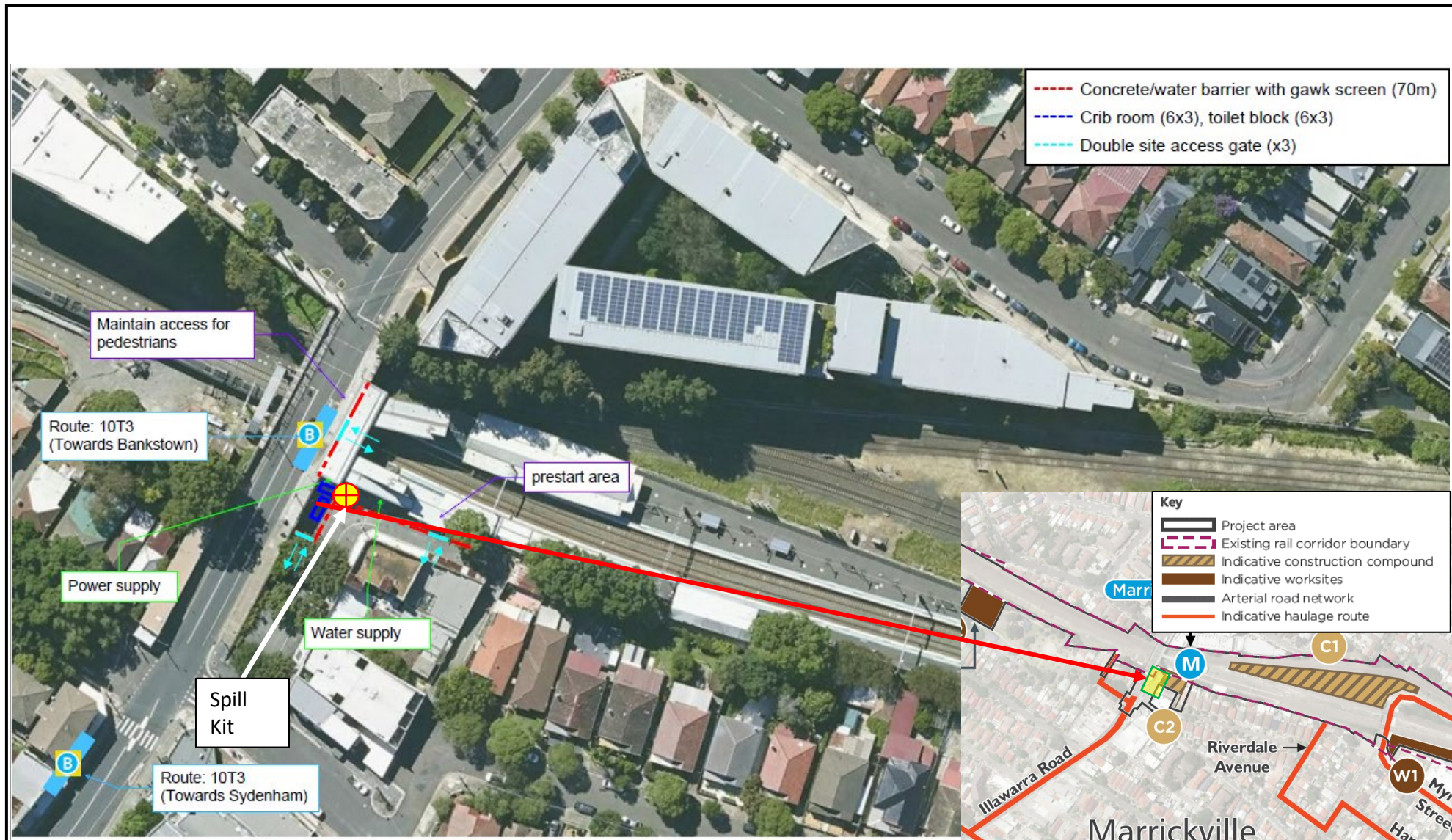


SWMC

ENVIRONMENTAL CONTROL MAP

Cover Sheet

A3



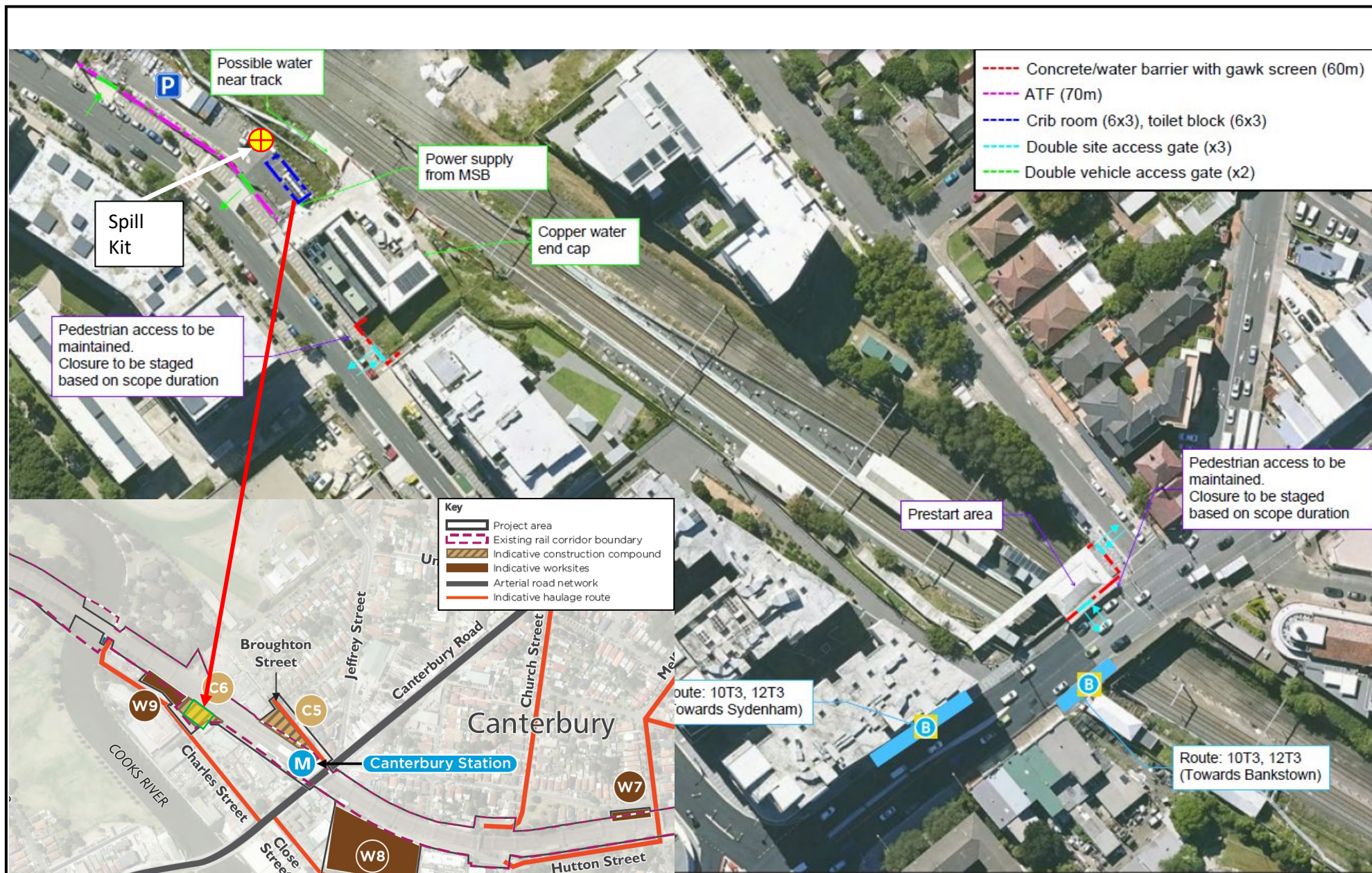
A19 Facility  
Refer to Marrickville Station Ancillary Facility Checklist



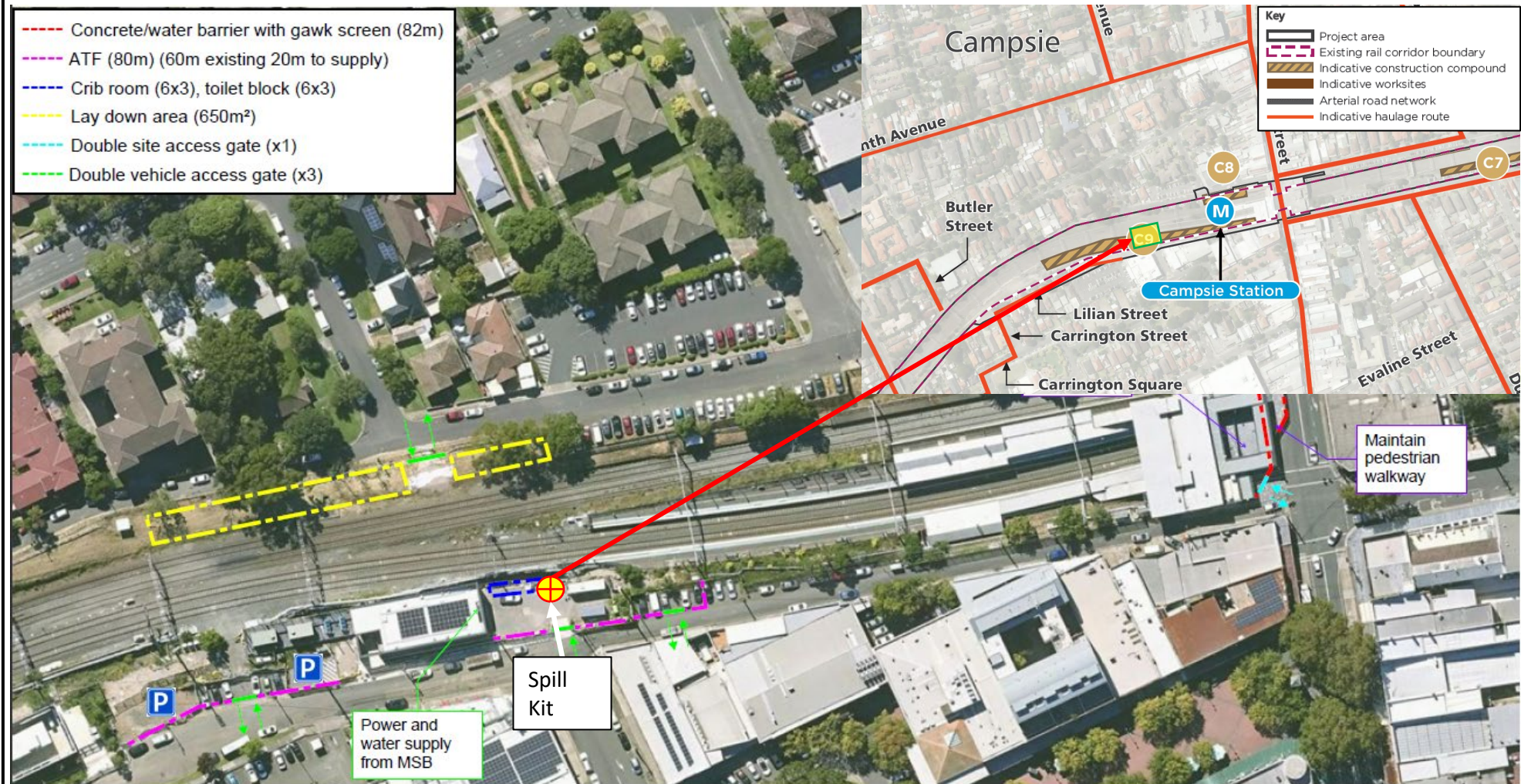
A19 Facility  
Refer to Dulwich Hill Station Ancillary Facility Checklist



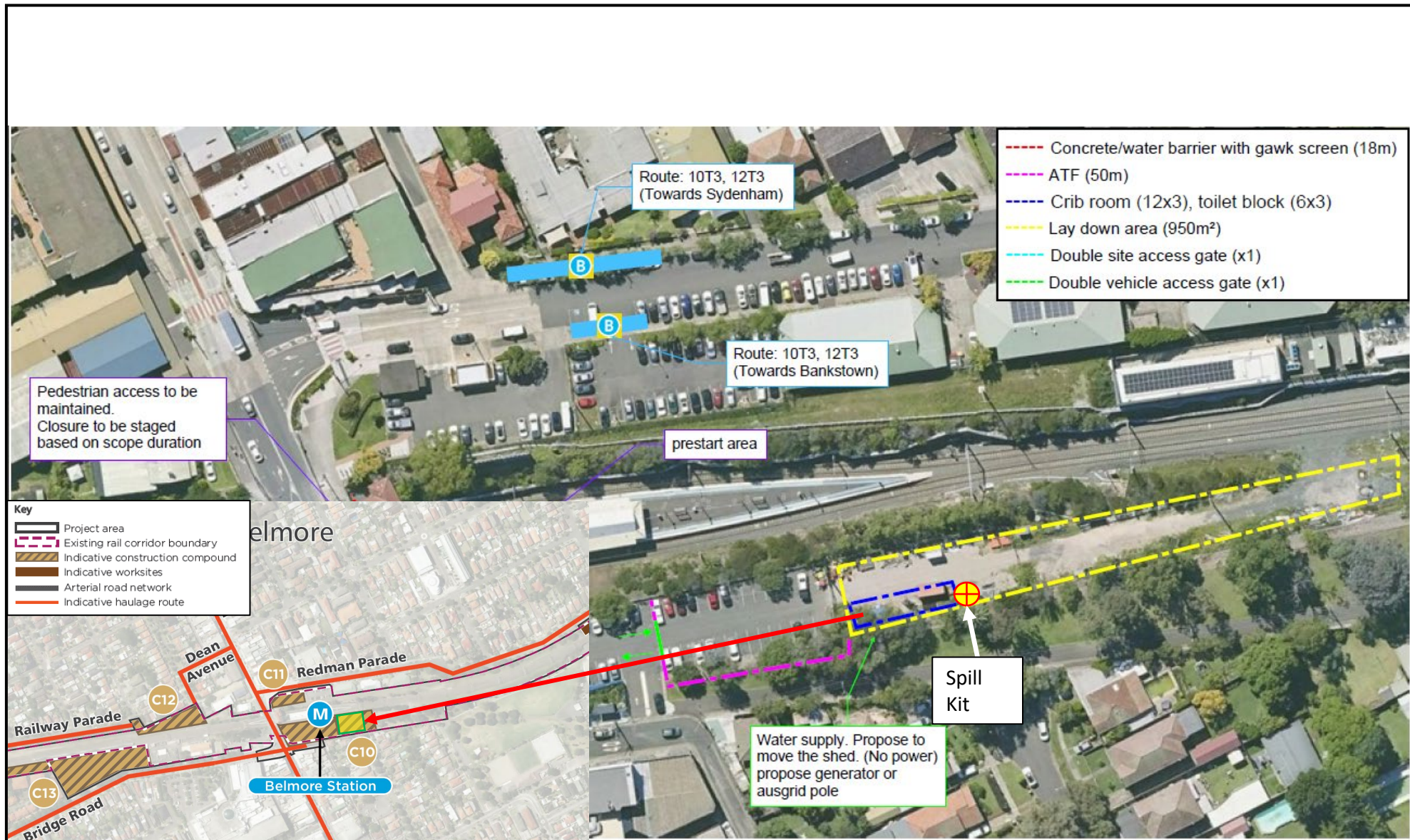
A16 Facility located in Indicative Construction Compound C4



A16 Facility located in Indicative Construction Compound C6



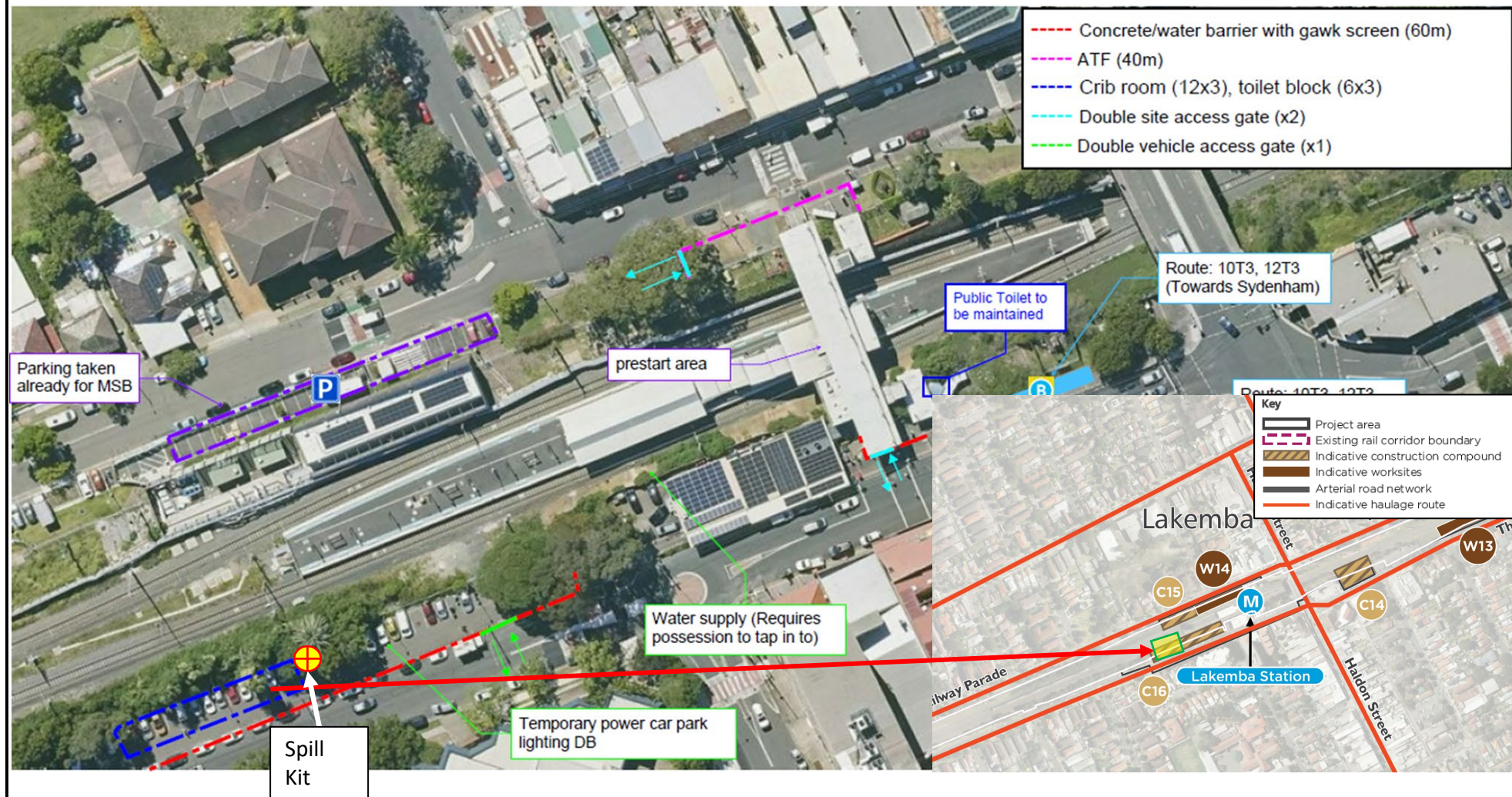
A16 Facility located in Indicative Construction Compound C9



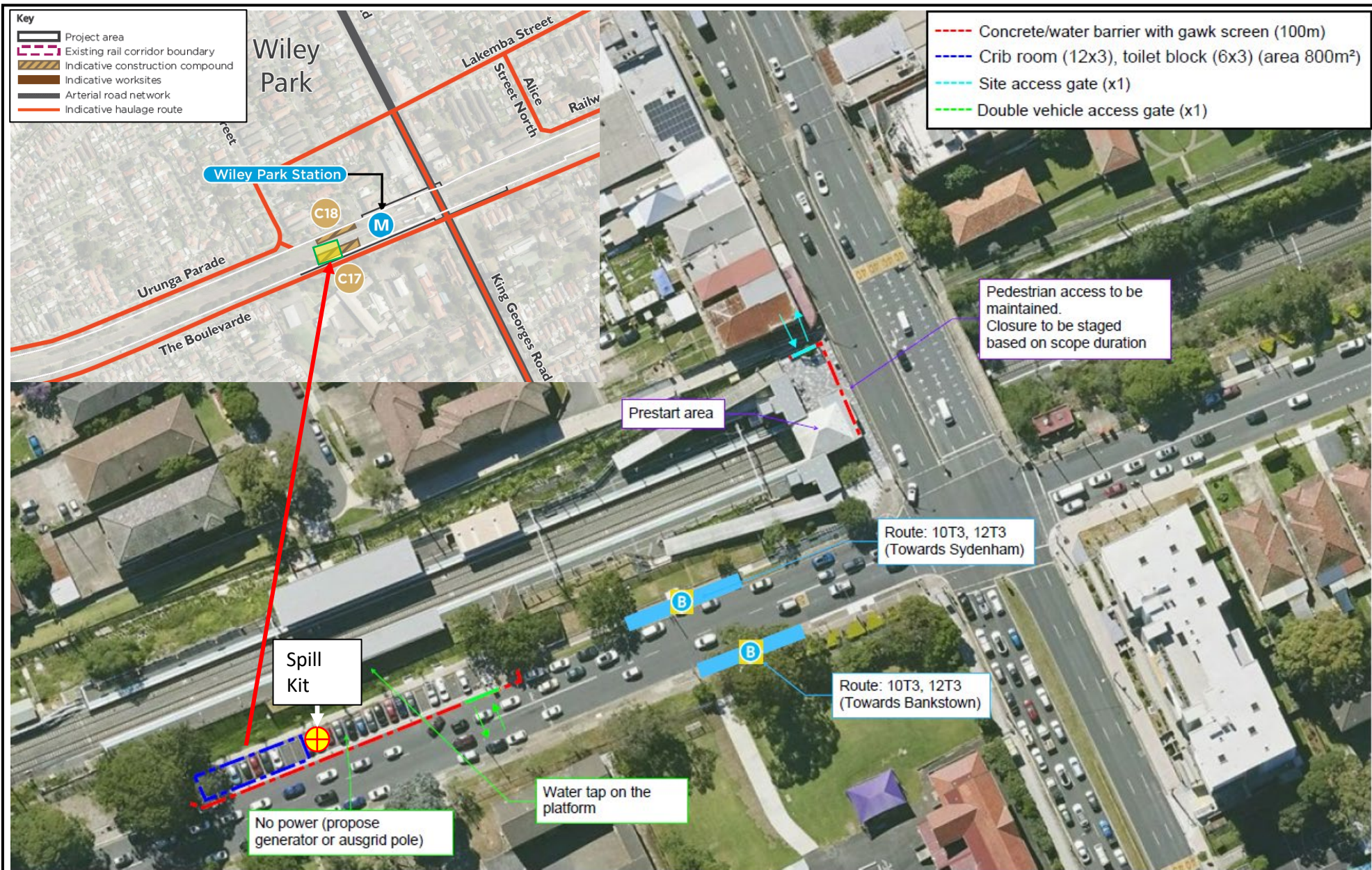
A16 Facility located in Indicative Construction Compound C10



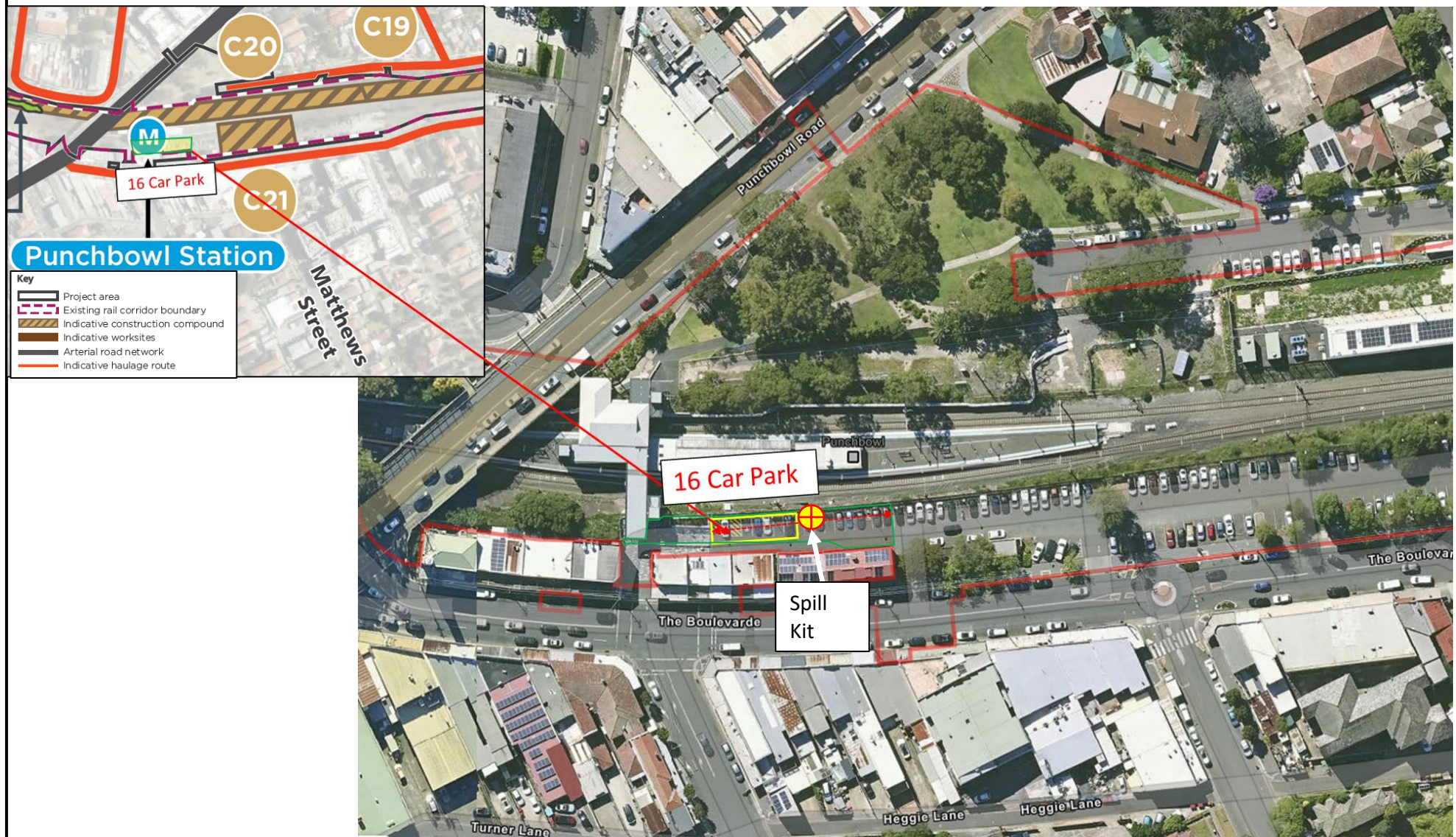
A16 Facility located in Indicative Construction Compound C13



A16 Facility located in Indicative Construction Compound C16



A16 Facility located in Indicative Construction Compound C17



A19 Facility  
Refer to Punchbowl Station Ancillary Facility Checklist

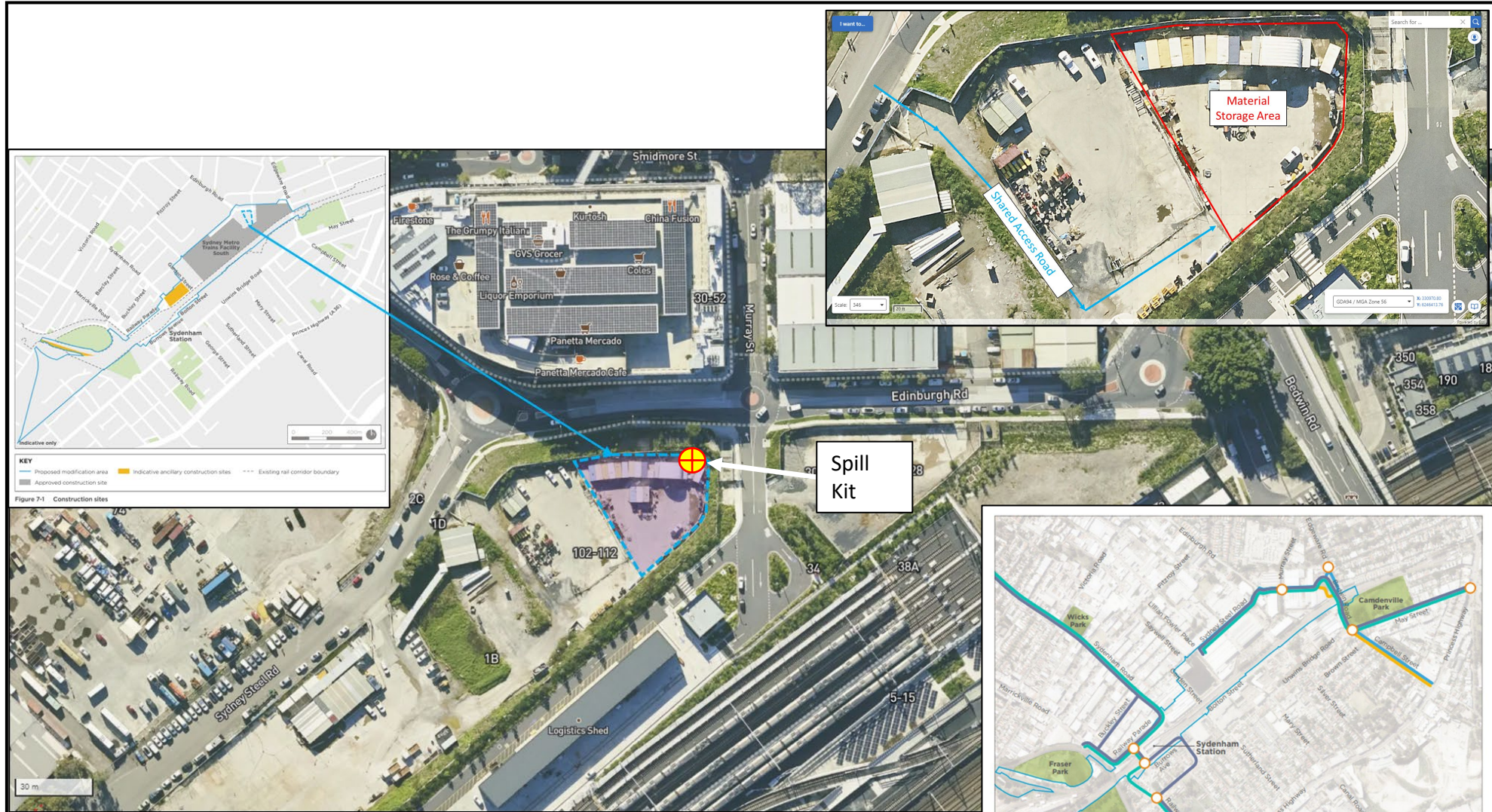


**JOHN  
HOLLAND**

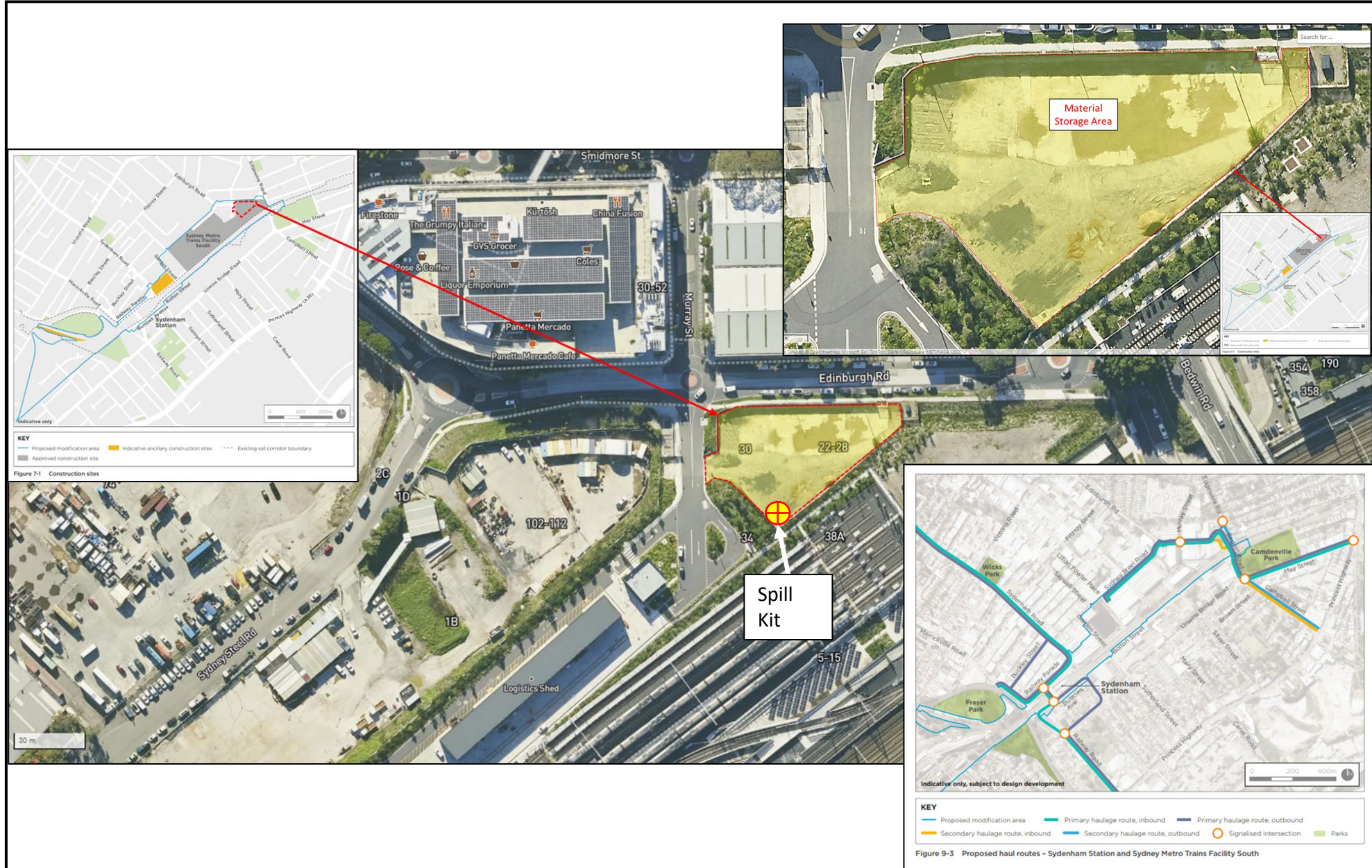
**Appendix 3 – Punchbowl Station**

ENVIRONMENTAL CONTROL MAP

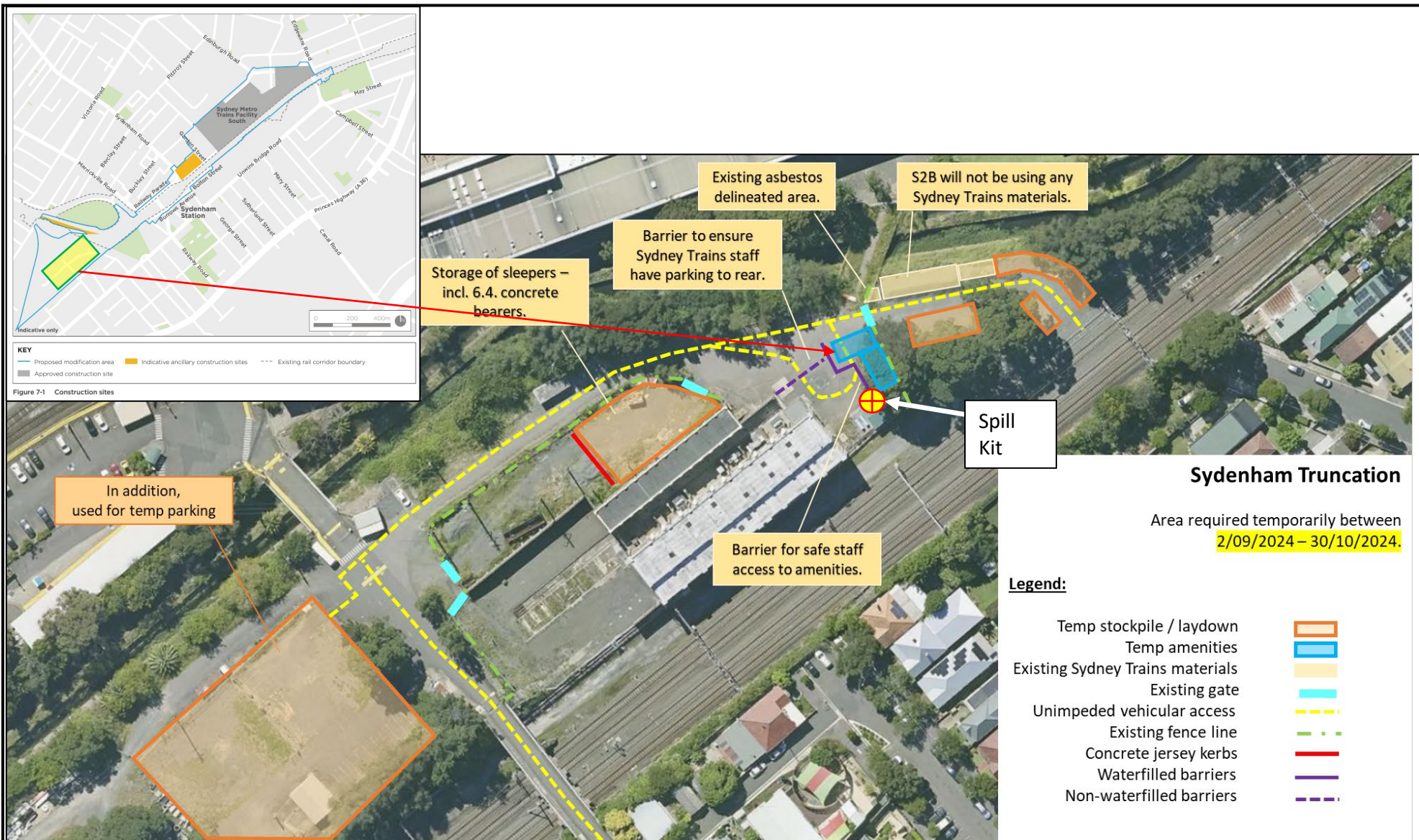
A3



A16 Facility located in TfNSW CA56



A16 Facility located in TfNSW CA56 Approved Construction Site



A19 Facility located in TfNSW CA56  
Refer to Way Street Substation Ancillary Facility Checklist