





Water Monitoring Data - Monthly Summary									
Month and Year	August 2025		<div><div>LAING O'ROURKE</div><div>JOHN HOLLAND</div></div>						
Project	Sydney Metro SWM3								
EPL License No.	21147								
EPL Weblink	https://apps.epa.nsw.gov.au/prpoeoapp/Detail.aspx?instid=21147&id=21147&option=licence&searchrange=licence&range=POEO%20licence&prp=no&status=Issued								
Specific EPL monitoring conditions	M2 - Requirement to monitor concentration of pollutants discharged								
Monitoring Location	Number of times monitored during the month	Event based monitoring (Y/N)	Parameter e.g. TSS, pH	Unit eg. mg/L	Minimum value for month	Maximum value for month	Allowable Maximum limit	Allowable Minimum limit	Comment
SWM3 Monitoring Points	2	Y	NA	NA	NA	NA	NA	NA	24hr rainfall 11/08/25, 73.6mm (over 3 days), 19/08/2025, 21.8mm, visual inspection. No discharge off site.

Noise Monitoring Data - Monthly Summary		
Month and Year	August2025	 
Project	Sydney Metro SWM3	
EPL license No.	21147	
EPL Weblink	https://apps.epa.nsw.gov.au/prpoeoapp/Detail.aspx?instid=21147&id=21147&option=licence&searchrange=licence&range=POEO%20licence&prp=no&status=Issued	
Specific EPL monitoring conditions	M7.1 - Noise monitoring Appendix A- EPL R4.4 Validation Report	

Vibration Monitoring Data - Monthly Summary									
Month and Year	August2025								
Project	Sydney Metro SWM3								
EPL license No.	21147								
EPL Weblink	https://apps.epa.nsw.gov.au/prpoeoapp/Detail.aspx?instid=21147&id=21147&option=licence&searchrange=licence&range=POEO%20licence&prp=no&status=Issued								
Specific EPL monitoring conditions	M7.2 - Vibration monitoring								
Monitoring Location	Number of times monitoring during the month	Attended or continuous monitoring	Event based monitoring (Y/N)	Parameter eg. PPV	Unit	Minimum value for month	Maximum value for month	Goals/Targets	Comment
SWM3									No activities requiring vibration monitoring

Appendix A- EPL R4.4 Validation Report

EPL 21147

R4.4 Validation Report

SWM3 2025 WE05

R4.4 Sydney Metro Possession (WE05, 2nd & 3rd August 2025)

Document and Revision History

Document Details	
Title	R4.4 Validation Report
Client	Sydney Metro City & Southwest
JHLOR JV contract no.	K44

Revisions

Revision	Date	Description	Prepared by	Reviewed by
01	04/08/2025	Prepared for R4.4	Lucas Dobrolot	Andre Kruize

Management reviews

Review date	Details	Reviewed by

Controlled: NO

Copy no.:

Uncontrolled: YES

Table of Contents

Introduction	3
R4.4(a) For activities permitted under Condition L5.5 & L5.6, a validation report must be submitted to the EPA that includes the following detail:	3
1. Confirmation that the equipment used to undertake the works was as specified in the relevant Construction Noise and Vibration Impact Assessment for the worksite	3
2. A copy of the community notification required under Condition L5.11	4
3. Noise monitoring as required by L5.7(d).....	4
A. Details of any exceedances of predicted noise levels;	9
B. Details of the noise and vibration mitigation measures that were implemented as specified in the relevant Construction Noise and Vibration Impact Assessment for the worksite.....	9
C. The justification required under L5.5 for the carrying out of works outside of standard construction hours in L5.1.....	9
R4.4 (b) The validation report must be submitted to the EPA fortnightly from the commencement of the works permitted by L5.5 & L5.6 by no later than 2 business days from the end of each fortnight.	10
Attachment 1 – Noise Monitoring Locations & Results.....	11
Attachment 2 – Community Notification.....	20

Introduction

This validation report has been prepared in accordance with EPL 21147 Condition R4.4 for out-of-hour works carried out on 2nd August 0600 to 0800 & 3rd August 0600 to 1800 in Weekend 05 (WE05) across the corridor and stations, noise activities:

Low Impact Works (L5.1)

- Vegetation removal and maintenance
- Track & OHW Works investigation;
- Station Works (refresh);
- Protection Screen Door (PSD) & Mechanical Gap Filler (MGF) Testing Works
- Testing and commissioning equipment

Possession Works (L5.5)

- Site access 0600 to 0800 Saturday & Sunday (vehicle movement, not work)
- Asphaltting
- Rock anchors
- Screen installation
- High pressure roof cleaning
- Industrial painting

Occurred during possession on Sydney Metro's track (between Sydenham Station to Bankstown Station). Works were carried out under Condition L5.5 - Local Possessions.

Refer to **Attachment 1** for monitoring results.

Note: all noise monitoring results were impacted by inclement weather with;

- 17.2mm of rain by 9am Saturday
- 13mm of rain by 9am Sunday
- 28.2mm of rain by 6pm Sunday

A lot of the works were limited due to the weather, especially the asphaltting.

R4.4(a) For activities permitted under Condition L5.5 & L5.6, a validation report must be submitted to the EPA that includes the following detail:

1. **Confirmation that the equipment used to undertake the works was as specified in the relevant Construction Noise and Vibration Impact Assessment for the worksite**

The assessment prepared for the works included modelling for the following plant and equipment:

- Track Works/OHW
 - Powered hand tool
 - Hi-rail Excavator
 - Sennebogen
 - Track Welding Kit
 - Track Profile Grinder
 - Hi rail EWP
- Station Works
 - Powered hand tool
 - Hi-rail EWP
 - Excavators with hammer attachments

- Hydremas
- Mini hydremas
- Generators
- PSD & MGF Testing and commissioning works
 - Hand tool

2. A copy of the community notification required under Condition L5.11

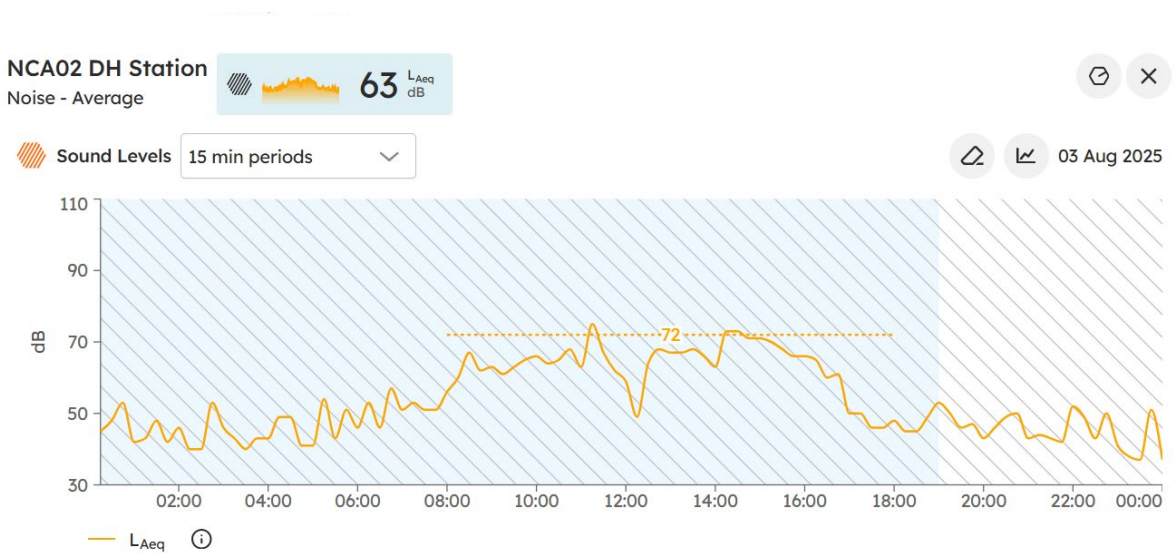
A copy of the community notification required under Condition L5.11 is appended as **Attachment 2**.

3. Noise monitoring as required by L5.7(d)

WE05 works noise monitoring was carried out at the following locations along the project corridor.

A. NCA 02 Noise Monitor (HEX-000465) is 22 m S of 57A Ewart St, Dulwich Hill

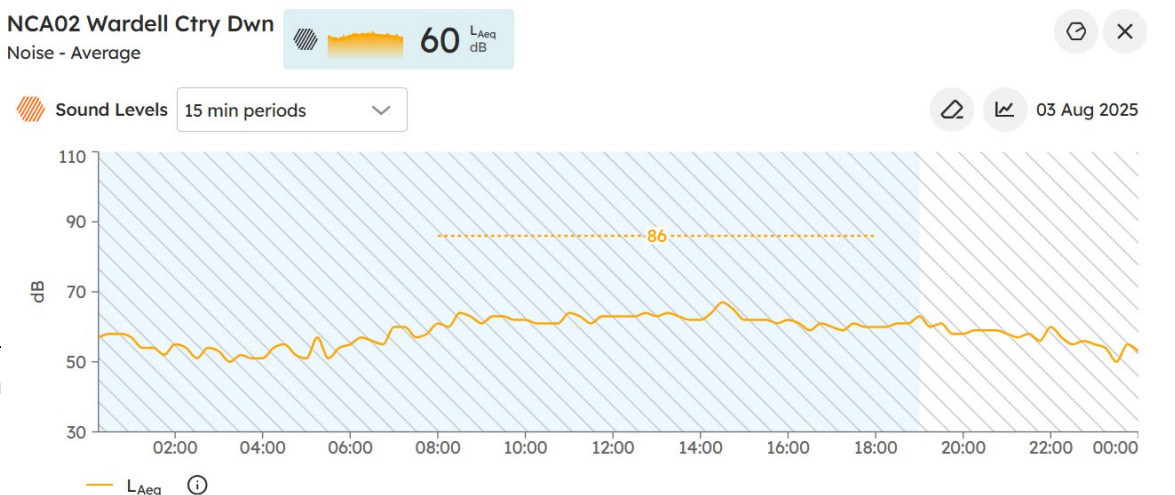
	Distance to the Source of Noise (m)	Sunday Day, 3 August, 0800-1800 Prediction (L _{Aeq} 15 minutes)
Monitor	79	72
Nearest Resident	72	73



Note: exceedances due to construction plant and equipment working in close proximity to the noise logger. The appropriate notification and additional mitigations were offered to the impacted receivers. Inclement weather is thought to also have influenced the results. No complaints received.

B. NCA 02 Noise Monitor (HEX-000516) is 35 m NW of 2 Dudley St, Dulwich Hill

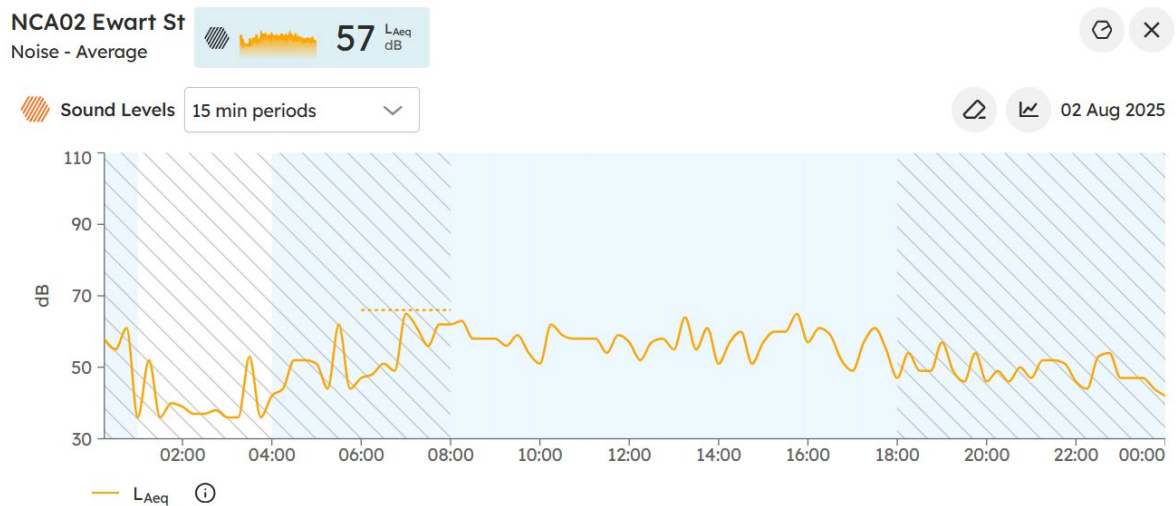
	Distance to the Source of Noise (m)	Sunday Day, 3 August, 0800-1800 Prediction (L _{Aeq} 15 minutes)
Monitor	13	86
Nearest Resident	43	76



Note: Reduced works due to inclement weather.

C. NCA 02 Noise Monitor (HEX-000516) is 15 m SW of 73 Ewart St, Dulwich Hill

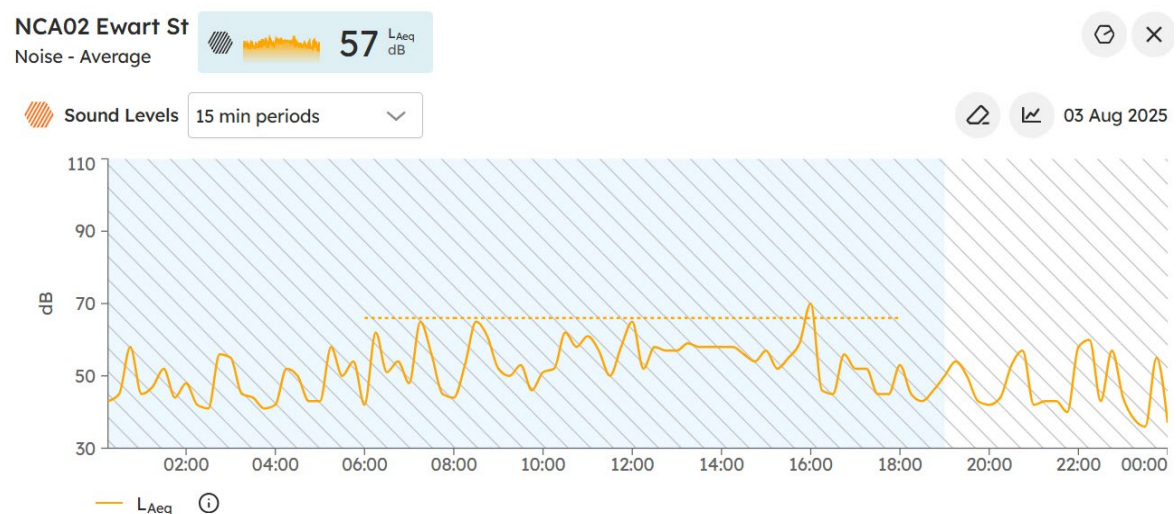
	Distance to the Source of Noise (m)	Saturday Day, 2 August, 0600-0800 Prediction (L _{Aeq} 15 minutes)
Monitor	15	66 (60 based on monitoring data from WE02)
Nearest Resident	15	66 (60 based on monitoring data from WE02)



Note: Dominant noise source is the ARTC.

D. NCA 02 Noise Monitor (HEX-000516) is 15 m SW of 73 Ewart St, Dulwich Hill

	Distance to the Source of Noise (m)	Sunday Night/Day, 2 August, 0600-0800 Prediction (L _{Aeq} 15 minutes)
Monitor	15	66 (60 based on monitoring data from WE02)
Nearest Resident	15	66 (60 based on monitoring data from WE02)



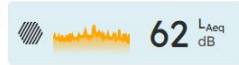
Note: Dominant noise source is the ARTC.

E. NCA 03 Noise Monitor (HEX-000760) is 13 m N of 3A Commons St, Hurlstone Park

	Distance to the Source of Noise (m)	Sunday Day, 3 August, 0800-1800 Prediction (L_{Aeq} 15 minutes)
Monitor	1	92
Nearest Resident	14	69

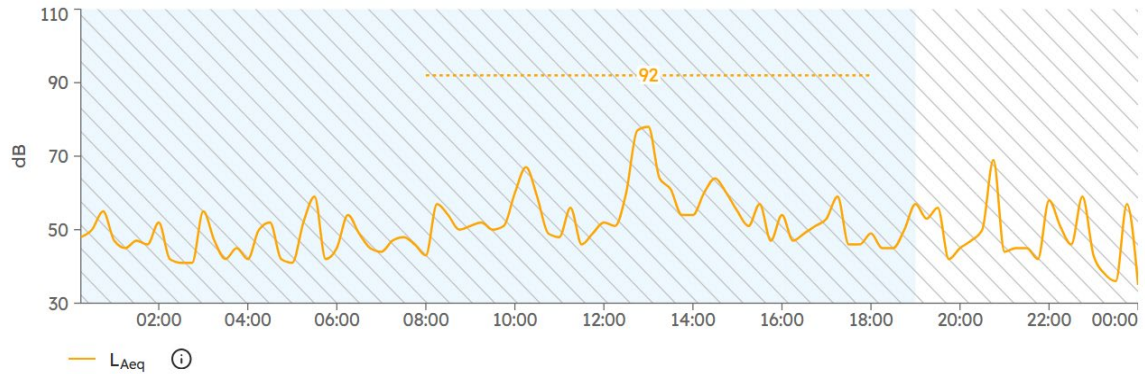
NCA03 HP Station

Noise - Average



Sound Levels 15 min periods

03 Aug 2025

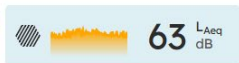


F. NCA 04 Noise Monitor (HEX-000296) is 10 m NE of 2A Charles Street, Canterbury

	Distance to the Source of Noise (m)	Sunday Day, 3 August, 0800-1800 Prediction (L_{Aeq} 15 minutes)
Monitor	9	76
Nearest Resident	19	70

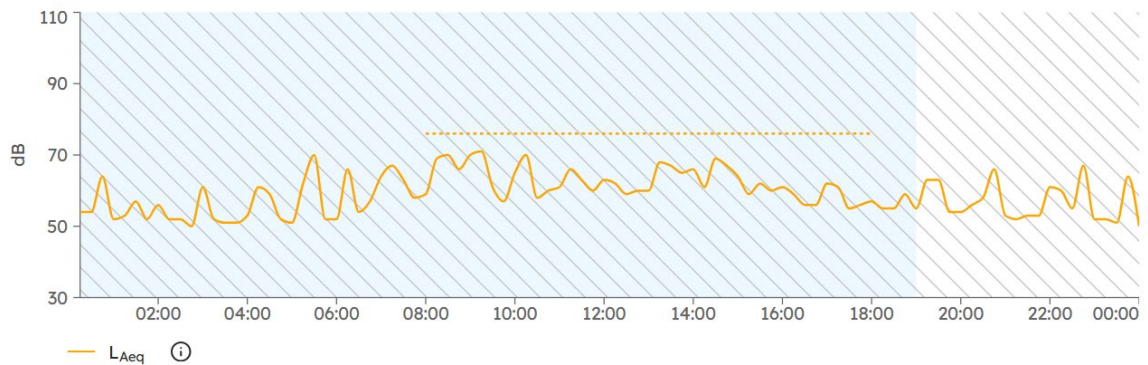
NCA04 CB Station

Noise - Average



Sound Levels 15 min periods

03 Aug 2025



G. NCA 06 Noise Monitor (HEX-000531) is 9m S of 1 13-15 Anglo Road, Campsie

	Distance to the Source of Noise (m)	Sunday Day, 3 August, 0800-1800 Prediction (L_{Aeq} 15 minutes)
Monitor	14	68
Nearest Resident	13	65

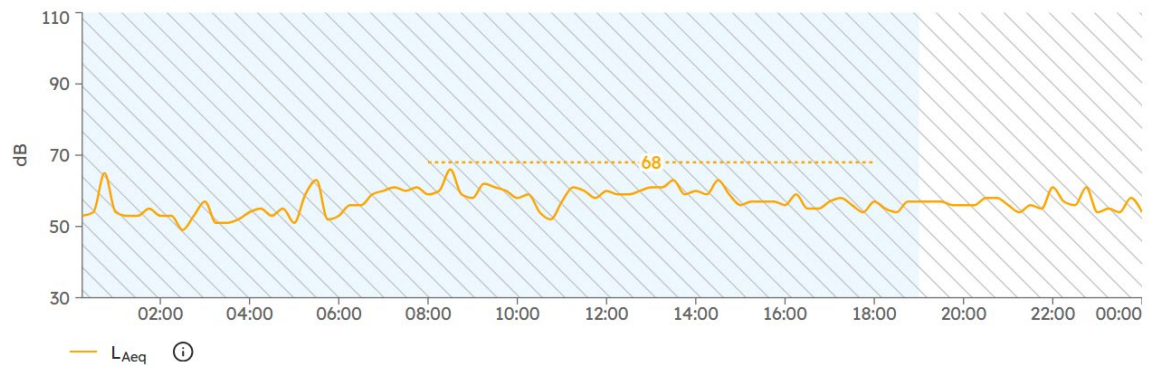
NCA06 CP Station

Noise - Average



Sound Levels 15 min periods

03 Aug 2025

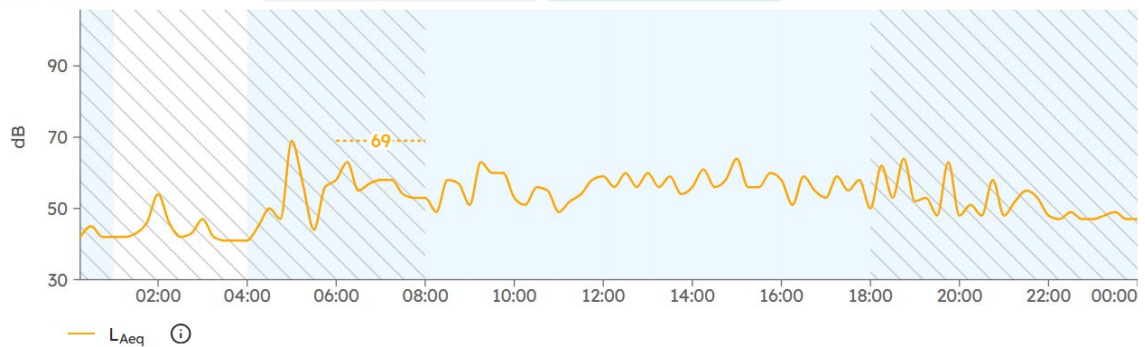


H. NCA 07 Noise Monitor (HEX-000531) is 4 m SE of 1 Hall Street, Belmore

	Distance to the Source of Noise (m)	Saturday Day, 2 August, 0600-0800 Prediction (L_{Aeq} 15 minutes)
Monitor	3	69
Nearest Resident	7	62

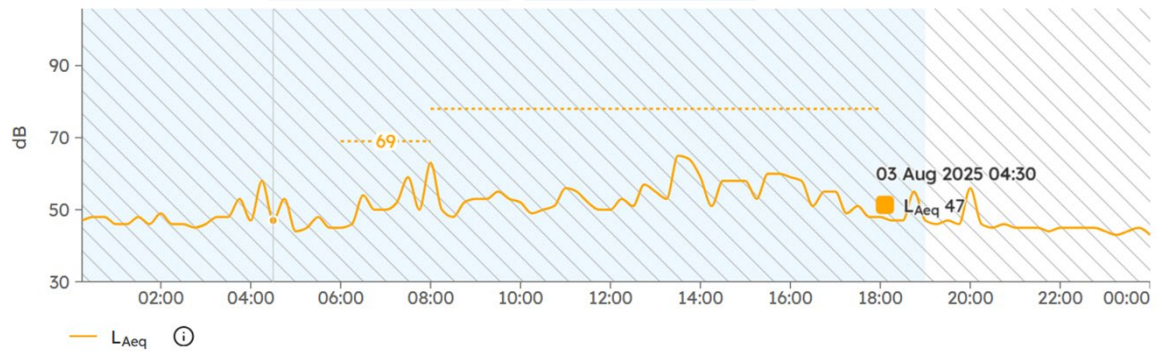
NCA07 Belmore Triangle

Noise - Average



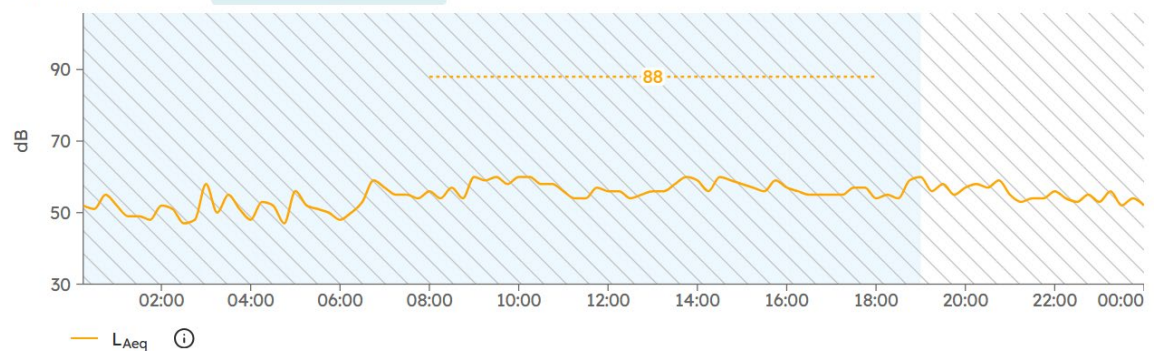
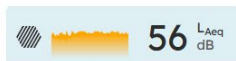
I. NCA 07 Noise Monitor (HEX-000531) is 4 m SE of 1 Hall Street, Belmore

	Distance to the Source of Noise (m)	Sunday Night/Day, 2 & 3 August, 0600-1800 Prediction (L_{Aeq} 15 minutes)
Monitor	3	0600-0800: 69dB, 0800-1800: 77dB
Nearest Resident	7	0600-0800: 62dB, 0800-1800: 70dB

NCA07 Belmore Triangle
Noise - Average

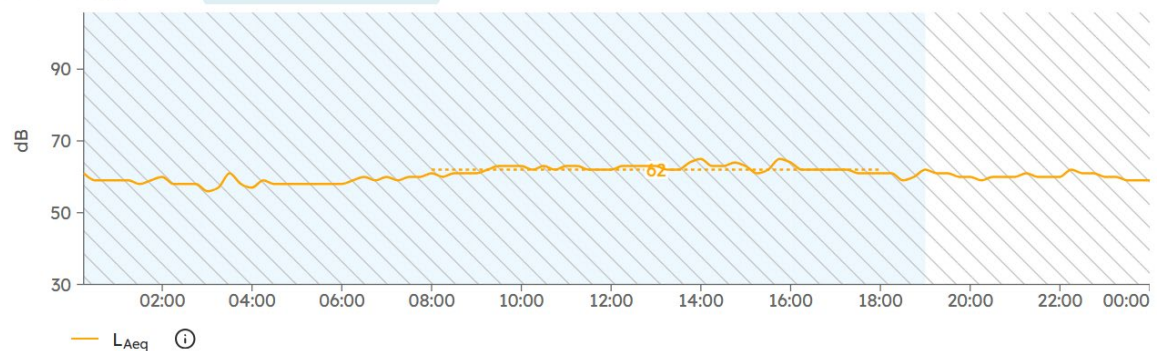
J. NCA 08 Noise Monitor (HEX-000758) is 29 m N of 15-19 Railway Parade, Lakemba

	Distance to the Source of Noise (m)	Sunday Day, 3 August, 0800-1800 Prediction (L_{Aeq} 15 minutes)
Monitor	16	88
Nearest Resident	50	78

NCA08 LKB Station
Noise - Average

K. NCA 09 Noise Monitor (HEX-000558) is 4 m N of 89 King Georges Rd, Wiley Park

	Distance to the Source of Noise (m)	Sunday Day, 3 August, 0800-1800 Prediction (L_{Aeq} 15 minutes)
Monitor	9	59
Nearest Resident	13	62

NCA09 WP Station
Noise - Average

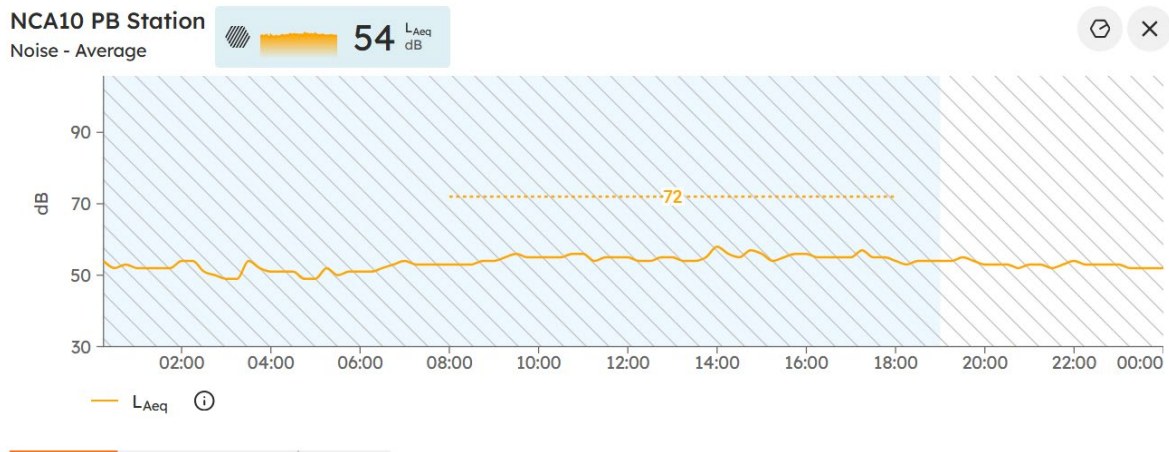
Note: exceedances due to extraneous noise sources, likely rain and road traffic.

L. NCA 10 Noise Monitor (HEX-000246) is 69 m NE of 42 Urunga Parade, Punchbowl

	Distance to the Source of Noise (m)	Sunday Day, 3 August, 0800-1800 Prediction (L _{Aeq} 15 minutes)
Monitor	78	72
Nearest Resident	15	58

NCA10 PB Station

Noise - Average



Refer to **Attachment 1** for detailed Monitoring Result & Locations.

A. Details of any exceedances of predicted noise levels;

There were no exceedances of the noise predictions in OOH due to construction activity that would require additional notification or mitigation.

B. Details of the noise and vibration mitigation measures that were implemented as specified in the relevant Construction Noise and Vibration Impact Assessment for the worksite

The mitigation measures that were implemented included:

- Planning process reduce OOH in more sensitive periods where possible
- All workers briefed at prestart of OOHW taking place.
- Works occur within the hours agreed in the OOHW only.
- All plant positioned so that the exhaust (or noisiest side of the plant) is pointing away from sensitive receivers, where possible.
- The engine of any plant is to be turned off when not in use
- Workers are not to shout, slam doors, drop objects or make any other unnecessary noise
- Workers are to be mindful of residents when mobilizing and demobilizing

Additional mitigation measures in accordance with the Sydney Metro Construction Noise and Vibration Strategy were implemented which included:

- Letter box drops
- Continuous monitoring
- Respite for receivers with potential noise exceedance of over 20dB and alternative accommodation offered for receivers with potential noise exceedance of over 30dB.

C. The justification required under L5.5 for the carrying out of works outside of standard construction hours in L5.1.

The works carried out on WE05 (2/3rd August 2025) could only be safely conducted during a rail possession due to works occurring within the rail corridor/danger zone. Works were completed in accordance with EPL Condition L5.5 Local Possession (as dynamic testing is occurring during

the week). Carrying out the construction activities during standard construction hours (specified in L5.1) would cause unacceptable risks to construction personnel safety; rail passenger and railways personnel safety and railway network operational reliability.

Construction activities occurring within the rail corridor/danger zone can only be safely conducted during a rail possession during the absence of trains.

All feasible and reasonable at-source noise controls were implemented in accordance with Condition L4.1, and noise mitigation measures were implemented in accordance with JHLORJV's CNVIS and Interim Construction Noise Guideline (DECC 2009).

R4.4 (b) The validation report must be submitted to the EPA fortnightly from the commencement of the works permitted by L5.5 & L5.6 by no later than 2 business days from the end of each fortnight.

This R4.4 Validation report has been submitted to EPA by no later than two business days after the end of the fortnight.

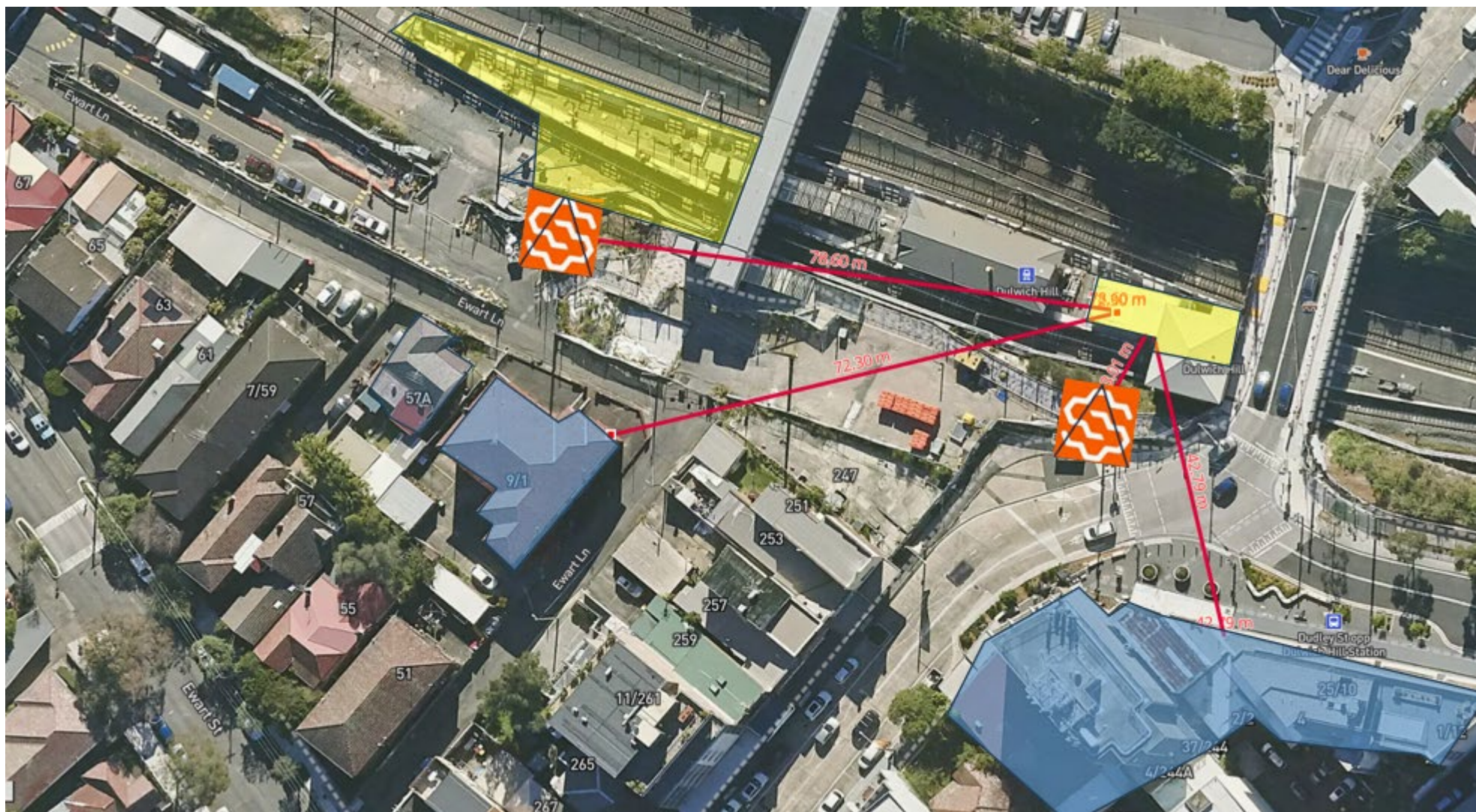
Attachment 1 – Noise Monitoring Locations & Results

- Monitoring Locations

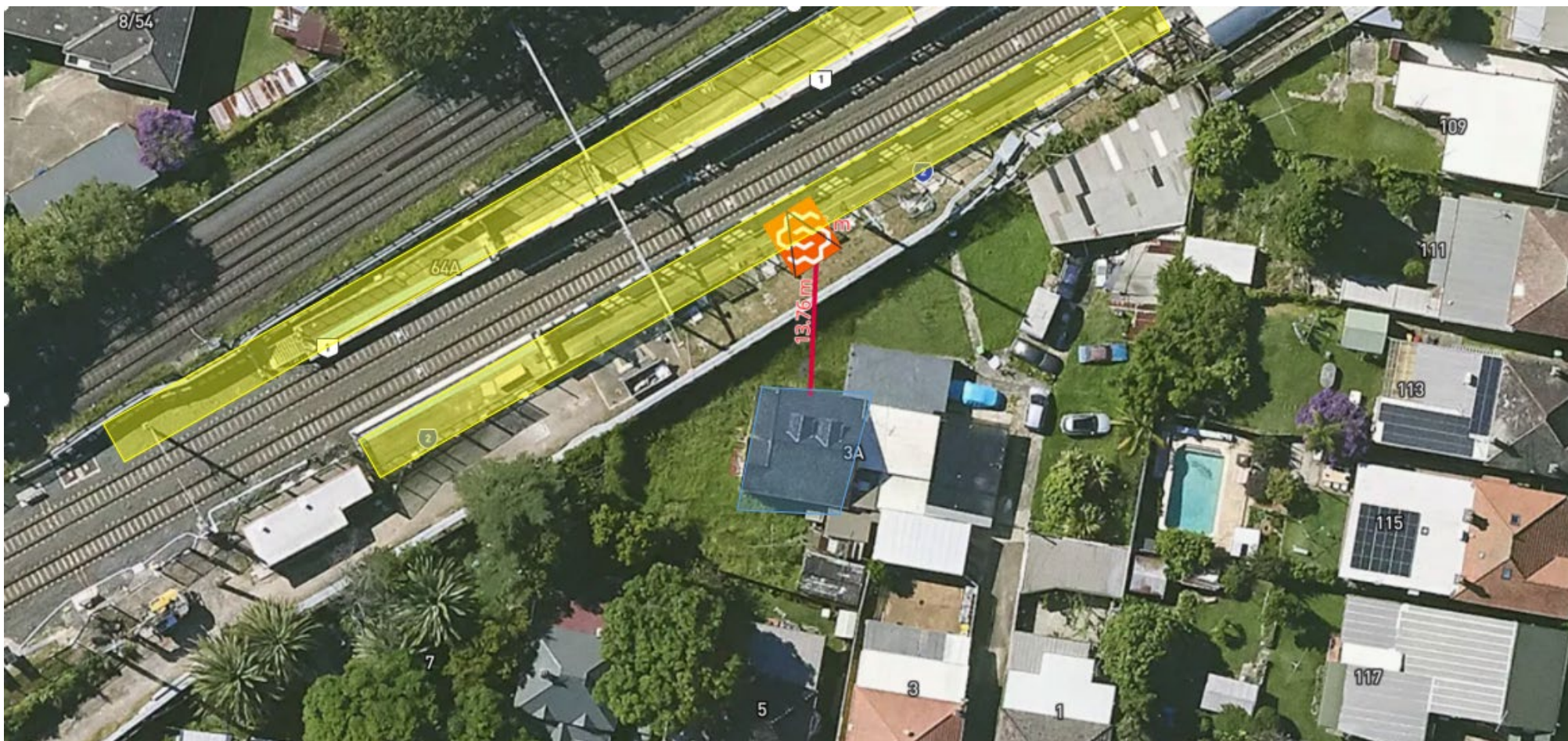
- A. NCA 02 Noise Monitor (HEX-000465) is 22 m S of 57A Ewart St, Dulwich Hill



- B. NCA 02 Noise Monitor (HEX-000516) is 35 m NW of 2 Dudley St, Dulwich Hill
- C. NCA 02 Noise Monitor (HEX-000516) is 15 m SW of 73 Ewart St, Dulwich Hill
- D. NCA 02 Noise Monitor (HEX-000516) is 15 m SW of 73 Ewart St, Dulwich Hill



E. NCA 03 Noise Monitor (HEX-000760) is 13 m N of 3A Commons St, Hurlstone Park



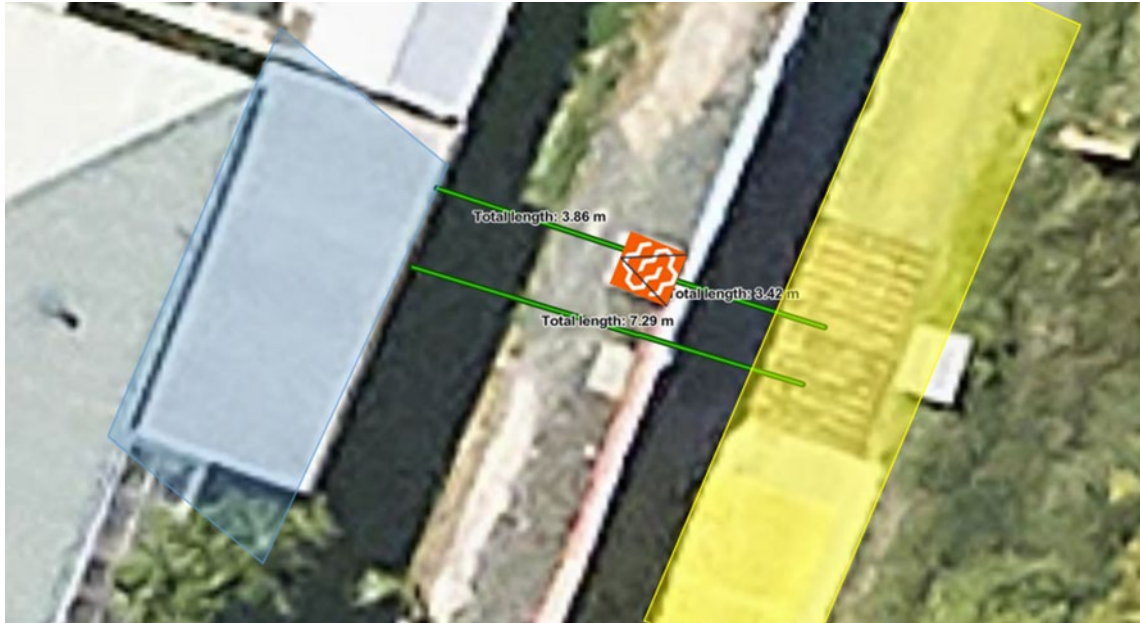
F. NCA 04 Noise Monitor (HEX-000296) is 10 m NE of 2A Charles Street, Canterbury



G. NCA 06 Noise Monitor (HEX-000531) is 9m S of 1 13-15 Anglo Road, Campsie



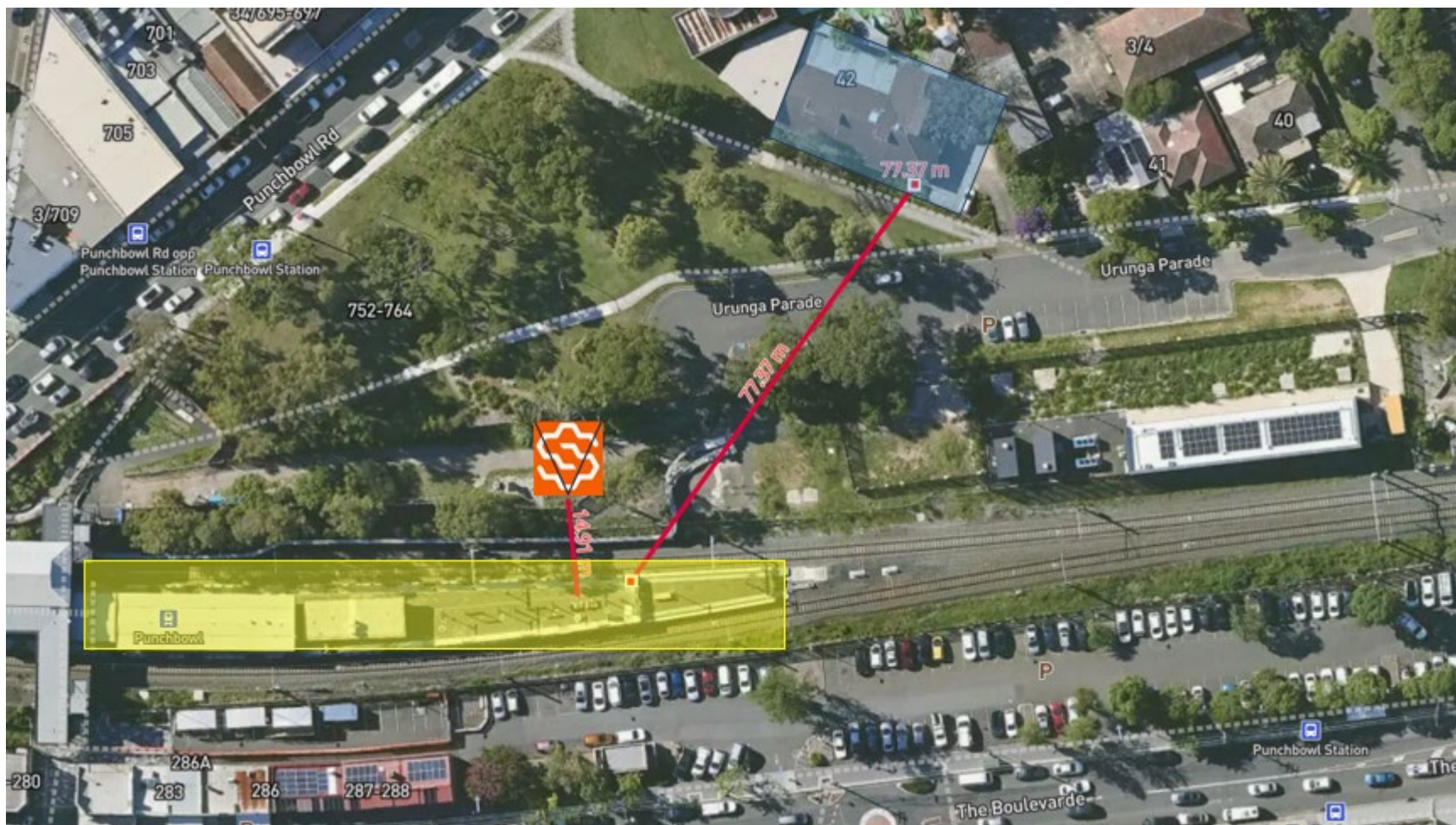
- H. NCA 07 Noise Monitor (HEX-000531) is 4 m SE of 1 Hall Street, Belmore
I. NCA 07 Noise Monitor (HEX-000531) is 4 m SE of 1 Hall Street, Belmore



J. NCA 08 Noise Monitor (HEX-000758) is 29 m N of 15-19 Railway Parade, Lakemba



- K. NCA 09 Noise Monitor (HEX-000246) is 69 m NE of 42 Urunga Parade, Punchbowl
L. NCA 10 Noise Monitor (HEX-000246) is 69 m NE of 42 Urunga Parade, Punchbowl



Attachment 2 – Community Notification

Community Notifications were provided to residents of Sydenham, Marrickville, Dulwich Hill, Hurlstone Park, Canterbury, Campsie, Belmore, Lakemba, Wiley Park, Punchbowl and Bankstown.

Community notifications for works undertaken at the previously stated locations available upon request.

EPL 21147

R4.4 Validation Report

SWM3 2025 WE06

R4.4 Sydney Metro Possession (WE06, 9th & 10th August 2025)

Document and Revision History

Document Details	
Title	R4.4 Validation Report
Client	Sydney Metro City & Southwest
JHLOR JV contract no.	K44

Revisions

Revision	Date	Description	Prepared by	Reviewed by
01	011/08/2025	Prepared for R4.4	Lucas Dobrolot	Andre Kruize

Management reviews

Review date	Details	Reviewed by

Controlled: NO Copy no.: Uncontrolled: YES

Table of Contents

Introduction	3
R4.4(a) For activities permitted under Condition L5.5 & L5.6, a validation report must be submitted to the EPA that includes the following detail:	3
1. Confirmation that the equipment used to undertake the works was as specified in the relevant Construction Noise and Vibration Impact Assessment for the worksite	3
2. A copy of the community notification required under Condition L5.11	4
3. Noise monitoring as required by L5.7(d).....	4
A. Details of any exceedances of predicted noise levels;	7
B. Details of the noise and vibration mitigation measures that were implemented as specified in the relevant Construction Noise and Vibration Impact Assessment for the worksite.....	7
C. The justification required under L5.5 for the carrying out of works outside of standard construction hours in L5.1.....	7
R4.4 (b) The validation report must be submitted to the EPA fortnightly from the commencement of the works permitted by L5.5 & L5.6 by no later than 2 business days from the end of each fortnight.	8
Attachment 1 – Noise Monitoring Locations & Results.....	9
Attachment 2 – Community Notification.....	16

Introduction

This validation report has been prepared in accordance with EPL 21147 Condition R4.4 for out-of-hour works carried out on 10th August 0600 to 1800 in Weekend 06 (WE06) across the corridor and stations, noise activities:

Low Impact Works (L5.1)

- Site access 0600 to 0800 Saturday & Sunday (pre-start, vehicle movement, set up, some low impact work)
- Vegetation removal and maintenance
- Track & OHW Works investigation;
- Station Works (refresh);
- Protection Screen Door (PSD) & Mechanical Gap Filler (MGF) Testing Works
- Testing and commissioning equipment

Possession Works (L5.5)

- Asphalting
- Rock anchors
- Screen installation
- High pressure roof cleaning
- Industrial painting

Occurred during possession on Sydney Metro's track (between Sydenham Station to Bankstown Station). Works were carried out under Condition L5.5 - Local Possessions.

Refer to **Attachment 1** for monitoring results.

Note: all noise monitoring results were impacted by inclement weather with;

- 30.2mm of rain by 9am Saturday
- 25.2mm of rain by 9am Sunday
- 14.8mm of rain by 6pm Sunday

A lot of the works were limited due to the weather and delayed design, especially the asphalting.

R4.4(a) For activities permitted under Condition L5.5 & L5.6, a validation report must be submitted to the EPA that includes the following detail:

1. **Confirmation that the equipment used to undertake the works was as specified in the relevant Construction Noise and Vibration Impact Assessment for the worksite**

The assessment prepared for the works included modelling for the following plant and equipment:

- Track Works/OHW
 - Powered hand tool
 - Hi-rail Excavator
 - Sennebogen
 - Track Welding Kit
 - Track Profile Grinder
 - Hi rail EWP
- Station Works
 - Powered hand tool
 - Hi-rail EWP

- Excavators with hammer attachments
- Hydremas
- Mini hydremas
- Generators
- PSD & MGF Testing and commissioning works
 - Hand tool

2. A copy of the community notification required under Condition L5.11

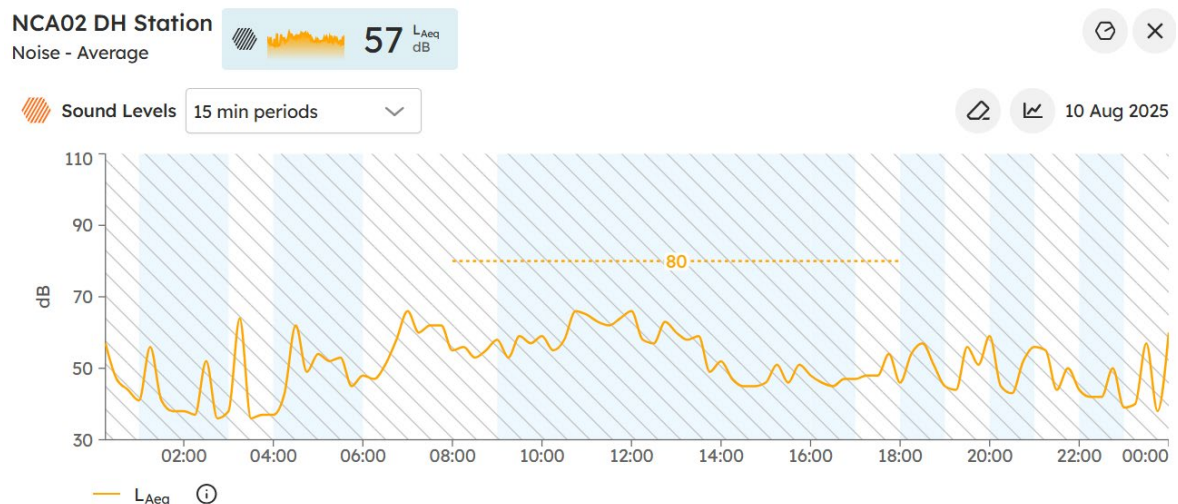
A copy of the community notification required under Condition L5.11 is appended as **Attachment 2**.

3. Noise monitoring as required by L5.7(d)

WE06 works noise monitoring was carried out at the following locations along the project corridor.

A. NCA 02 Noise Monitor (HEX-000465) is 22 m S of 57A Ewart St, Dulwich Hill

	Distance to the Source of Noise (m)	Sunday Day, 10 August, 0800-1800 Prediction (L_{Aeq} 15 minutes)
Monitor	16	80
Nearest Resident	36	73



B. NCA 02 Noise Monitor (HEX-000516) is 10 m SW of 73 Ewart St, Dulwich Hill

	Distance to the Source of Noise (m)	Sunday Day, 10 August, 0600-0800 Prediction (L_{Aeq} 15 minutes)
Monitor	10	64
Nearest Resident	10	64

NCA02 Ewart St

Noise - Average

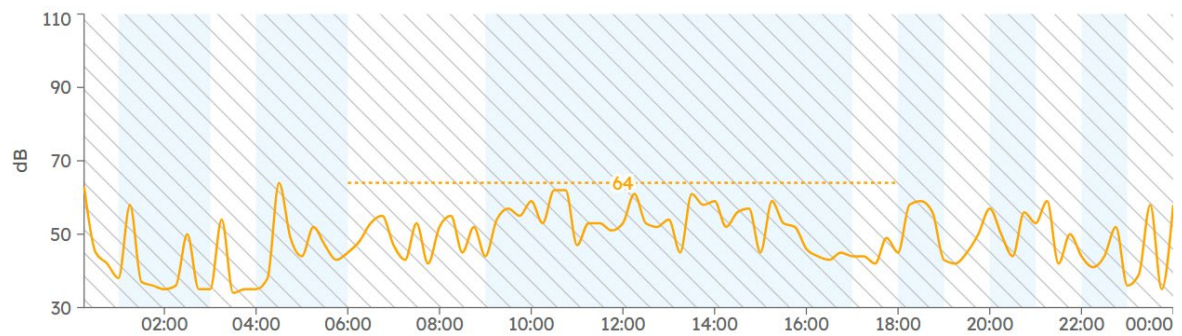


Sound Levels

15 min periods



10 Aug 2025



C. NCA 03 Noise Monitor (HEX-000760) is 14 m N of 3A Commons St, Hurlstone Park

	Distance to the Source of Noise (m)	Sunday Day, 10 August, 0800-1800 Prediction (L_{Aeq} 15 minutes)
Monitor	1	92
Nearest Resident	14	69

Note: ARTC dominant noise source.

NCA03 HP Station

Noise - Average

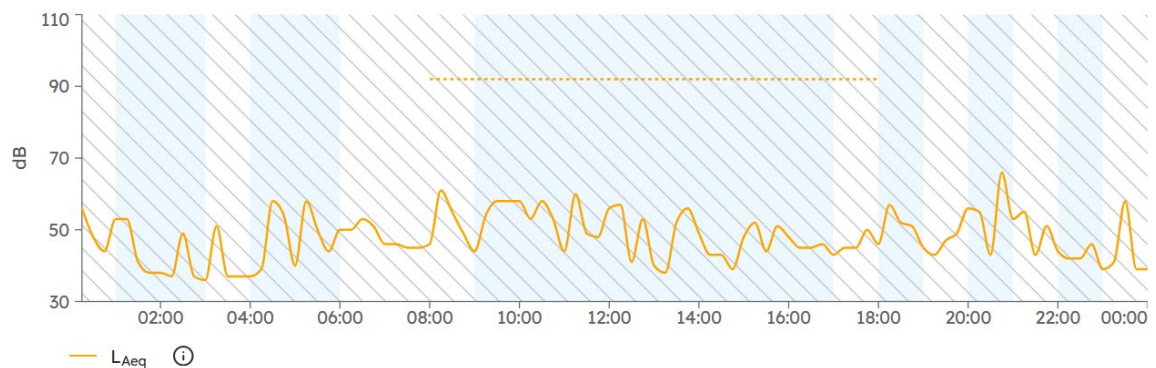


Sound Levels

15 min periods



10 Aug 2025



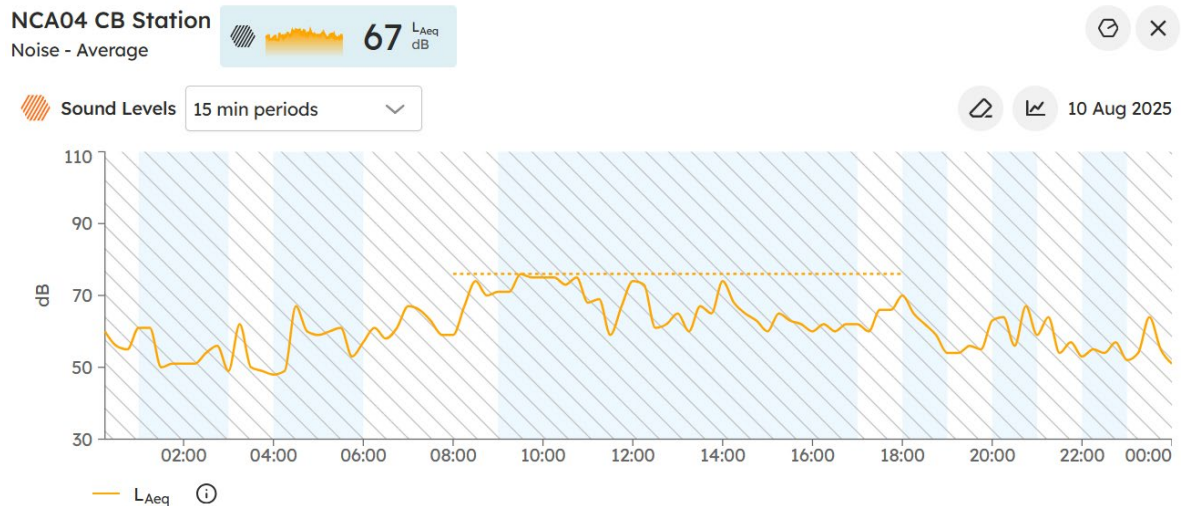
Note: Hurlstone Park works cancelled due to program change.

D. NCA 04 Noise Monitor (HEX-000296) is 10 m NE of 2A Charles Street, Canterbury

	Distance to the Source of Noise (m)	Sunday Day, 10 August, 0800-1800 Prediction (L_{Aeq} 15 minutes)
Monitor	9	76
Nearest Resident	19	70

NCA04 CB Station

Noise - Average

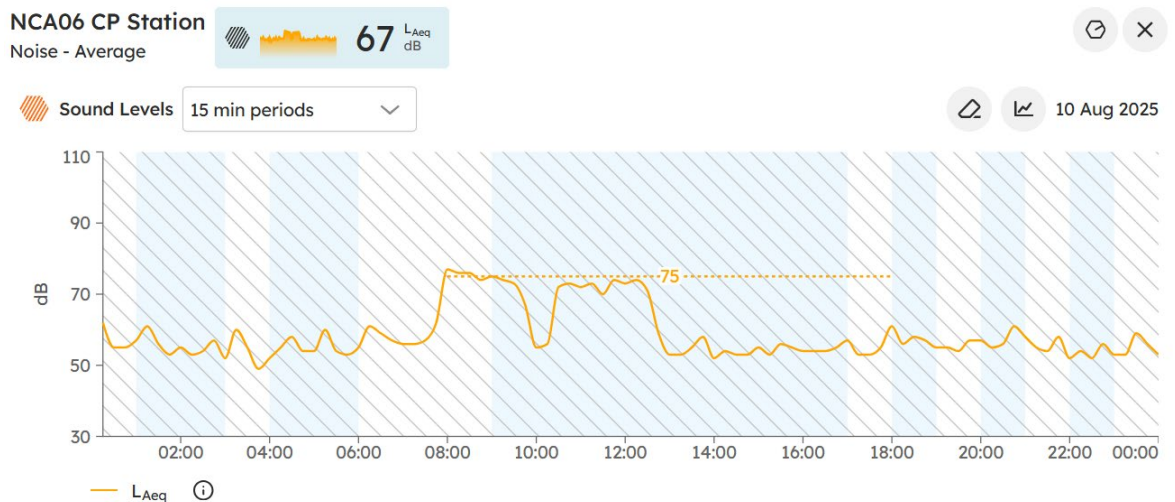


E. NCA 06 Noise Monitor (HEX-000531) is 9m S of 1 13-15 Anglo Road, Campsie

	Distance to the Source of Noise (m)	Sunday Day, 10 August, 0800-1800 Prediction (L_{Aeq} 15 minutes)
Monitor	14	75
Nearest Resident	13	72

NCA06 CP Station

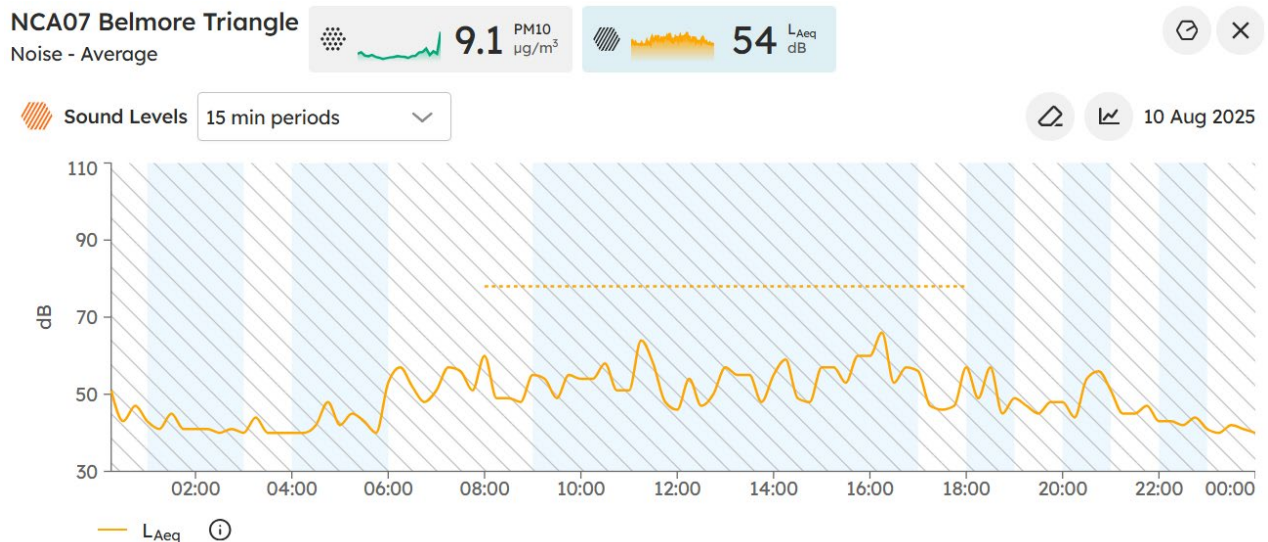
Noise - Average



Note: Minor exceedance due to works occurring closer to the logger, this is unlikely have resulted in an exceedance at the sensitive receiver.

F. NCA 07 Noise Monitor (HEX-000531) is 4 m SE of 1 Hall Street, Belmore

	Distance to the Source of Noise (m)	Sunday Day, 10 th August, 0800-1800 Prediction (L _{Aeq} 15 minutes)
Monitor	3	78
Nearest Resident	7	71

NCA07 Belmore Triangle
Noise - Average

Refer to **Attachment 1** for detailed Monitoring Result & Locations.

A. Details of any exceedances of predicted noise levels;

There was one minor exceedance due to works occurring closer to the logger, this is unlikely to have resulted in an exceedance at the sensitive receiver. were no exceedances of the noise predictions in OOH due to construction activity that would require additional notification or mitigation.

B. Details of the noise and vibration mitigation measures that were implemented as specified in the relevant Construction Noise and Vibration Impact Assessment for the worksite

The mitigation measures that were implemented included:

- Planning process reduce OOH in more sensitive periods where possible
- All workers briefed at prestart of OOHW taking place.
- Works occur within the hours agreed in the OOHW only.
- All plant positioned so that the exhaust (or noisiest side of the plant) is pointing away from sensitive receivers, where possible.
- The engine of any plant is to be turned off when not in use
- Workers are not to shout, slam doors, drop objects or make any other unnecessary noise
- Workers are to be mindful of residents when mobilizing and demobilizing

Additional mitigation measures in accordance with the Sydney Metro Construction Noise and Vibration Strategy were implemented which included:

- Letter box drops
- Continuous monitoring
- Respite for receivers with potential noise exceedance of over 20dB and alternative accommodation offered for receivers with potential noise exceedance of over 30dB.

C. The justification required under L5.5 for the carrying out of works outside of standard

construction hours in L5.1.

The works carried out on WE06 (9/10th August 2025) could only be safely conducted during a rail possession due to works occurring within the rail corridor/danger zone. Works were completed in accordance with EPL Condition L5.5 Local Possession (as dynamic testing is occurring during the week). Carrying out the construction activities during standard construction hours (specified in L5.1) would cause unacceptable risks to construction personnel safety; rail passenger and railways personnel safety and railway network operational reliability.

Construction activities occurring within the rail corridor/danger zone can only be safely conducted during a rail possession during the absence of trains.

All feasible and reasonable at-source noise controls were implemented in accordance with Condition L4.1, and noise mitigation measures were implemented in accordance with JHLORJV's CNVIS and Interim Construction Noise Guideline (DECC 2009).

R4.4 (b) The validation report must be submitted to the EPA fortnightly from the commencement of the works permitted by L5.5 & L5.6 by no later than 2 business days from the end of each fortnight.

This R4.4 Validation report has been submitted to EPA by no later than two business days after the end of the fortnight.

Attachment 1 – Noise Monitoring Locations & Results

- Monitoring Locations

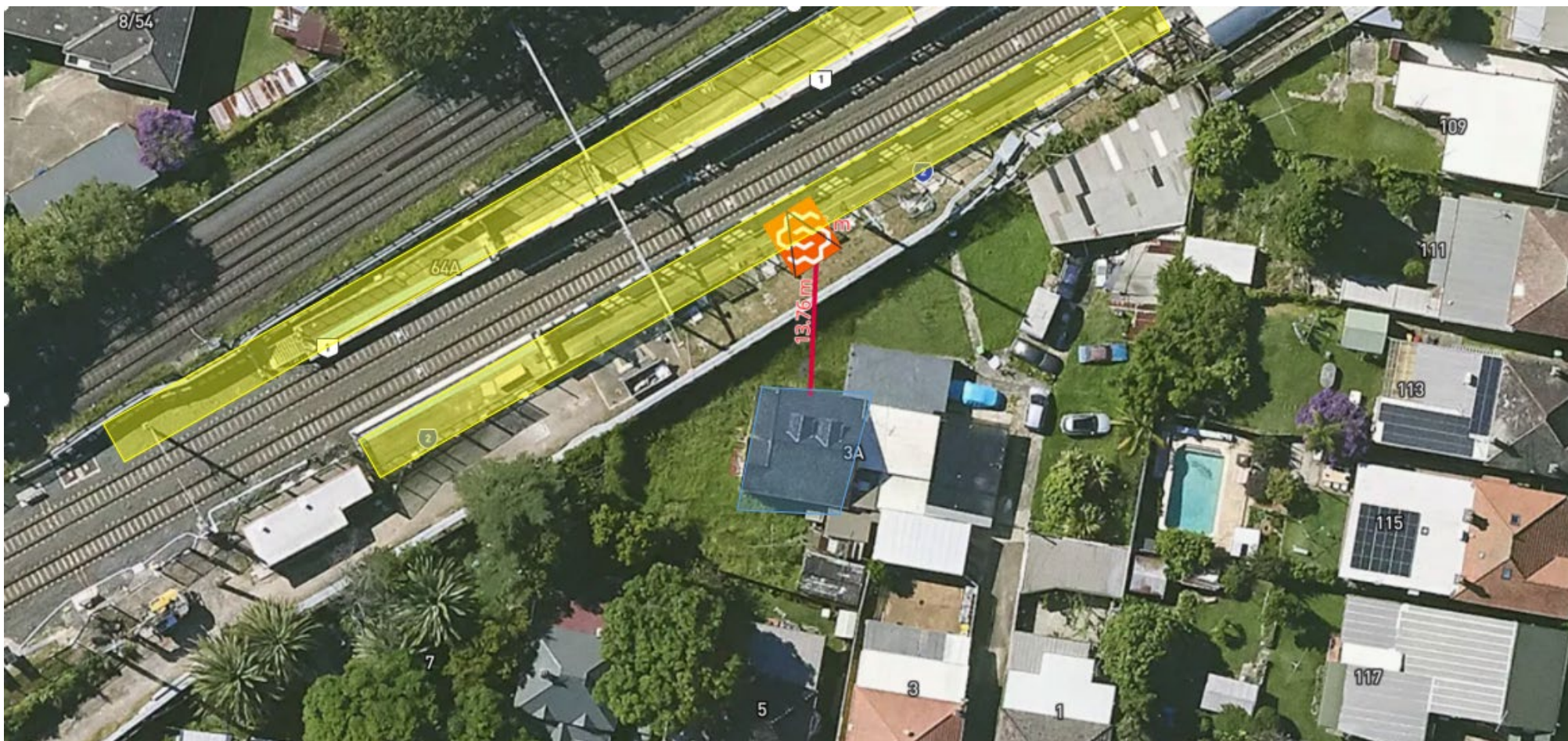
- A. NCA 02 Noise Monitor (HEX-000465) is 10 m N of 57A Ewart St, Dulwich Hill



- B. NCA 02 Noise Monitor (HEX-000516) is 20 m SW of 57A Ewart St, Dulwich Hill



C. NCA 03 Noise Monitor (HEX-000760) is 13 m N of 3A Commons St, Hurlstone Park



D. NCA 04 Noise Monitor (HEX-000296) is 10 m NE of 2A Charles Street, Canterbury



E. NCA 06 Noise Monitor (HEX-000531) is 9m S of 1 13-15 Anglo Road, Campsie



F. NCA 07 Noise Monitor (HEX-000531) is 4 m SE of 1 Hall Street, Belmore



Attachment 2 – Community Notification

Community Notifications were provided to residents of Sydenham, Marrickville, Dulwich Hill, Hurlstone Park, Canterbury, Campsie, Belmore, Lakemba, Wiley Park, Punchbowl and Bankstown.

Community notifications for works undertaken at the previously stated locations available upon request.

EPL 21147

R4.4 Validation Report

SWM3 2025 WE07

R4.4 Sydney Metro Possession (WK06, 13th August 2025) & (WE07, 16th & 17th August 2025)

Document and Revision History

Document Details	
Title	R4.4 Validation Report
Client	Sydney Metro City & Southwest
JHLOR JV contract no.	K44

Revisions

Revision	Date	Description	Prepared by	Reviewed by
01	18/08/2025	Prepared for R4.4	Lucas Dobrolot	Ted Zhang

Management reviews

Review date	Details	Reviewed by

Controlled: NO Copy no.: Uncontrolled: YES

Table of Contents

Introduction	3
R4.4(a) For activities permitted under Condition L5.5 & L5.6, a validation report must be submitted to the EPA that includes the following detail:	3
1. Confirmation that the equipment used to undertake the works was as specified in the relevant Construction Noise and Vibration Impact Assessment for the worksite	3
2. A copy of the community notification required under Condition L5.11	4
3. Noise monitoring as required by L5.7(d).....	4
A. Details of any exceedances of predicted noise levels;	15
B. Details of the noise and vibration mitigation measures that were implemented as specified in the relevant Construction Noise and Vibration Impact Assessment for the worksite.....	15
C. The justification required under L5.5 for the carrying out of works outside of standard construction hours in L5.1.....	16
R4.4 (b) The validation report must be submitted to the EPA fortnightly from the commencement of the works permitted by L5.5 & L5.6 by no later than 2 business days from the end of each fortnight.	16
Attachment 1 – Community Notification.....	17

Introduction

This validation report has been prepared in accordance with EPL 21147 Condition R4.4 for out-of-hour works carried out on 13th August 0000 to 0700 in Week 06 (WE06) & 16th and 17th August, Weekend 07 (WE07) across the corridor and stations, noise activities:

Low Impact Works (L5.1)

- Site access 0600 to 0800 Saturday & Sunday (pre-start, vehicle movement, set up, some low impact work)
- Vegetation removal and maintenance
- Track & OHW Works investigation;
- Station Works (refresh);
- Protection Screen Door (PSD) & Mechanical Gap Filler (MGF) Testing Works
- Testing and commissioning equipment

Possession Works (L5.5)

- Asphaltting
- Rock anchors
- Screen installation
- High pressure roof cleaning
- Industrial painting

Occurred during possession on Sydney Metro's track (between Sydenham Station to Bankstown Station). Works were carried out under Condition L5.5 - Local Possessions.

Utility and Local Area Works (L5.6)

- Batton removal at Beamish St Campsie which was subject to ROL.

Refer to **Attachment 1** for monitoring results.

R4.4(a) For activities permitted under Condition L5.5 & L5.6, a validation report must be submitted to the EPA that includes the following detail:

- 1. Confirmation that the equipment used to undertake the works was as specified in the relevant Construction Noise and Vibration Impact Assessment for the worksite**

The assessment prepared for the works included modelling for the following plant and equipment:

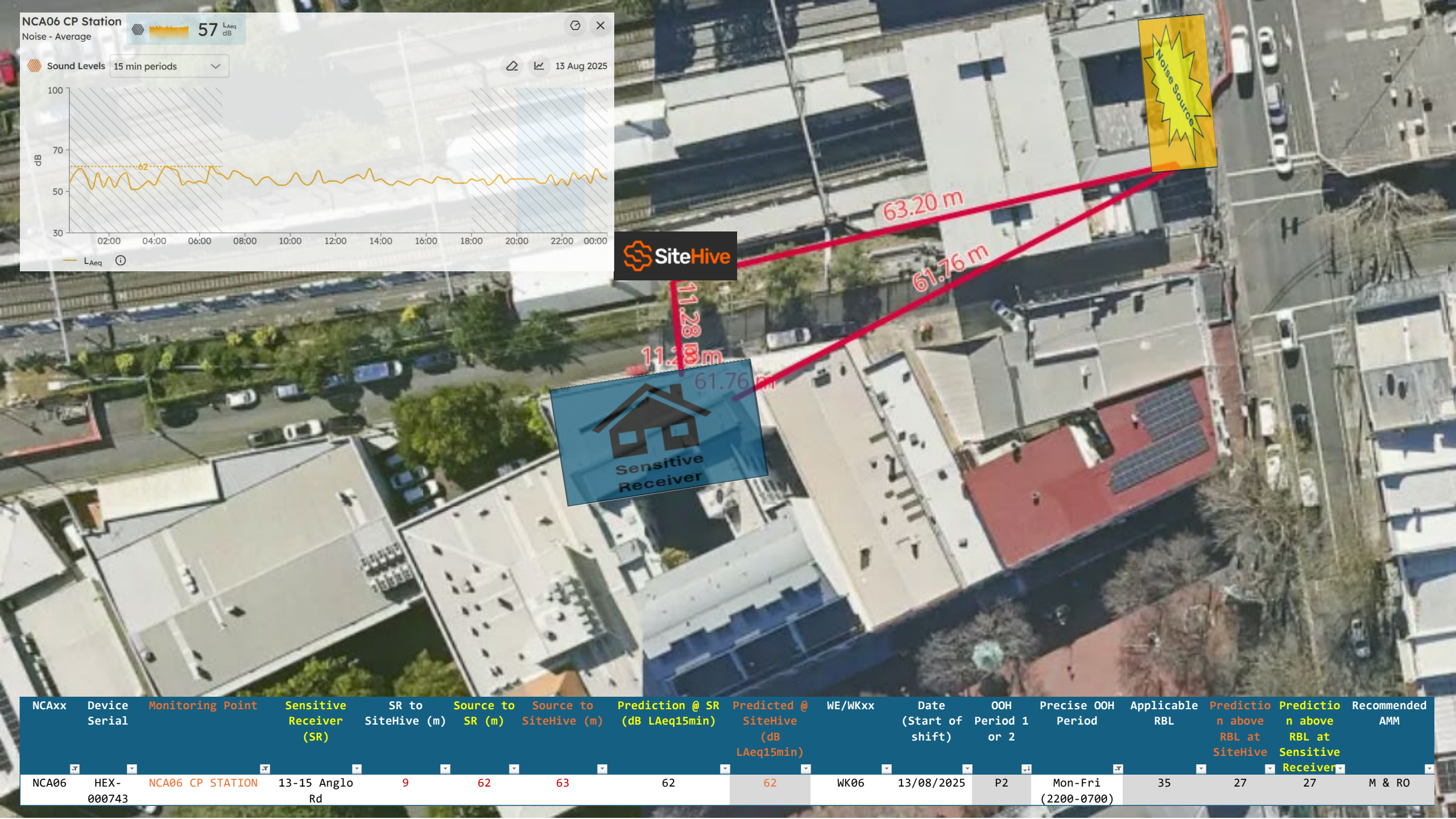
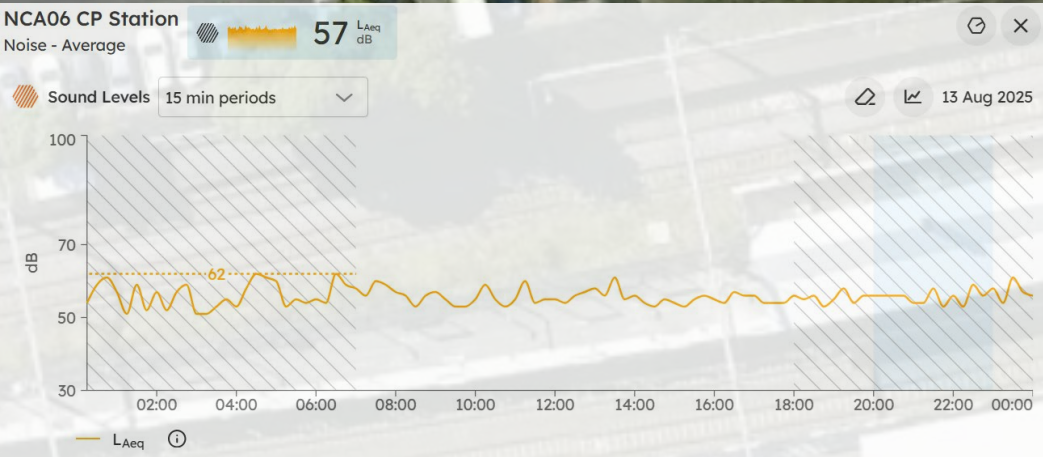
- Track Works/OHW
 - Powered hand tool
 - Hi-rail Excavator
 - Sennebogen
 - Track Welding Kit
 - Track Profile Grinder
 - Hi rail EWP
- Station Works
 - Powered hand tool
 - Hi-rail EWP
 - Excavators with hammer attachments
 - Hydremas/Mini hydremas
 - Generators
- PSD & MGF Testing and commissioning works
 - Hand tool

2. A copy of the community notification required under Condition L5.11

A copy of the community notification required under Condition L5.11 is appended as **Attachment 2**.

3. Noise monitoring as required by L5.7(d)

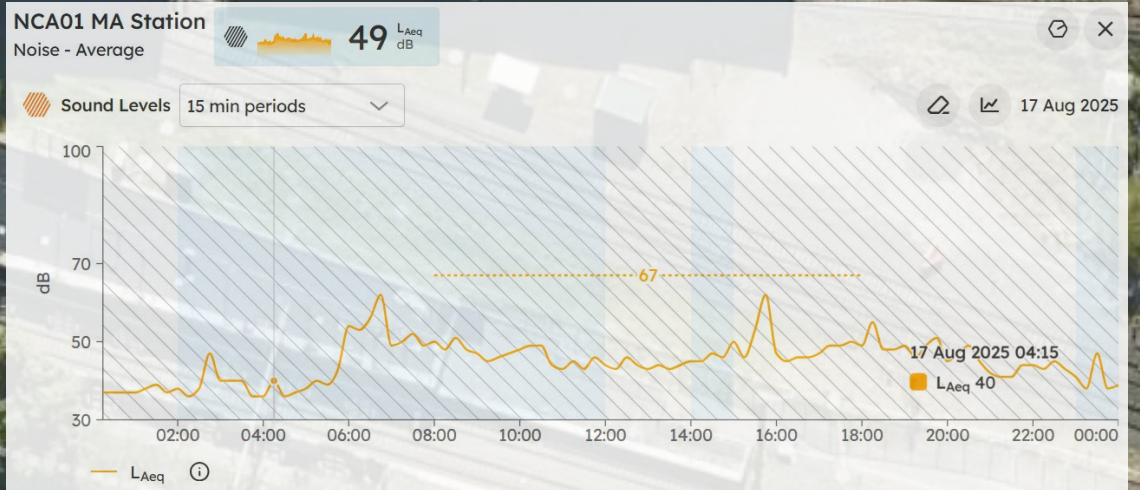
WK06 works noise monitoring was carried out at the following locations along the project corridor.



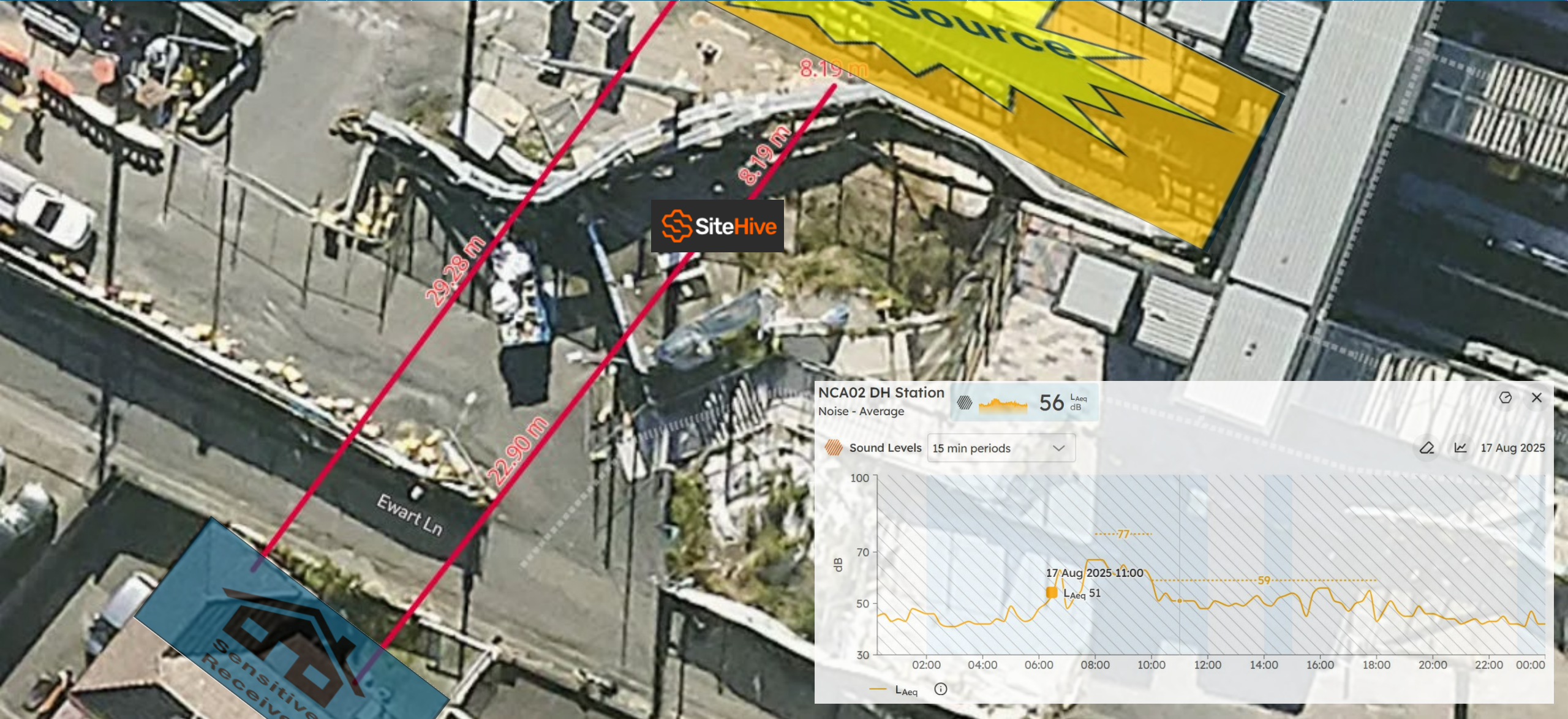
NCAxx	Device Serial	Monitoring Point	Sensitive Receiver (SR)	SR to SiteHive (m)	Source to SR (m)	Source to SiteHive (m)	Prediction @ SR (dB L _{Aeq} 15min)	Predicted @ SiteHive (dB L _{Aeq} 15min)	WE/WKxx	Date (Start of shift)	OOH Period 1 or 2	Precise OOH Period	Applicable RBL	Prediction above RBL at SiteHive	Prediction above RBL at Sensitive Receiver	Recommended AMM
NCA06	HEX-000743	NCA06 CP STATION	13-15 Anglo Rd	9	62	63	62	62	WK06	13/08/2025	P2	Mon-Fri (2200-0700)	35	27	27	M & RO

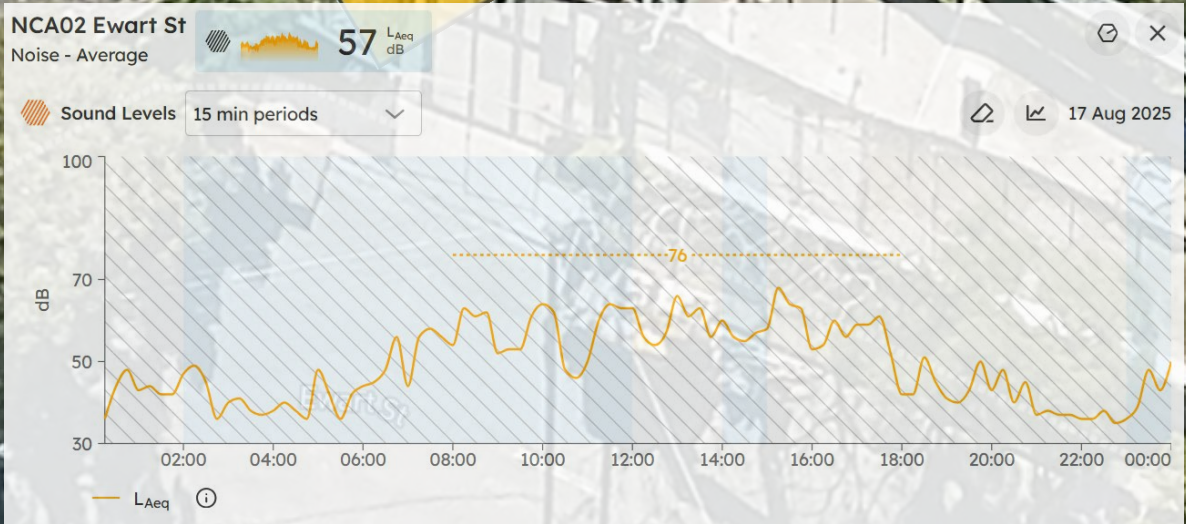
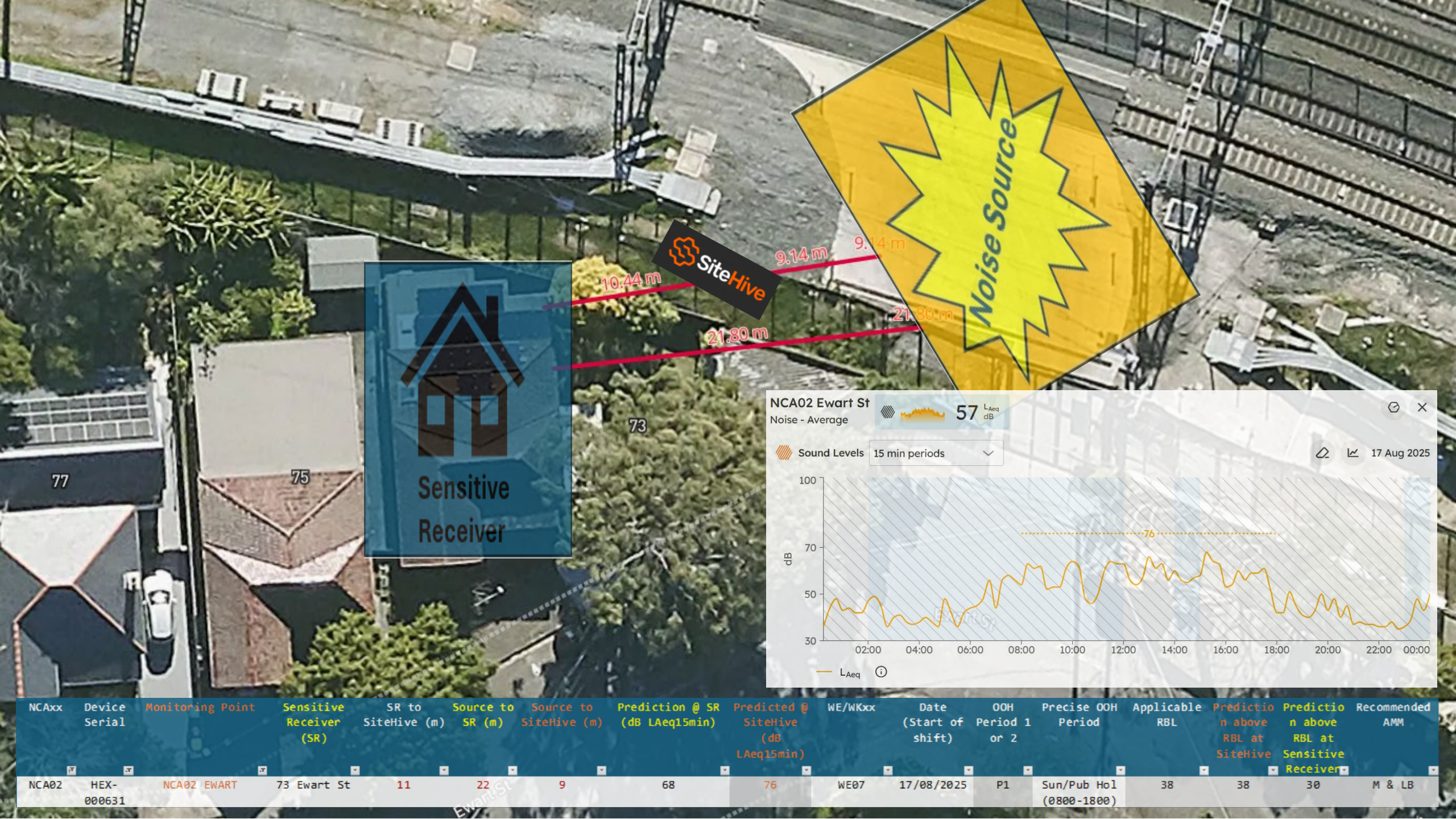
WE07 works noise monitoring was carried out at the following locations along the project corridor.

NCAxx	Device Serial	Monitoring Point	Sensitive Receiver (SR)	SR to SiteHive (m)	Source to SR (m)	Source to SiteHive (m)	Prediction @ SR (dB LAeq15min)	Predicted @ SiteHive (dB LAeq15min)	WE/WKxx	Date (Start of shift)	OOH Period 1 or 2	Precise OOH Period	Applicable RBL	Prediction above RBL at SiteHive	Prediction above RBL at Sensitive Receiver	Recommended AMM
NCA01	HEX-000421	NCA01 MA STATION	359 Illawarra Road	54	24	37	71	67	WE07	17/08/2025	P1	Sun/Pub Hol (0800-1800)	38	29	33	RO

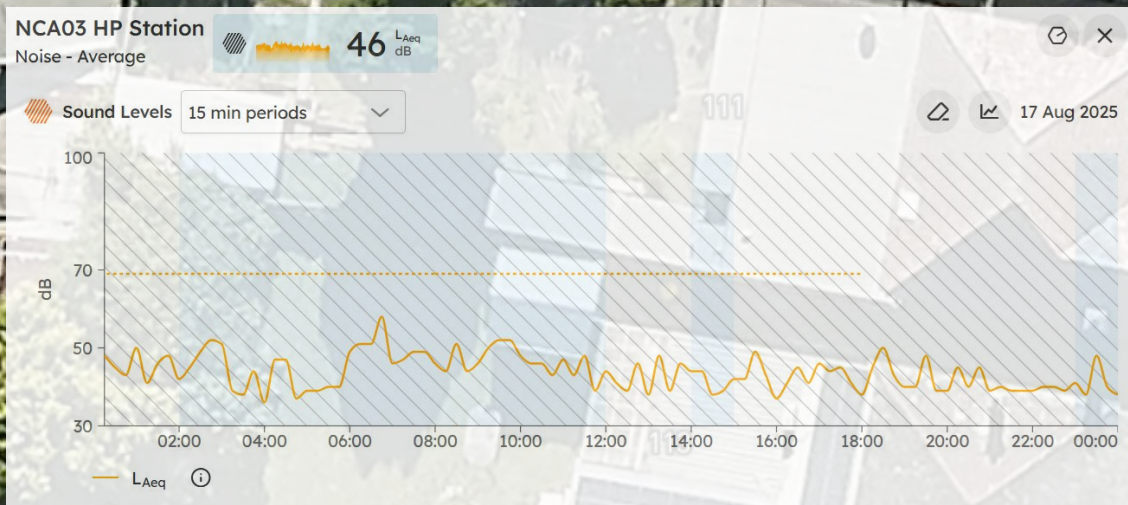
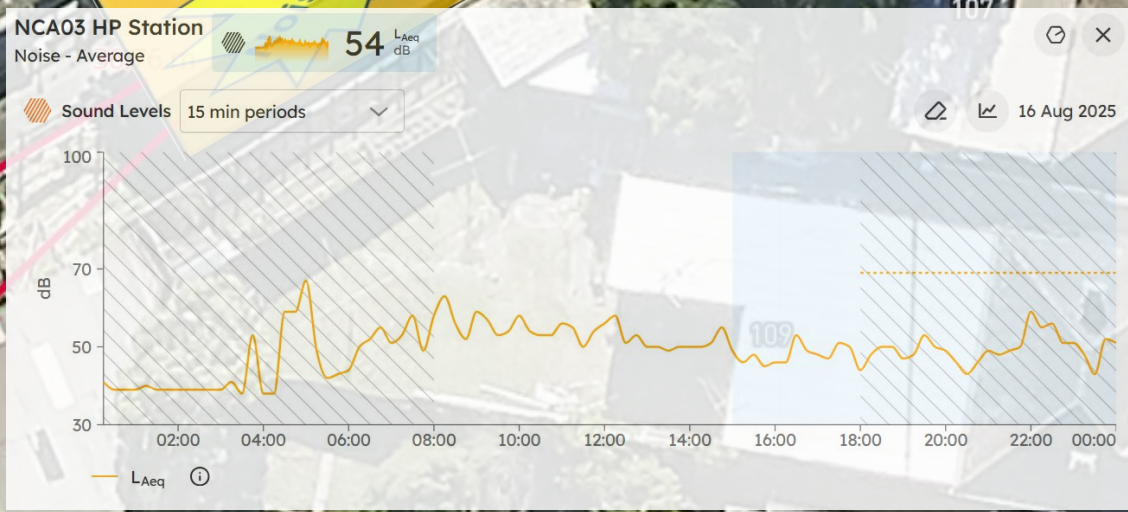
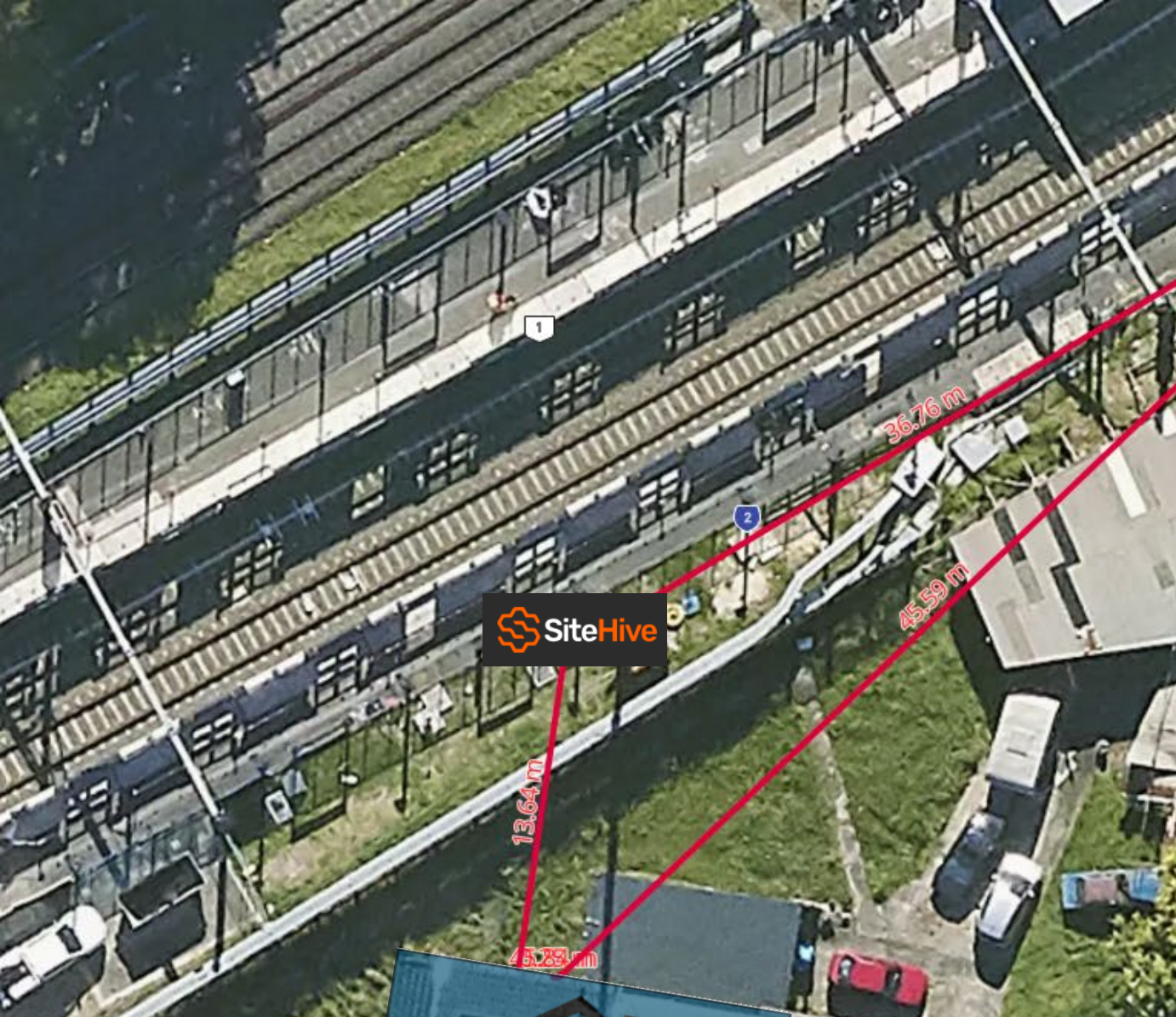


NCAxx	Device Serial	Monitoring Point	Sensitive Receiver (SR)	SR to SiteHive (m)	Source to SR (m)	SiteHive (m)	Prediction @ SR (dB LAeq15min)	Predicted @ SiteHive (dB LAeq15min)	WE/WKxx	Date (Start of shift)	OOH Period 1 or 2	Precise OOH Period	Applicable RBL	Prediction above RBL at SiteHive	Prediction above RBL at Sensitive Receiver	Recommended AMM	Note
NCA02	HEX-000465	NCA02 DH STATION	57A Ewart St	29	29	1	48	77	WE07	17/08/2025	P1	Sun/Pub Ho1 (0800-1800)	38	39	10	nil	Prediction based on SiteHive Location- No change to Prediction at SR
NCA02	HEX-000465	NCA02 DH STATION	57A Ewart St	23	29	8	48	59	WE07	17/08/2025	P1	Sun/Pub Ho1 (0800-1800)	38	21	10	nil	Prediction based on SiteHive Location- No change to Prediction at SR





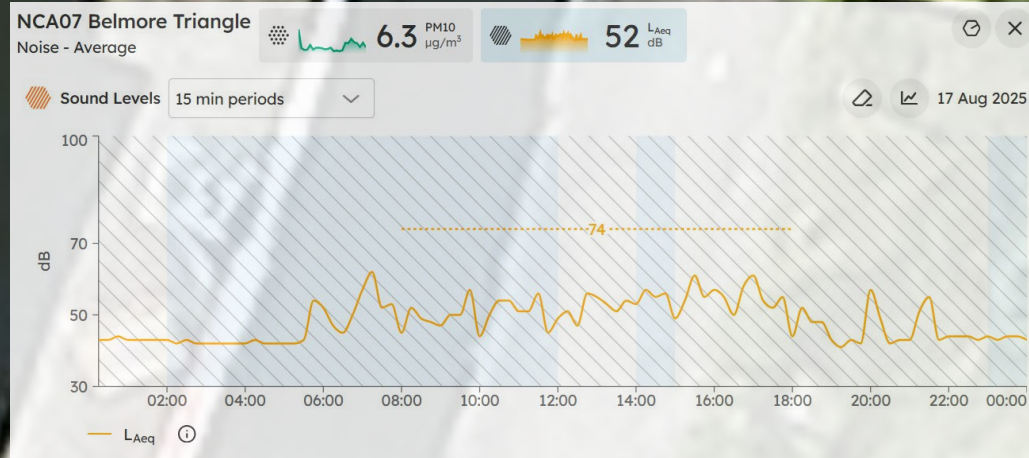
NCAxx	Device Serial	Monitoring Point	Sensitive Receiver (SR)	SR to SiteHive (m)	Source to SR (m)	Source to SiteHive (m)	Prediction @ SR (dB $L_{Aeq}15min$)	Predicted @ SiteHive (dB $L_{Aeq}15min$)	WE/WKxx	Date (Start of shift)	OOH Period 1 or 2	Precise OOH Period	Applicable RBL	Prediction n above RBL at SiteHive	Prediction n above RBL at Sensitive Receiver	Recommended AMM
NCA02	HEX-000631	NCA02 EWART	73 Ewart St	11	22	9	68	76	WE07	17/08/2025	P1	Sun/Pub Hol (0800-1800)	38	38	30	M & LB



NCAxx	Device Serial	Monitoring Point	Sensitive Receiver (SR)	SR to SiteHive (m)	Source to SR (m)	Source to SiteHive (m)	Prediction @ SR (dB LAeq15min)	Predicted @ SiteHive (dB LAeq15min)	WE/WKxx	Date (Start of shift)	OOH Period 1 or 2	Precise OOH Period	Applicable RBL	Prediction n above RBL at SiteHive	Prediction n above RBL at Sensitive Receiver	Recommended AMM	Note
NCA03	HEX-000760	NCA03 HP STATION	3A Commons St	14	46	37	67	69	WE07	16/08/2025	P2	Sat (2200-0800)	34	35	33	RO, AA	46 Floss- 32dB
NCA03	HEX-000760	NCA03 HP STATION	3A Commons St	14	46	37	67	69	WE07	17/08/2025	P1	Sun/Pub Hol (0800-1800)	38	31	29	M & LB	

NCAxx	Device Serial	Monitoring Point	Sensitive Receiver (SR)	SR to SiteHive (m)	Source to SR (m)	Source to SiteHive (m)	Prediction @ SR (dB LAeq15min)	Predicted @ SiteHive (dB LAeq15min)	WE/WKxx	Date (Start of shift)	OOH Period 1 or 2	Precise OOH Period	Applicable RBL	Prediction above RBL at SiteHive	Prediction above RBL at Sensitive Receiver	Recommended AMM
NCA06	HEX-000743	NCA06 CP STATION	13-15 Anglo Rd	9	19	9	67	73	WE07	17/08/2025	P1	Sun/Pub Hol (0800-1800)	45	28	22	M & LB





NCAxx	Device Serial	Monitoring Point	Sensitive Receiver (SR)	SR to SiteHive (m)	Source to SR (m)	Source to SiteHive (m)	Prediction @ SR (dB LAeq15min)	Predicted @ SiteHive (dB LAeq15min)	WE/WKxx	Date (Start of shift)	OOH Period 1 or 2	Precise OOH Period	Applicable RBL	Prediction n above RBL at SiteHive	Prediction n above RBL at Sensitive Receiver	Recommended AMM
NCA07	HEX-000531	NCA07 BELMORE TRIANGLE	1 Hall St	8	11	3	63	74	WE07	17/08/2025	P1	Sun/Pub Hol (0800-1800)	41	33	22	M & LB

NCAxx	Device Serial	Monitoring Point	Sensitive Receiver (SR)	SR to SiteHive (m)	Source to SR (m)	Source to SiteHive (m)	Prediction @ SR (dB LAeq15min)	Predicted @ SiteHive (dB LAeq15min)	WE/WKxx	Date (Start of shift)	OOH Period 1 or 2	Precise OOH Period	Applicable RBL	Prediction above RBL at SiteHive	Prediction above RBL at Sensitive Receiver	Recommended AMM
NCA07	HEX-000630	NCA07 BE STATION	1 Acacia St	28	47	18	51	59	WE07	17/08/2025	P1	Sun/Pub Hol (0800-1800)	41	18	10	nil



NCA07 BE Station

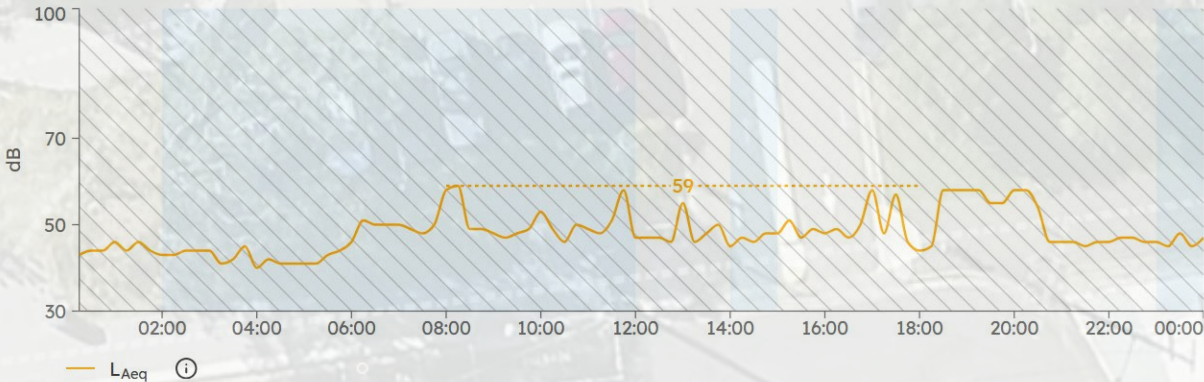
Noise - Average

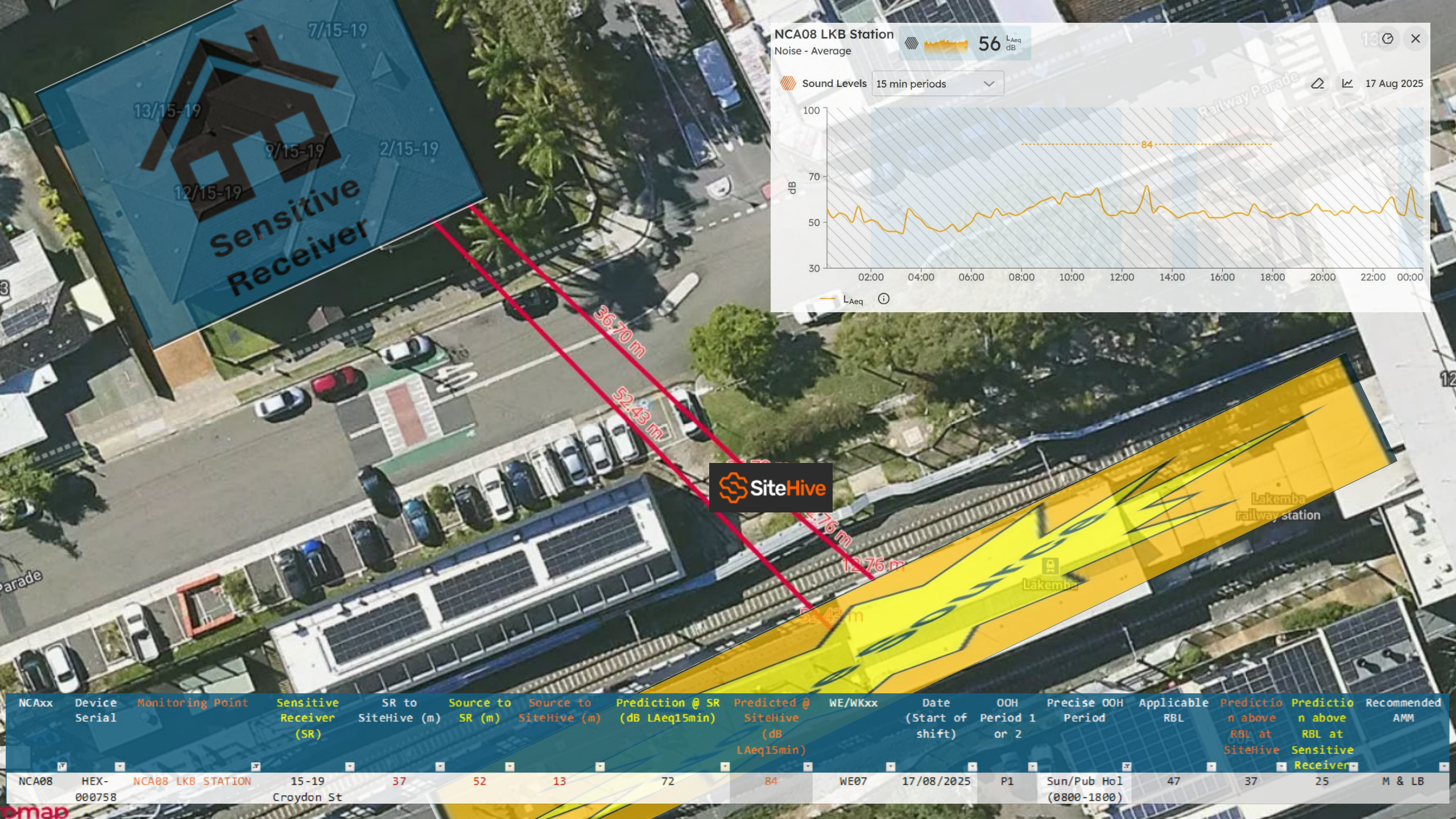
No data

51 dB LAeq

Sound Levels 15 min periods

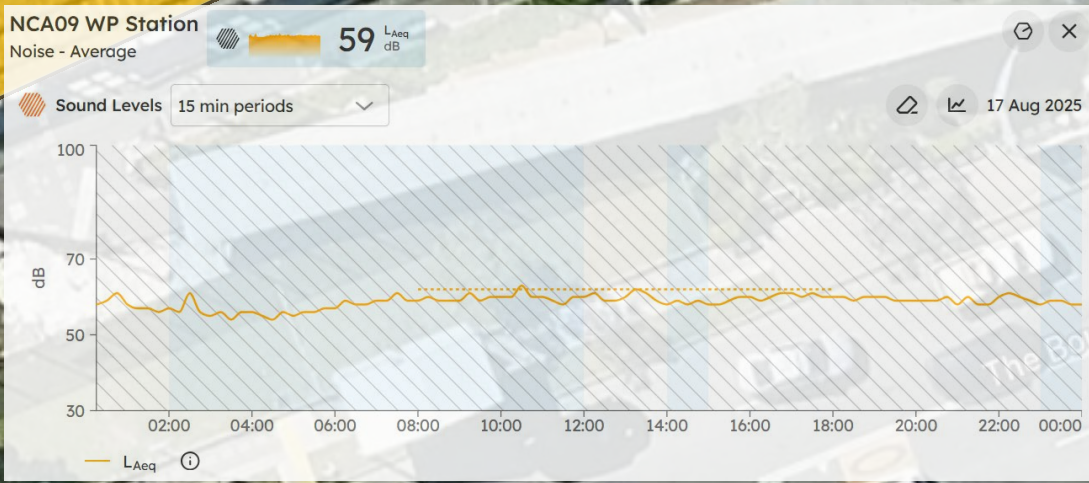
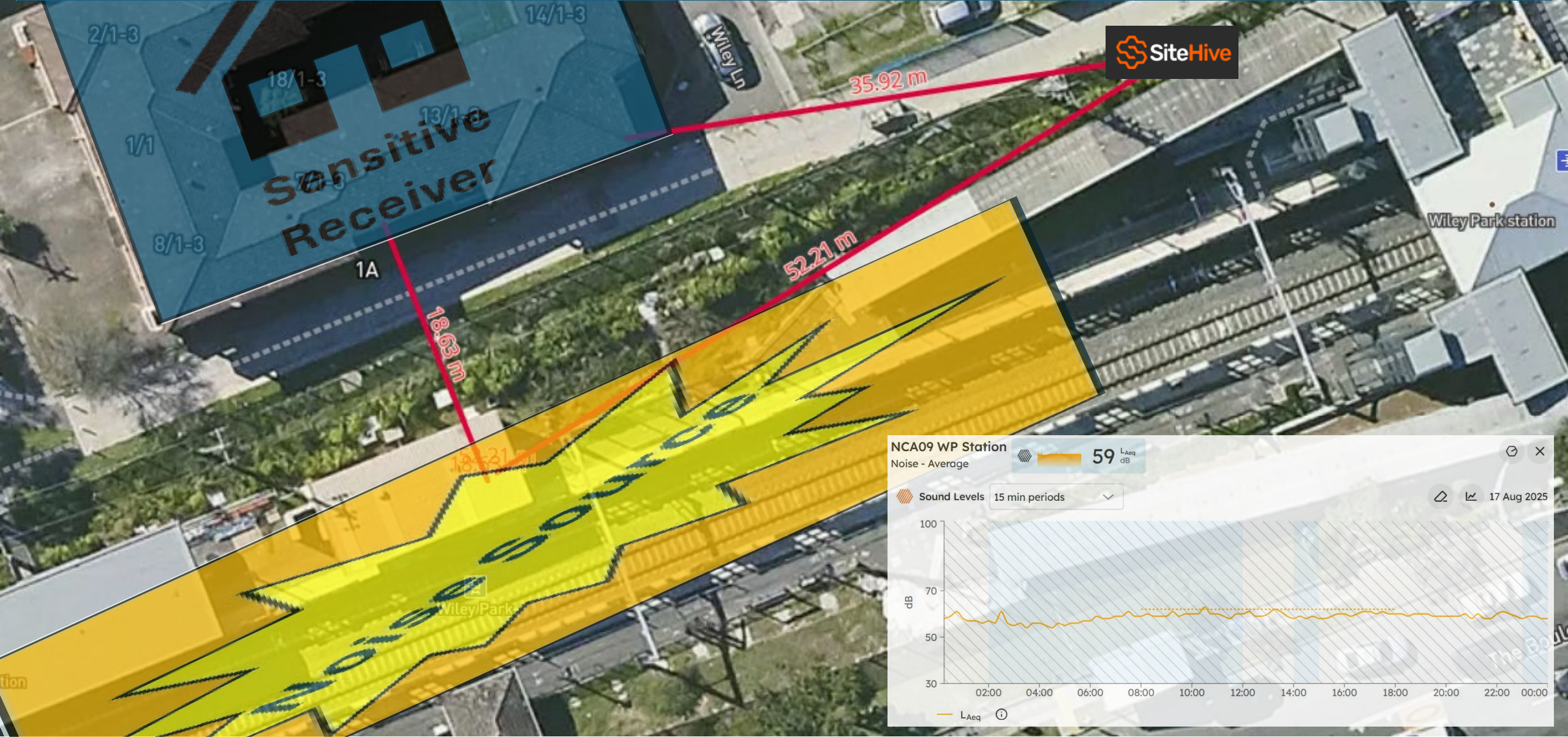
17 Aug 2025





NCAxx	Device Serial	Monitoring Point	Sensitive Receiver (SR)	SR to SiteHive (m)	Source to SR (m)	Source to SiteHive (m)	Prediction @ SR (dB LAeq15min)	Predicted @ SiteHive (dB LAeq15min)	WE/WKxx	Date (Start of shift)	OOH Period 1 or 2	Precise OOH Period	Applicable RBL	Prediction n above RBL at SiteHive	Prediction n above RBL at Sensitive Receiver	Recommended AMM
NCA08	HEX-000758	NCA08 LKB STATION	15-19 Croydon St	37	52	13	72	84	WE07	17/08/2025	P1	Sun/Pub Hol (0800-1800)	47	37	25	M & LB

NCAxx	Device Serial	Monitoring Point	Sensitive Receiver (SR)	SR to SiteHive (m)	Source to SR (m)	Source to SiteHive (m)	Prediction @ SR (dB LAeq15min)	Predicted @ SiteHive (dB LAeq15min)	WE/WKxx	Date (Start of shift)	OOH Period 1 or 2	Precise OOH Period	Applicable RBL	Prediction above RBL at SiteHive	Prediction above RBL at Sensitive Receiver	Recommended AMM
NCA09	HEX-000558	NCA09 WP STATION	1-3 Shadforth Street	36	19	52	71	62	WE07	17/08/2025	P1	Sun/Pub Ho1 (0800-1800)	44	18	27	M & LB



A. Details of any exceedances of predicted noise levels;

There were no exceedance due to works occurring.

B. Details of the noise and vibration mitigation measures that were implemented as specified in the relevant Construction Noise and Vibration Impact Assessment for the worksite

The mitigation measures that were implemented included:

- Planning process reduce OOH in more sensitive periods where possible (mostly Day OOH)
- All workers briefed at prestart of OOHW taking place.
- Works occur within the hours agreed in the OOHW only.
- All plant positioned so that the exhaust (or noisiest side of the plant) is pointing away from sensitive receivers, where possible.
- The engine of any plant is to be turned off when not in use
- Workers are not to shout, slam doors, drop objects or make any other unnecessary noise
- Workers are to be mindful of residents when mobilizing and demobilizing

Additional mitigation measures in accordance with the Sydney Metro Construction Noise and Vibration Strategy were implemented which included:

- Letter box drops
- Continuous monitoring
- Respite for receivers with potential noise exceedance of over 20dB and alternative accommodation offered for receivers with potential noise exceedance of over 30dB.

C. The justification required under L5.5 for the carrying out of works outside of standard construction hours in L5.1.

The works carried out on WK06 (13th August 2025) could only be safely conducted during road occupancy in accordance with Condition L5.6.

The works carried out on WE07 (16/17th August 2025) could only be safely conducted during a rail possession due to works occurring within the rail corridor/danger zone. Works were completed in accordance with EPL Condition L5.5 Local Possession (as dynamic testing is occurring during the week). Carrying out the construction activities during standard construction hours (specified in L5.1) would cause unacceptable risks to construction personnel safety; rail passenger and railways personnel safety and railway network operational reliability.

All feasible and reasonable at-source noise controls were implemented in accordance with Condition L4.1, and noise mitigation measures were implemented in accordance with JHLORJV's CNVIS and Interim Construction Noise Guideline (DECC 2009).

R4.4 (b) The validation report must be submitted to the EPA fortnightly from the commencement of the works permitted by L5.5 & L5.6 by no later than 2 business days from the end of each fortnight.

This R4.4 Validation report has been submitted to EPA by no later than two business days after the end of the fortnight.

Attachment 1 – Community Notification

Community Notifications were provided to residents of Sydenham, Marrickville, Dulwich Hill, Hurlstone Park, Canterbury, Campsie, Belmore, Lakemba, Wiley Park, Punchbowl and Bankstown.

Community notifications for works undertaken at the previously stated locations available upon request.

EPL 21147

R4.4 Validation Report

SWM3 2025 WE09

R4.4 Sydney Metro Possession (WE09, 31st August 2025)

Document and Revision History

Document Details	
Title	R4.4 Validation Report
Client	Sydney Metro City & Southwest
JHLOR JV contract no.	K44

Revisions

Revision	Date	Description	Prepared by	Reviewed by
01	02/09/2025	Prepared for R4.4	Ted Zhang	Lucas Dobrolot

Management reviews

Review date	Details	Reviewed by

Controlled: NO Copy no.: Uncontrolled: YES

Table of Contents

Introduction	3
R4.4(a) For activities permitted under Condition L5.5 & L5.6, a validation report must be submitted to the EPA that includes the following detail:	3
1. Confirmation that the equipment used to undertake the works was as specified in the relevant Construction Noise and Vibration Impact Assessment for the worksite	3
2. A copy of the community notification required under Condition L5.11	4
3. Noise monitoring as required by L5.7(d).....	4
A. Details of any exceedances of predicted noise levels;	5
B. Details of the noise and vibration mitigation measures that were implemented as specified in the relevant Construction Noise and Vibration Impact Assessment for the worksite.....	5
C. The justification required under L5.5 for the carrying out of works outside of standard construction hours in L5.1	5
R4.4 (b) The validation report must be submitted to the EPA fortnightly from the commencement of the works permitted by L5.5 & L5.6 by no later than 2 business days from the end of each fortnight.	5
Attachment 1 – Community Notification.....	6

Introduction

This validation report has been prepared in accordance with EPL 21147 Condition R4.4 for out-of-hour works carried out on 31st August 0800 to 1800 in Weekend 07 (WE07) across the corridor and stations, noise activities:

Low Impact Works (L5.1)

- Site access 0600 to 0800 Saturday & Sunday (pre-start, vehicle movement, set up, some low impact work)
- Vegetation removal and maintenance
- Track & OHW Works investigation;
- Station Works (refresh);
- Protection Screen Door (PSD) & Mechanical Gap Filler (MGF) Testing Works
- Testing and commissioning equipment

Possession Works (L5.5)

- Asphaltting
- Vegetation Clearing
- Anti-throw Screen installation
- Industrial painting
- Bridge Inspection
- Tiling & Glazing installation

Occurred during possession on Sydney Metro's track (between Sydenham Station to Bankstown Station). Works were carried out under Condition L5.5 - Local Possessions.

Refer to **Attachment 1** for monitoring results.

R4.4(a) For activities permitted under Condition L5.5 & L5.6, a validation report must be submitted to the EPA that includes the following detail:

1. **Confirmation that the equipment used to undertake the works was as specified in the relevant Construction Noise and Vibration Impact Assessment for the worksite**

The assessment prepared for the works included modelling for the following plant and equipment:

- Track Works/OHW
 - Powered hand tool
 - Hi-rail Excavator
 - Sennebogen
 - Track Welding Kit
 - Track Profile Grinder
 - Hi rail EWP
- Station Works
 - Powered hand tool
 - Hi-rail EWP
 - Excavators with hammer attachments
 - Hydremas/Mini hydremas
 - Generators
- PSD & MGF Testing and commissioning works
 - Hand tool

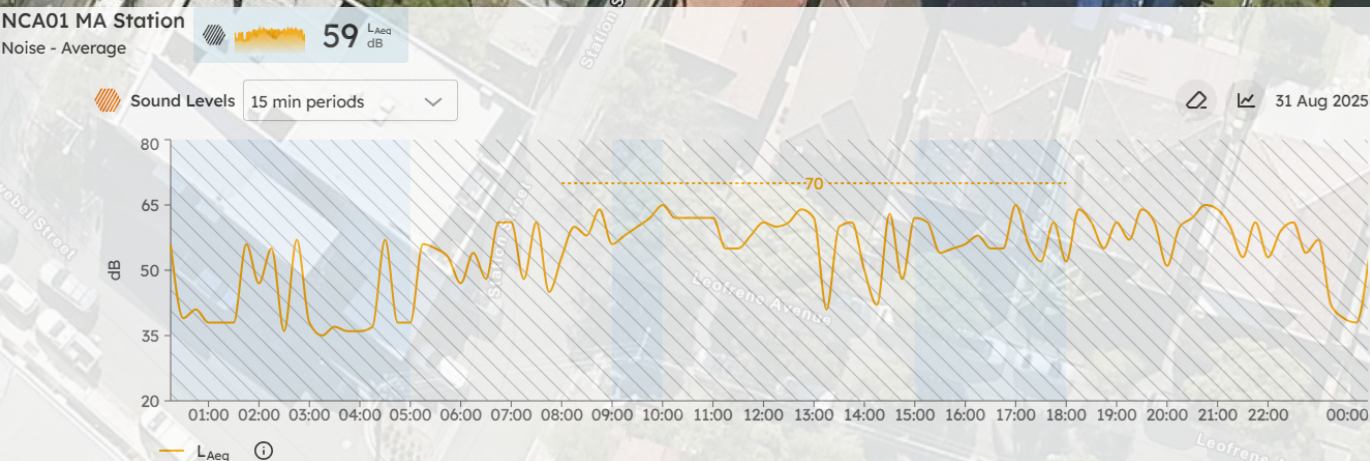
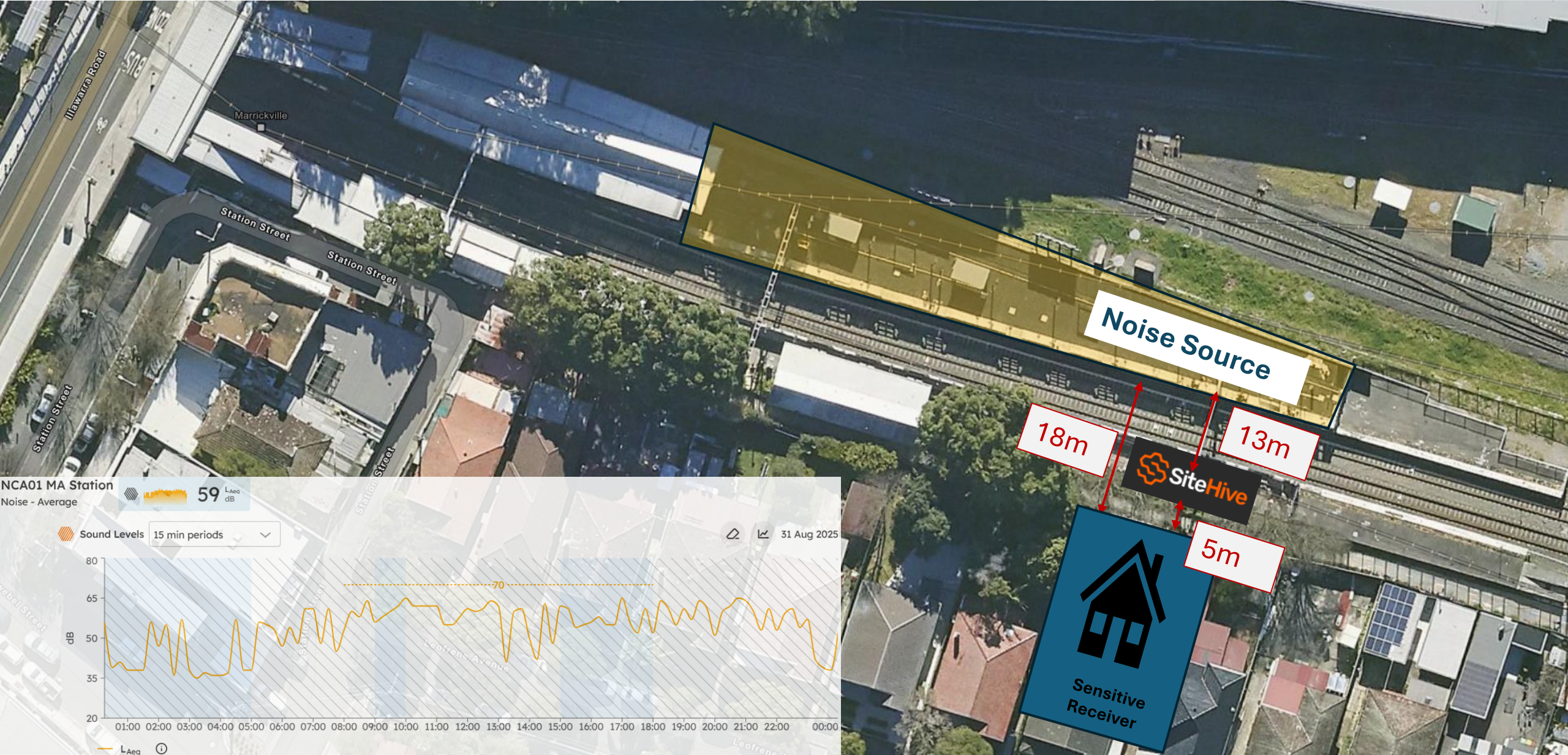
2. A copy of the community notification required under Condition L5.11

A copy of the community notification required under Condition L5.11 is appended as **Attachment 2**.

3. Noise monitoring as required by L5.7(d)

WE09 works noise monitoring was carried out at the following locations along the project corridor.

Monitoring Point	Sensitive Receiver (SR)	SR to SiteHive (m)	Source to SR (m)	Source to SiteHive (m)	Prediction @ SR (dB LAeq15min)	Predicted @ SiteHive (dB LAeq15min)	WE/WKxx	Date (Start of shift)	OOH Period 1 or 2	Precise OOH Period	Applicable RBL	Prediction above RBL at SiteHive	Prediction above RBL at Sensitive Receiver	Recommended AMM
NCA01 MA STATION	15 Leofrene Avenue	5	18	13	67	70	WE09	31/08/2025	P1	Sun/Pub Hol (0800-1800)	38	32	29	M & LB



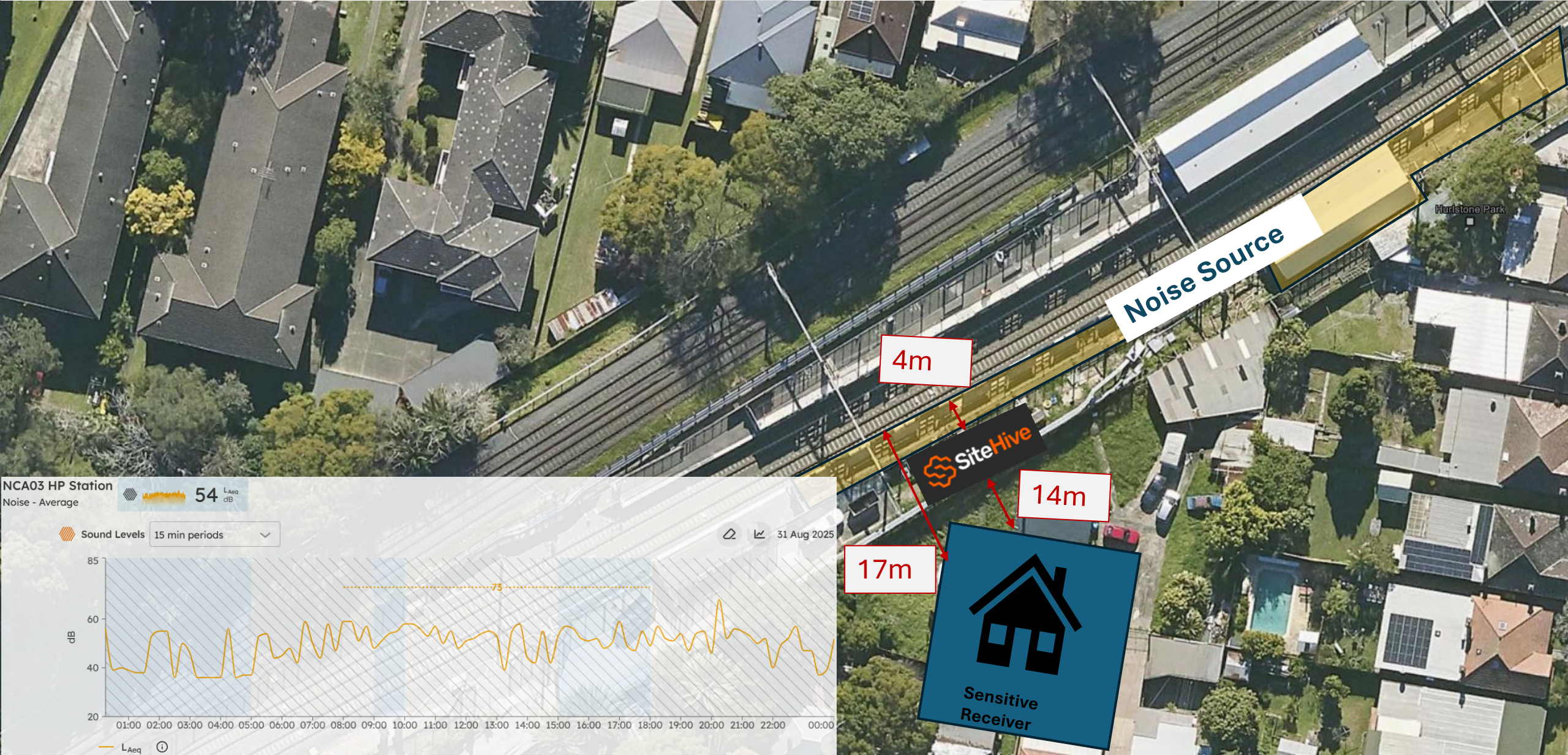
Monitoring Point	Sensitive Receiver (SR)	SR to SiteHive (m)	Source to SR (m)	Source to SiteHive (m)	Prediction @ SR (dB LAeq15min)	Predicted @ SiteHive (dB LAeq15min)	WE/WKxx	Date (Start of shift)	OOH Period 1 or 2	Precise OOH Period	Applicable RBL	Prediction above RBL at SiteHive	Prediction above RBL at Sensitive Receiver	Recommended AMM
NCA02 DH STATION	51A Ewart Lane	20	32	12	62	71	WE09	31/08/2025	P1	Sun/Pub Ho1 (0800-1800)	38	33	24	M & LB



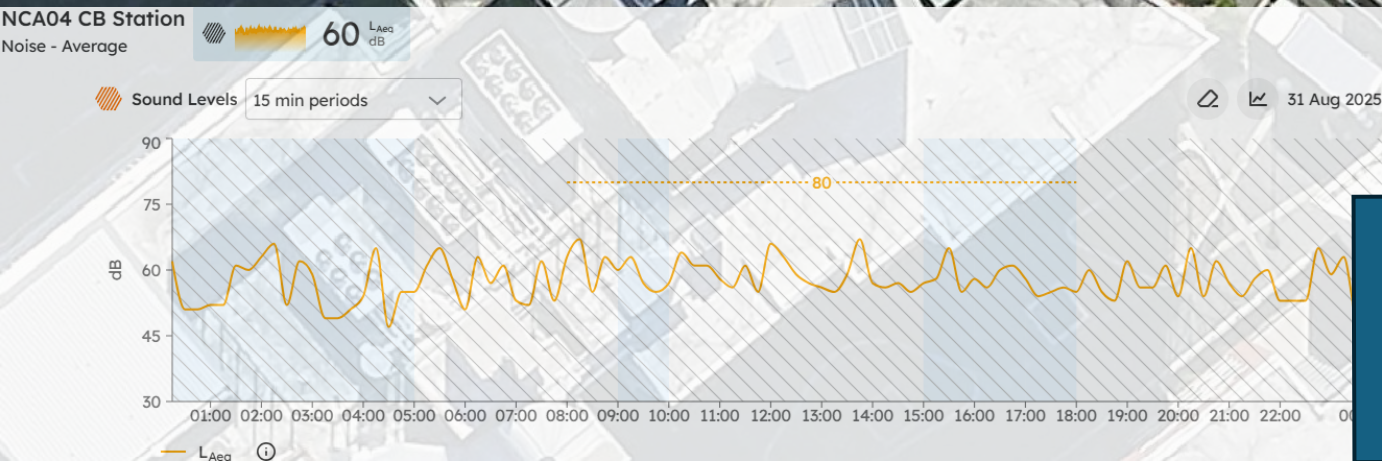
Monitoring Point	Sensitive Receiver (SR)	SR to SiteHive (m)	Source to SR (m)	Source to SiteHive (m)	Prediction @ SR (dB LAeq15min)	Predicted @ SiteHive (dB LAeq15min)	WE/WKxx	Date (Start of shift)	OOH Period 1 or 2	Precise OOH Period	Applicable RBL	Prediction above RBL at SiteHive	Prediction above RBL at Sensitive Receiver	Recommended AMM
NCA02 EWART	73 Ewart Street	11	22	9	73	81	WE09	31/08/2025	P1	Sun/Pub Hol (0800-1800)	38	43	35	RO



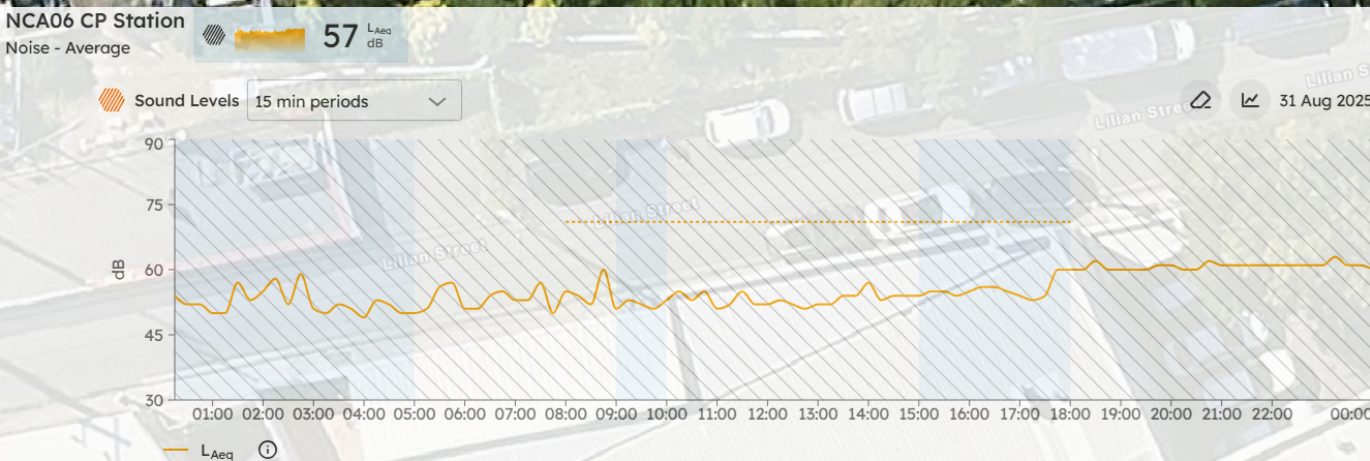
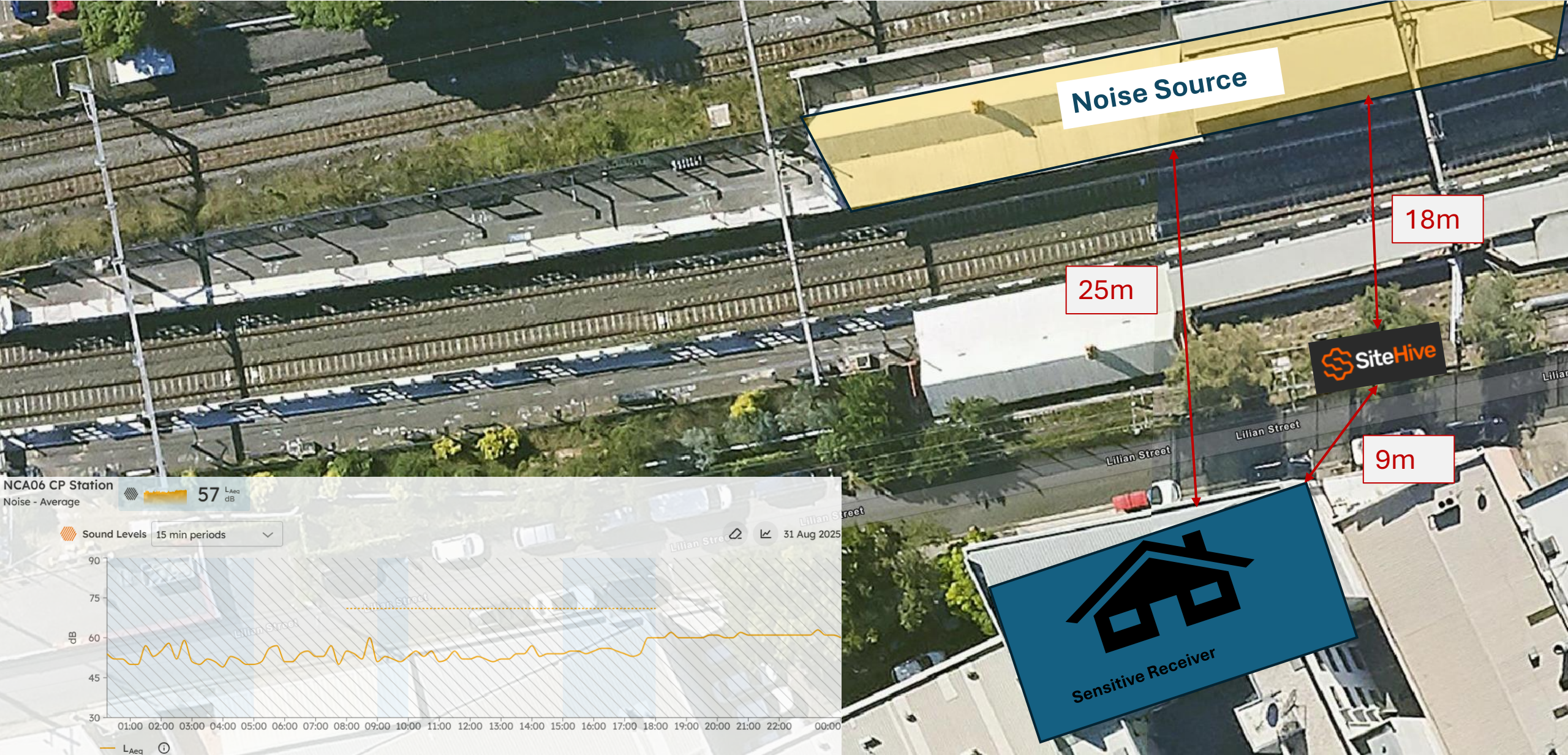
Monitoring Point	Sensitive Receiver (SR)	SR to SiteHive (m)	Source to SR (m)	Source to SiteHive (m)	Prediction @ SR (dB LAeq15min)	Predicted @ SiteHive (dB LAeq15min)	WE/WKxx	Date (Start of shift)	OOH Period 1 or 2	Precise OOH Period	Applicable RBL	Prediction above RBL at SiteHive	Prediction above RBL at Sensitive Receiver	Recommended AMM
NCA03 HP STATION	3A Commons Street	14	17	4	60	73	WE09	31/08/2025	P1	Sun/Pub Hol (0800-1800)	38	35	22	M & LB



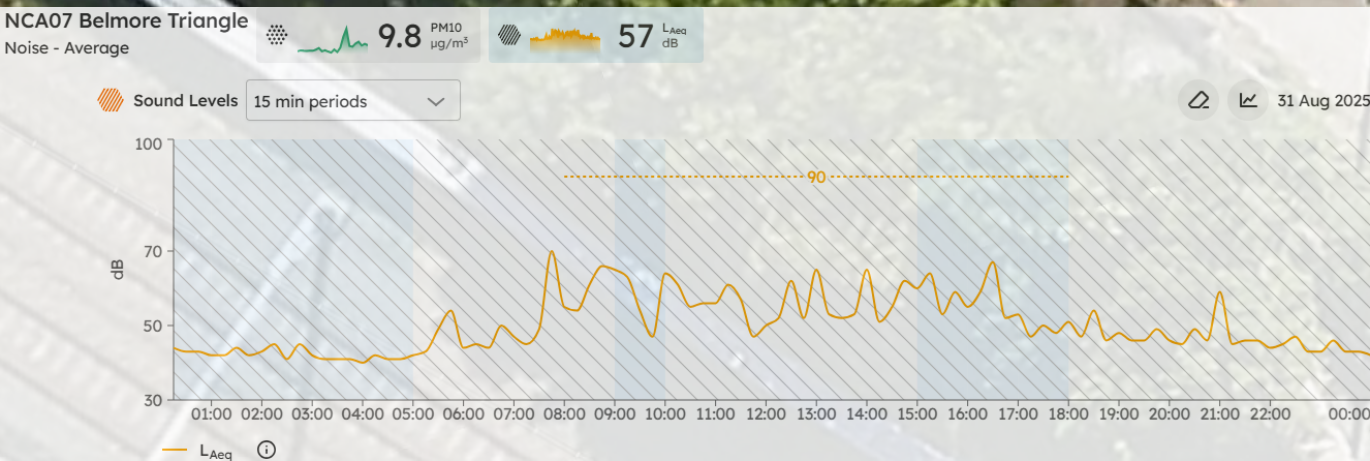
Monitoring Point	Sensitive Receiver (SR)	SR to SiteHive (m)	Source to SR (m)	Source to SiteHive (m)	Prediction @ SR (dB LAeq15min)	Predicted @ SiteHive (dB LAeq15min)	WE/WKxx	Date (Start of shift)	OOH Period 1 or 2	Precise OOH Period	Applicable RBL	Prediction above RBL at SiteHive	Prediction above RBL at Sensitive Receiver	Recommended AMM
NCA04 CB STATION	2A Charles Street	10	29	18	76	80	WE09	31/08/2025	P1	Sun/Pub Hol (0800-1800)	40	40	36	R0



Monitoring Point	Sensitive Receiver (SR)	SR to SiteHive (m)	Source to SR (m)	Source to SiteHive (m)	Prediction @ SR (dB LAeq15min)	Predicted @ SiteHive (dB LAeq15min)	WE/WKxx	Date (Start of shift)	OOH Period 1 or 2	Precise OOH Period	Applicable RBL	Prediction above RBL at SiteHive	Prediction above RBL at Sensitive Receiver	Recommended AMM
NCA06 CP STATION	13-15 Anglo Road	9	25	18	68	71	WE09	31/08/2025	P1	Sun/Pub Hol (0800-1800)	45	26	23	M & LB



Monitoring Point	Sensitive Receiver (SR)	SR to SiteHive (m)	Source to SR (m)	Source to SiteHive (m)	Prediction @ SR (dB LAeq15min)	Predicted @ SiteHive (dB LAeq15min)	WE/WKxx	Date (Start of shift)	OOH Period 1 or 2	Precise OOH Period	Applicable RBL	Prediction above RBL at SiteHive	Prediction above RBL at Sensitive Receiver	Recommended AMM
NCA07 BELMORE TRIANGLE	1 Hall Street	8	11	3	79	90	WE09	31/08/2025	P1	Sun/Pub Hol (0800-1800)	41	49	38	RO



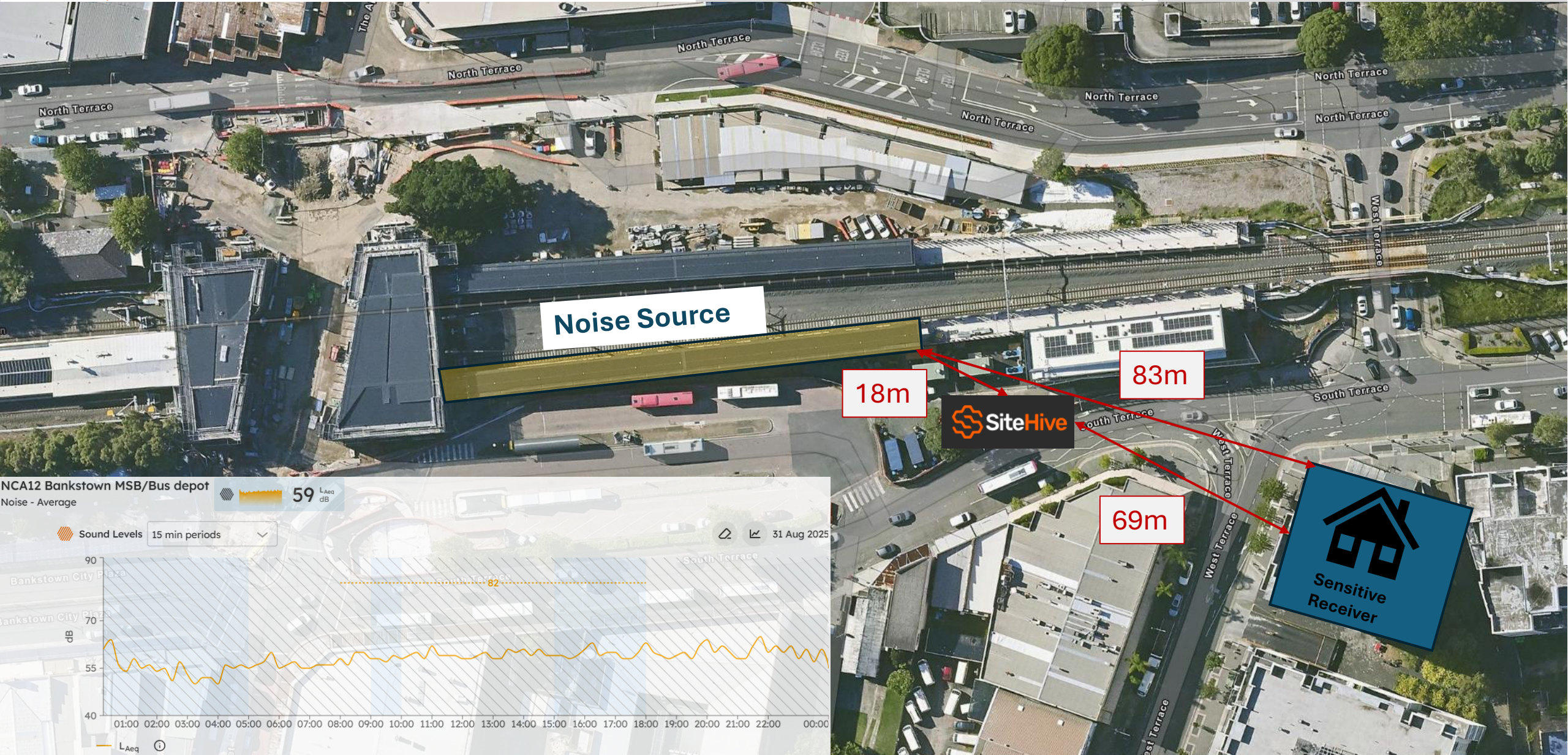
Monitoring Point	Sensitive Receiver (SR)	SR to SiteHive (m)	Source to SR (m)	Source to SiteHive (m)	Prediction @ SR (dB LAeq15min)	Predicted @ SiteHive (dB LAeq15min)	WE/WKxx	Date (Start of shift)	OOH Period 1 or 2	Precise OOH Period	Applicable RBL	Prediction above RBL at SiteHive	Prediction above RBL at Sensitive Receiver	Recommended AMM
NCA08 LKB STATION	15-19 Croydon	47	84	43	55	61	WE09	31/08/2025	P1	Sun/Pub Hol (0800-1800)	47	14	8	nil



Monitoring Point	Sensitive Receiver (SR)	SR to SiteHive (m)	Source to SR (m)	Source to SiteHive (m)	Prediction @ SR (dB LAeq15min)	Predicted @ SiteHive (dB LAeq15min)	WE/WKxx	Date (Start of shift)	OOH Period 1 or 2	Precise OOH Period	Applicable RBL	Prediction above RBL at SiteHive	Prediction above RBL at Sensitive Receiver	Recommended AMM
NCA10 PB STATION	41 Urunga Parade	100	110	16	52	69	WE07	17/08/2025	P1	Sun/Pub Hol (0800-1800)	47	22	5	nil



Monitoring Point	Sensitive Receiver (SR)	SR to SiteHive (m)	Source to SR (m)	Source to SiteHive (m)	Prediction @ SR (dB LAeq15min)	Predicted @ SiteHive (dB LAeq15min)	WE/WKxx	Date (Start of shift)	OOH Period 1 or 2	Precise OOH Period	Applicable RBL	Prediction above RBL at SiteHive	Prediction above RBL at Sensitive Receiver	Recommended AMM
NCA12 Bankstown MSB/Bus depot	2 West Terrace	69	83	18	69	82	WE09	31/08/2025	P1	Sun/Pub Hol (0800-1800)	54	28	15	LB



A. Details of any exceedances of predicted noise levels;

There were no exceedance due to works occurring.

B. Details of the noise and vibration mitigation measures that were implemented as specified in the relevant Construction Noise and Vibration Impact Assessment for the worksite

The mitigation measures that were implemented included:

- Planning process reduce OOH in more sensitive periods where possible (mostly Day OOH)
- All workers briefed at prestart of OOHW taking place.
- Works occur within the hours agreed in the OOHW only.
- All plant positioned so that the exhaust (or noisiest side of the plant) is pointing away from sensitive receivers, where possible.
- The engine of any plant is to be turned off when not in use
- Workers are not to shout, slam doors, drop objects or make any other unnecessary noise
- Workers are to be mindful of residents when mobilizing and demobilizing

Additional mitigation measures in accordance with the Sydney Metro Construction Noise and Vibration Strategy were implemented which included:

- Letter box drops
- Continuous monitoring
- Respite for receivers with potential noise exceedance of over 20dB and alternative accommodation offered for receivers with potential noise exceedance of over 30dB.

C. The justification required under L5.5 for the carrying out of works outside of standard construction hours in L5.1.

The works carried out on WE09 (31st August 2025) could only be safely conducted during a rail possession due to works occurring within the rail corridor/danger zone. Works were completed in accordance with EPL Condition L5.5 Local Possession (as dynamic testing is occurring during the week). Carrying out the construction activities during standard construction hours (specified in L5.1) would cause unacceptable risks to construction personnel safety; rail passenger and railways personnel safety and railway network operational reliability.

All feasible and reasonable at-source noise controls were implemented in accordance with Condition L4.1, and noise mitigation measures were implemented in accordance with JHLORJV's CNVIS and Interim Construction Noise Guideline (DECC 2009).

R4.4 (b) The validation report must be submitted to the EPA fortnightly from the commencement of the works permitted by L5.5 & L5.6 by no later than 2 business days from the end of each fortnight.

This R4.4 Validation report has been submitted to EPA by no later than two business days after the end of the fortnight.

Attachment 1 – Community Notification

Community Notifications were provided to residents of Sydenham, Marrickville, Dulwich Hill, Hurlstone Park, Canterbury, Campsie, Belmore, Lakemba, Wiley Park, Punchbowl and Bankstown.

Community notifications for works undertaken at the previously stated locations available upon request.